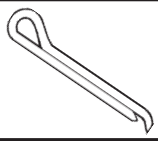
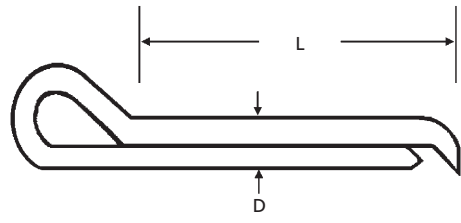


# COTTER PINS

785-392-3017 FAX 785.392.2845

REVISED 06-04  
www.huyett.com

**POUND INTO PLACE!**



## HAMMERLOCK

### MANUFACTURER CROSS-REFERENCE

ITW/Bee-Leitzke	26	Pivot Point	COT
Western Wire		Hobbs	

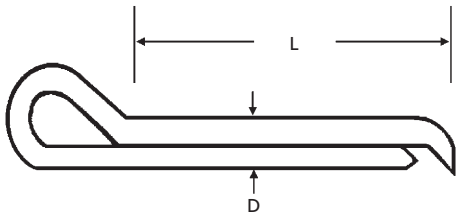
CPHZ	Nominal (D)	Length (L)	WEIGHT	MATERIAL	CPHZ	Nominal (D)	Length (L)	WEIGHT	MATERIAL
	DIAMETER	LENGTH	Lbs. per 100 Pieces			DIAMETER	LENGTH	Lbs. per 100 Pieces	
-046-0250	3/64	1/4	0.04	Zinc Clear	-093-1750	3/32	1-3/4	0.35	Zinc Clear
-046-0312		5/16	0.04		-093-2000		2	0.40	
-046-0375		3/8	0.04		-093-2250		2-1/4	0.45	
-046-0437		7/16	0.04		-093-2500		2-1/2	0.50	
-046-0500		1/2	0.04		-093-3000		3	0.60	
-046-0625		5/8	0.06		-093-3500		3-1/2	0.75	
-046-0750		3/4	0.06		-093-4000		4	0.77	
-046-0875		7/8	0.08		-109-0500		1/2	0.27	
-046-1000		1	0.08		-109-0625		5/8	0.33	
-046-1250		1-1/4	0.10		-109-0750		3/4	0.33	
-046-1500	1-1/2	0.11	-109-0875	7/8	0.43				
-062-0250	1/16	1/4	0.06	-109-1000	1	0.43			
-062-0500		1/2	0.06	-109-1250	1-1/4	0.51			
-062-0750		3/4	0.08	-109-1500	1-1/2	0.56			
-062-1000		1	0.10	-109-1750	1-3/4	0.66			
-062-1250		1-1/4	0.11	-109-2000	2	0.74			
-062-1500		1-1/2	0.14	-109-2250	2-1/4	0.83			
-062-1750		1-3/4	0.15	-109-2500	2-1/2	0.89			
-062-2000		2	0.18	-109-3000	3	1.05			
-062-2250		2-1/4	0.22	-109-3500	3-1/2	1.25			
-062-2500		2-1/2	0.26	-109-4000	4	1.45			
-062-3000	3	0.28	-125-0500	1/2	0.27				
-078-0500	5/64	1/2	0.13	-125-0625	5/8	0.33			
-078-0625		5/8	0.17	-125-0750	3/4	0.33			
-078-0750		3/4	0.17	-125-0875	7/8	0.43			
-078-0875		7/8	0.22	-125-1000	1	0.43			
-078-1000		1	0.22	-125-1250	1-1/4	0.51			
-078-1250		1-1/4	0.26	-125-1500	1-1/2	0.56			
-078-1500		1-1/2	0.31	-125-1750	1-3/4	0.66			
-078-1750		1-3/4	0.35	-125-2000	2	0.74			
-078-2000		2	0.40	-125-2250	2-1/4	0.83			
-078-2250		2-1/4	0.45	-125-2500	2-1/2	0.89			
-078-2500	2-1/2	0.50	-125-3000	3	1.05				
-078-3000	3	0.60	-125-3500	3-1/2	1.25				
-078-3500	3-1/2	0.75	-125-4000	4	1.45				
-078-4000	4	0.77	-140-0750	3/4	0.53				
-093-0500	3/32	1/2	0.13	-140-0875	7/8	0.69			
-093-0625		5/8	0.17	-140-1000	1	0.69			
-093-0750		3/4	0.17	-140-1250	1-1/4	0.80			
-093-0875		7/8	0.22	-140-1500	1-1/2	0.95			
-093-1000		1	0.22	-140-1750	1-3/4	1.03			
-093-1250		1-1/4	0.26	-140-2000	2	1.15			
-093-1500		1-1/2	0.31	-140-2250	2-1/4	1.34			

DESCRIPTION	GENERAL USE	HOW TO IDENTIFY	APPLICATION
<p><b>CPHZ</b></p> <p>A special design cotter pin with an extended curved prong. When struck with a hammer the lower prong is forced forward, spreading the tines apart and locking the cotter into place.</p> <p><b>HAMMERLOCK</b></p>	<p>UNCOMMON</p>	<ol style="list-style-type: none"> <li>1. Verify hammerlock design.</li> <li>2. Measure diameter (D).</li> <li>3. Measure length (L).</li> <li>4. Find the part in the chart above.</li> </ol> <p><b>TYPICAL PART NUMBER SEQUENCE:</b> CPHZ-062-0250 is a 1/16" x 1/4" zinc hammerlock cotter pin.</p>	<p>The lower prong is spread apart and locks itself automatically.</p>

PERFORMANCE RESULTS VARY. YOUR PIN SELECTION SHOULD BE MADE BASED ON INDIVIDUAL APPLICATION.

**MOST SIZES AVAILABLE IMMEDIATELY • \$2 LINE REQUESTED • CALL FOR QUANTITY DISCOUNTS**

**POUND INTO PLACE!**




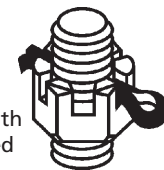
**HAMMERLOCK**

**MANUFACTURER CROSS-REFERENCE**

ITW/Bee-Leitzke	26	Pivot Point	COT
Western Wire		Hobbs	



CPHZ	Nominal (D)	Length (L)	WEIGHT	MATERIAL	CPHZ	Nominal (D)	Length (L)	WEIGHT	MATERIAL
	DIAMETER	LENGTH	Lbs. per 100 Pieces	Zinc Clear		DIAMETER	LENGTH	Lbs. per 100 Pieces	Zinc Clear
-140-2500	9/64	2-1/2	1.40		-250-1500	1/4	1-1/2	2.42	
-140-3000		3	1.65		-250-1750		1-3/4	2.68	
-140-3500		3-1/2	1.90		-250-2000		2	2.97	
-140-4000		4	2.20		-250-2250		2-1/4	3.29	
-156-0750	5/32	3/4	0.53		-250-2500		2-1/2	3.45	
-156-0875		7/8	0.69		-250-3000		3	4.03	
-156-1000		1	0.69		-250-3500		3-1/2	4.69	
-156-1250		1-1/4	0.80		-250-4000		4	5.20	
-156-1500		1-1/2	0.95		-250-4500		4-1/2	5.50	
-156-1750		1-3/4	1.03		-250-5000		5	6.00	
-156-2000		2	1.15		-250-6000		6	7.50	
-156-2250		2-1/4	1.34		-312-1000		1	3.22	
-156-2500	2-1/2	1.40	-312-1250		1-1/4	3.63			
-156-3000	3	1.65	-312-1500		1-1/2	4.01			
-156-3500	3-1/2	1.90	-312-1750		1-3/4	4.41			
-156-4000	4	2.20	-312-2000		2	5.18			
-187-0750	3/16	3/4	0.84		-312-2250	2-1/4	5.56		
-187-0875		7/8	1.04		-312-2500	2-1/2	5.94		
-187-1000		1	1.04		-312-2750	2-3/4	6.77		
-187-1250		1-1/4	1.21		-312-3000	3	6.77		
-187-1500		1-1/2	1.39		-312-3500	3-1/2	7.65		
-187-1750		1-3/4	1.53		-312-4000	4	8.38		
-187-2000		2	1.71		-312-5000	5	10.29		
-187-2250		2-1/4	1.89		-312-6000	6	12.00		
-187-2500		2-1/2	2.03		-375-1250	1-1/4	6.32		
-187-3000		3	2.37		-375-1500	1-1/2	6.32		
-187-3500		3-1/2	2.71		-375-1750	1-3/4	6.80		
-187-4000		4	3.03		-375-2000	2	7.36		
-218-1000	7/32	1	1.89		-375-2250	2-1/4	7.90		
-218-1250		1-1/4	2.07		-375-2500	2-1/2	8.65		
-218-1500		1-1/2	2.42		-375-3000	3	10.41		
-218-1750		1-3/4	2.68		-375-3500	3-1/2	11.23		
-218-2000		2	2.97		-375-4000	4	12.43		
-218-2250		2-1/4	3.29		-375-5000	5	15.24		
-218-2500		2-1/2	3.45		-375-6000	6	16.75		
-218-3000		3	4.03		-500-2000	2	16.40		
-218-3500		3-1/2	4.69		-500-2250	2-1/4	17.00		
-218-4000		4	5.20		-500-2500	2-1/2	19.00		
-218-4500		4-1/2	5.50		-500-3000	3	20.90		
-218-5000		5	6.00		-500-3500	3-1/2	23.30		
-218-6000	6	7.50	-500-4000		4	26.00			
-250-1000	1/4	1	1.89		-500-5000	5	31.00		
-250-1250		1-1/4	2.07		-500-6000	6	35.50		

DESCRIPTION	GENERAL USE	HOW TO IDENTIFY	APPLICATION
<p><b>CPHZ</b></p> <p>A special design cotter pin with an extended curved prong. When struck with a hammer the lower prong is forced forward, spreading the tines apart and locking the cotter into place.</p> <p><b>HAMMERLOCK</b></p>	 <p>UNCOMMON</p>	<ol style="list-style-type: none"> <li>1. Verify hammerlock design.</li> <li>2. Measure diameter (D).</li> <li>3. Measure length (L).</li> <li>4. Find the part in the chart above.</li> </ol> <p><b>TYPICAL PART NUMBER SEQUENCE:</b> CPHZ-187-1000 is a 3/16" x 1" zinc hammerlock cotter pin.</p>	 <p>For use with castellated nuts.</p>

PERFORMANCE RESULTS VARY. YOUR PIN SELECTION SHOULD BE MADE BASED ON INDIVIDUAL APPLICATION.

**MOST SIZES AVAILABLE IMMEDIATELY • \$2 LINE REQUESTED • CALL FOR QUANTITY DISCOUNTS**

All manufacturer names and numbers are for identification purposes only. In no way are we implying that our parts were made by the manufacturers listed above. Prices, materials, tolerances, and grades subject to change without notice.