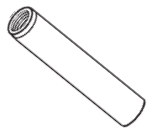
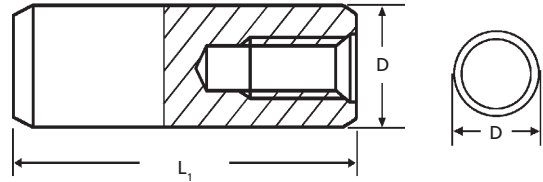


DOWEL PINS

785-392-3017 FAX 785.392.2845

REVISED 06-04
www.huyett.com

INTERNALLY THREADED



PULLOUT

MANUFACTURER CROSS-REFERENCE

Brighton-Best	26	Hobbs
---------------	----	-------

DOWP	Nominal (D)		Length (L)	Tap Size		WEIGHT Lbs. per 100 Pieces	MATERIAL	
	DIAMETER			Thread Pitch	Thread Depth		Alloy Steel "DOWP."	Stainless Steel "DOWPS."
-250-0750	1/4	.2503/.2501	3/4	8-32	.41	1.04		
-250-1000			1			1.39		
-250-1250			1-1/4			1.74		
-250-1500			1-1/2			2.09		
-250-1750			1-3/4			2.43		
-250-2000			2			2.78		
-250-2250			2-1/4			3.13		
-250-2500			2-1/2			3.48		
-312-0750	5/16	.3128/.3126	3/4	10-32	.47	1.63		
-312-1000			1			2.17		
-312-1250			1-1/4			2.72		
-312-1500			1-1/2			3.26		
-312-1750			1-3/4			3.80		
-312-2000			2			4.35		
-312-2250			2-1/4			4.89		
-312-2500			2-1/2			5.43		
-312-3000	3	6.52						
-375-0750	3/8	.3753/.3751	3/4	10-32	.47	2.35		
-375-1000			1			3.14		
-375-1125			1-1/8			3.53		
-375-1250			1-1/4			3.92		
-375-1500			1-1/2			4.69		
-375-1750			1-3/4			5.48		
-375-2000			2			6.26		
-375-2250			2-1/4			7.04		
-375-2500	2-1/2	7.82						
-375-3000	3	9.39						
-500-1000	1/2	.5003/.5001	1	1/4-20	.63	5.56		
-500-1250			1-1/4			6.95		
-500-1500			1-1/2			8.34		
-500-1750			1-3/4			9.73		
-500-2000			2			11.13		
-500-2250			2-1/4			12.52		
-500-2500			2-1/2			13.91		
-500-3000			3			16.69		
-500-3500	3-1/2	19.57						
-500-4000	4	22.25						

ALLOY STEEL HRC 60 MIN

DESCRIPTION	GENERAL USE	HOW TO IDENTIFY	APPLICATION
<p>Manufactured to same ASME standards as standard dowels, with a threaded hole at one end. The threaded hole allows for the installation of a T-handle wrench to assist in removal.</p> <p>PULLOUT</p>	<p>UNCOMMON</p>	<ol style="list-style-type: none"> Verify solid pin with countersunk tapped hole. Measure diameter (D). Measure length (L). Find the part in the chart above. <p>TYPICAL PART NUMBER SEQUENCE: DOWP-125-0750 is a 1/8" x 3/4" alloy steel pullout dowel pin.</p>	<p>Installs flush in a blind hole.</p>

PERFORMANCE RESULTS VARY. YOUR PIN SELECTION SHOULD BE MADE BASED ON INDIVIDUAL APPLICATION.

DOWEL PIN REMOVER/SETTER

Page 291

PULLER STUD

Page 291

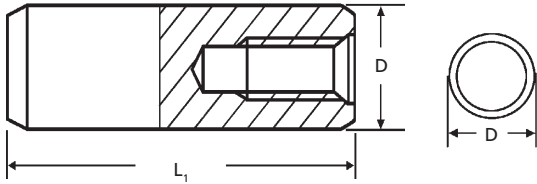
DOWPM

METRIC
Page 272

MOST SIZES AVAILABLE IMMEDIATELY • \$2 LINE REQUESTED • CALL FOR QUANTITY DISCOUNTS

INTERNALLY THREADED

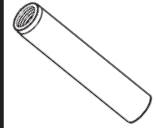
BOX 232 • MINNEAPOLIS, KS • 67467



PULLOUT

MANUFACTURER CROSS-REFERENCE

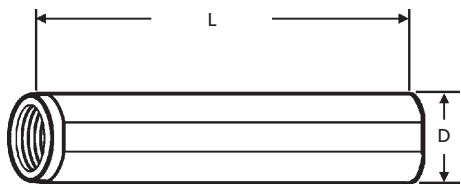
Brighton-Best	26	Hobbs
---------------	----	-------



DOWP	Nominal (D)		Length (L)	Tap Size		WEIGHT Lbs. per 100 Pieces	MATERIAL	
	DIAMETER	LENGTH		Thread Pitch	Thread Depth		Alloy Steel "DOWP-"	Stainless Steel "DOWPS-"
-625-1000	5/8	.6253/.6251	1	1/4-20	.63	8.69		
-625-1250			1-1/4			10.87		
-625-1500			1-1/2			13.04		
-625-1750			1-3/4			15.21		
-625-2000			2			17.38		
-625-2250			2-1/4			19.56		
-625-2500			2-1/2			21.73		
-625-3000			3			26.08		
-625-3500			3-1/2			30.42		
-625-4000			4			34.77		
-750-1000	3/4	.7503/.7501	1	5/16-18	.78	12.52		
-750-1250			1-1/4			15.64		
-750-1500			1-1/2			18.77		
-750-1750			1-3/4			21.90		
-750-2000			2			25.03		
-750-2250			2-1/4			28.16		
-750-2500			2-1/2			31.29		
-750-3000			3			37.55		
-750-3500			3-1/2			43.81		
-750-4000			4			50.06		
-1000-2000	1	1.0003/1.0001	2			45.20		
-1000-2250			2-1/4			50.60		
-1000-2500			2-1/2			56.00		
-1000-3000			3			67.20		
-1000-3500			3-1/2			79.20		
-1000-4000			4			92.00		

ALLOY STEEL HRC 60 MIN

FLAT VENT PULLOUT



FLAT VENT

MANUFACTURER CROSS-REFERENCE



CALL FOR PRICING AND AVAILABILITY.

SPIRAL GROOVED PULLOUT



These designs are used primarily in blind hole applications. The vents and grooves allow gas or liquid to escape as the medium is displaced during insertion of the pin into the hole.

SPIRAL GROOVED

MANUFACTURER CROSS-REFERENCE



CALL FOR PRICING AND AVAILABILITY.

MOST SIZES AVAILABLE IMMEDIATELY • \$2 LINE REQUESTED • CALL FOR QUANTITY DISCOUNTS

All manufacturer names and numbers are for identification purposes only. In no way are we implying that our parts were made by the manufacturers listed above. Prices, materials, tolerances, and grades subject to change without notice.