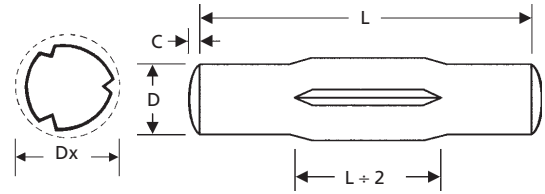


GROOVED PINS

785-392-3017 FAX 785.392.2845

REVISED 06-04
www.huyett.com

THREE HALF-LENGTH CENTERED GROOVES



TYPE E

MANUFACTURER CROSS-REFERENCE

ANSI	E	Driv-Lok	E
Groov-Pin	5		

GP-E	Nominal (D)		Length (L)	Expanded Diameter (Dx)	Hole Size	Crown Height (C)	Crown Radius	WEIGHT Lbs. per 100 Pieces	MATERIAL		
	DIAMETER	LENGTH							Zinc Clear "GP-"	Alloy HIT "GPA-"	Stainless "GPS-"
-0062-0250	1/16	+.000/- .001	1/4	.068	.062	.0065	5/64	0.02			
-0062-0375			3/8					0.03			
-0062-0500			1/2					0.04			
-0062-0625			5/8					0.05			
-0062-0750			3/4					0.07			
-0062-0875			7/8					0.08			
-0062-1000			1					0.09			
-0093-0250	3/32	+.000/- .001	1/4	.101	.093	.0091	1/8	0.06			
-0093-0375			3/8					0.08			
-0093-0500			1/2					0.10			
-0093-0625			5/8					0.12			
-0093-0750			3/4					0.15			
-0093-0875			7/8					0.17			
-0093-1000			1					0.20			
-0093-1250	1-1/4	0.25									
-0125-0250	1/8	+/- .010	1/4	.134	.125	.0130	5/32	0.09			
-0125-0375			3/8					0.13			
-0125-0500			1/2					0.17			
-0125-0625			5/8					0.22			
-0125-0750			3/4					0.26			
-0125-0875			7/8					0.30			
-0125-1000			1					0.35			
-0125-1250	1-1/4	0.44									
-0125-1500	1-1/2	0.48									
-0156-0375	5/32	+.000/- .002	3/8	.166	.156	.0170	3/16	0.20			
-0156-0500			1/2					0.27			
-0156-0625			5/8					0.34			
-0156-0750			3/4					0.41			
-0156-0875			7/8					0.48			
-0156-1000			1					0.54			
-0156-1250			1-1/4					0.68			
-0156-1500	1-1/2	0.82									
-0156-1750	1-3/4	0.95									
-0156-2000	2	1.09									
-0187-0375	3/16	+.004/- .000	3/8	.198	.187	.0180	1/4	0.29			
-0187-0500			1/2					0.39			
-0187-0625			5/8					0.49			
-0187-0750			3/4					0.59			
-0187-0875			7/8					0.69			

DESCRIPTION	GENERAL USE	HOW TO IDENTIFY	APPLICATION
<p>GP-E</p> <p>Three half-length centered and parallel grooves mean that most of the holding power on this pin is in the middle. Smooth ends work as a cross pin, cotter pin, or handle.</p> <p>TYPE E</p>	<p>UNCOMMON</p>	<ol style="list-style-type: none"> 1. Verify three half-length parallel grooves. 2. Measure diameter (D). 3. Measure length (L). 4. Find the part in the chart above. <p>TYPICAL PART NUMBER SEQUENCE: GPA-0187-0500-E is a 3/16" x 1/2", type E, alloy grooved pin.</p>	<p>As a handle.</p>

PERFORMANCE RESULTS VARY. YOUR PIN SELECTION SHOULD BE MADE BASED ON INDIVIDUAL APPLICATION.

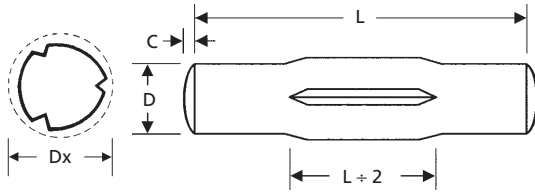
ADDITIONAL TECHNICAL DATA ON PAGE 128.

DIN 1475 METRIC Page 252

MOST SIZES AVAILABLE IMMEDIATELY • \$2 LINE REQUESTED • CALL FOR QUANTITY DISCOUNTS

THREE HALF-LENGTH CENTERED GROOVES

BOX 232 • MINNEAPOLIS, KS • 67467



TYPE E			
MANUFACTURER CROSS-REFERENCE			
ANSI	E	Driv-Lok	E
Groov-Pin	5		



GP-E	Nominal (D)	Length (L)	Expanded Diameter (Dx)	Hole Size	Crown Height (C)	Crown Radius	WEIGHT	MATERIAL		
	DIAMETER	LENGTH					Lbs. per 100 Pieces	Zinc Clear "GP."	Alloy HIT "GPA."	Stainless "GPS."
-0187-1000	3/16	1	.198	.187	.0180	1/4	0.78			
-0187-1250		1-1/4	.197				0.98			
-0187-1500		1-1/2	.197				1.17			
-0187-1750		1-3/4	.197				1.37			
-0187-2000	2	.196	1.57							
-0218-0500	7/32	1/2	.230	.218	.0220	9/32	0.53			
-0218-0625		5/8					0.67			
-0218-0750		3/4					0.80			
-0218-0875		7/8					0.93			
-0218-1000	1/4	1	.229	.250	.0260	5/16	1.07			
-0218-1250		1-1/4					1.33			
-0218-1500		1-1/2					1.60			
-0218-1750		1-3/4					1.87			
-0218-2000	2	.229	2.13							
-0218-2250	2-1/4	.263	2.40							
-0250-0500	1/4	1/2	.263	.250	.0260	5/16	0.70			
-0250-0625		5/8					0.87			
-0250-0750		3/4					1.04			
-0250-0875		7/8					1.22			
-0250-1000	1	.262	1.39							
-0250-1250	1-1/4	.262	1.74							
-0250-1500	1-1/2	.262	2.09							
-0250-1750	1-3/4	.262	2.44							
-0250-2000	2	.261	2.78							
-0250-2250	2-1/4	.261	3.13							
-0250-2500	2-1/2	.261	3.48							
-0250-2750	2-3/4	.261	3.83							
-0312-0625	5/16	5/8	.329	.312	.0340	3/8	1.36			
-0312-0750		3/4					1.63			
-0312-0875		7/8					1.90			
-0312-1000		1					2.17			
-0312-1250	1-1/4	.328	2.72							
-0312-1500	1-1/2	.328	3.26							
-0312-1750	1-3/4	.328	3.81							
-0312-2000	2	.327	4.35							
-0312-2250	2-1/4	.327	4.89							
-0312-2500	2-1/2	.327	5.44							
-0312-2750	2-3/4	.327	5.98							

DESCRIPTION	GENERAL USE	HOW TO IDENTIFY	APPLICATION
<p>GP-E</p> <p>Three half-length centered and parallel grooves mean that most of the holding power on this pin is in the middle. Smooth ends work as a cross pin, cotter pin, or handle.</p> <p>TYPE E</p>	<p>UNCOMMON</p>	<ol style="list-style-type: none"> Verify three half-length parallel grooves. Measure diameter (D). Measure length (L). Find the part in the chart above. <p>TYPICAL PART NUMBER SEQUENCE: GPS-0312-0875-E is a 5/16" x 7/8", type E, stainless steel pin.</p>	<p>As a cross bar.</p>

PERFORMANCE RESULTS VARY. YOUR PIN SELECTION SHOULD BE MADE BASED ON INDIVIDUAL APPLICATION.



MOST SIZES AVAILABLE IMMEDIATELY • \$2 LINE REQUESTED • CALL FOR QUANTITY DISCOUNTS

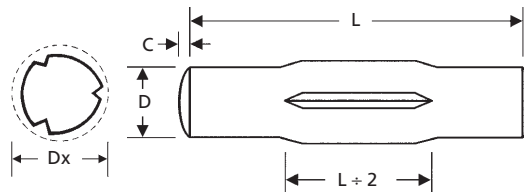
All manufacturer names and numbers are for identification purposes only. In no way are we implying that our parts were made by the manufacturers listed above. Prices, materials, tolerances, and grades subject to change without notice.

GROOVED PINS

785-392-3017 FAX 785.392.2845

REVISED 06-04
www.huyett.com

THREE HALF-LENGTH CENTERED GROOVES



TYPE E

MANUFACTURER CROSS-REFERENCE

ANSI	E	Driv-Lok	E
Groov-Pin	5		

GP-E	Nominal (D)		Length (L)	Expanded Diameter (Dx)	Hole Size	Crown Height (C)	Crown Radius	WEIGHT Lbs. per 100 Pieces	MATERIAL			
	DIAMETER	LENGTH							Zinc Clear "GP-"	Alloy HIT "GPA-"	Stainless "GPS-"	
-0375-0750	3/8	+ .000/- .002	3/4	.394	.375	.0390	15/32	2.35				
-0375-0875			7/8									+ .005/- .000
-0375-1000			1									
-0375-1250			1-1/4									
-0375-1500			1-1/2									
-0375-1750			1-3/4									
-0375-2000			2									
-0375-2250			2-1/4									
-0375-2500			2-1/2									
-0375-2750			2-3/4									
-0375-3000	3	+ .005/- .010										
-0375-3250	3-1/4		.393									
-0375-3500	3-1/2			.392								
-0437-0875	7/8				.391							
-0437-1000	1					.375						
-0437-1250	1-1/4						.0390					
-0437-1500	1-1/2							15/32				
-0437-1750	1-3/4								+ .005/- .010			
-0437-2000	2									2.35		
-0437-2250	2-1/4										2.74	
-0437-2500	2-1/2	3.13										
-0437-2750	2-3/4		3.91									
-0437-3000	3			4.70								
-0437-3250	3-1/4				5.48							
-0437-3500	3-1/2					6.26						
-0500-1000	1						7.05					
-0500-1250	1-1/4							7.83				
-0500-1500	1-1/2								8.61			
-0500-1750	1-3/4									9.39		
-0500-2000	2										10.18	
-0500-2250	2-1/4	10.96										
-0500-2500	2-1/2		3.73									
-0500-2750	2-3/4			4.26								
-0500-3000	3				5.33							
-0500-3250	3-1/4					6.39						
-0500-3500	3-1/2						7.46					
-0500-1000	1							8.52				
-0500-1250	1-1/4								9.59			
-0500-1500	1-1/2									10.66		
-0500-1750	1-3/4										11.72	
-0500-2000	2	12.79										
-0500-2250	2-1/4		13.85									
-0500-2500	2-1/2			14.92								
-0500-2750	2-3/4				5.57							
-0500-3000	3					6.96						
-0500-3250	3-1/4						8.35					
-0500-3500	3-1/2							9.74				
-0500-1000	1								11.30			
-0500-1250	1-1/4									12.53		
-0500-1500	1-1/2										13.92	
-0500-1750	1-3/4	15.31										
-0500-2000	2		16.70									
-0500-2250	2-1/4			18.09								
-0500-2500	2-1/2				19.48							
-0500-2750	2-3/4											
-0500-3000	3											
-0500-3250	3-1/4											
-0500-3500	3-1/2											

DESCRIPTION	GENERAL USE	HOW TO IDENTIFY	APPLICATION
<p>GP-E</p> <p>Three half-length centered and parallel grooves mean that most of the holding power on this pin is in the middle. Smooth ends work as a cross pin, cotter pin, or handle.</p> <p>TYPE E</p>	<p>UNCOMMON</p>	<ol style="list-style-type: none"> 1. Verify three half-length parallel grooves. 2. Measure diameter (D). 3. Measure length (L). 4. Find the part in the chart above. <p>TYPICAL PART NUMBER SEQUENCE: GP-0437-1750-E is a 7/16" x 1-3/4", type E, steel zinc grooved pin.</p>	<p>As a linkage pin.</p>

PERFORMANCE RESULTS VARY. YOUR PIN SELECTION SHOULD BE MADE BASED ON INDIVIDUAL APPLICATION.

ADDITIONAL TECHNICAL DATA ON PAGE 128.

DIN 1475 **METRIC** Page 252

MOST SIZES AVAILABLE IMMEDIATELY • \$2 LINE REQUESTED • CALL FOR QUANTITY DISCOUNTS