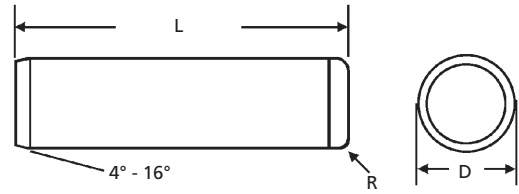


# DOWEL PINS

785-392-3017 FAX 785.392.2845

REVISED 06-04  
www.huyett.com

MS16555



		<b>MILITARY</b>				
		<b>MANUFACTURER CROSS-REFERENCE</b>				
	MS	16555	See also	MS16556		
	See also	MS9389	See also	MS9390		
Nominal (D)	Length (L)	Actual Diameter (D) Max / Min	WEIGHT Lbs. per 100 Pieces	MATERIAL		
				ALLOY STEEL MS16555-	PHOSPHATE MS16555-	STAINLESS STEEL MS16555-
DIAMETER	LENGTH					
1/16	3/16	.0628 / .0626	0.02	-001	-301	-601
	1/4		0.02	-002	-302	-602
	5/16		0.03	-003	-303	-603
	3/8		0.03	-004	-304	-604
	7/16		0.04	-005	-305	-605
	1/2		0.04	-006	-306	-606
	5/8		0.05	-007	-307	-607
5/64	3/4	.0784 / .0782	0.06	-008	-308	-608
	1/4		0.03	-009	-309	-609
	5/16		0.04	-010	-310	-610
	3/8		0.04	-011	-311	-611
	7/16		0.04	-012	-312	-612
	1/2		0.05	-013	-313	-613
	5/8		0.06	-014	-314	-614
3/32	3/4	.0941 / .0939	0.07	-015	-315	-615
	7/8		0.08	-016	-316	-616
	3/16		0.04	-145	---	---
	1/4		0.05	---	---	---
	5/16		0.06	-017	-317	-617
	3/8		0.07	-018	-318	-618
	7/16		0.08	-019	-319	-619
	1/2		0.10	-020	-320	-620
1/8	5/8	.1253 / .1251	0.12	-021	-321	-621
	3/4		0.15	-022	-322	-622
	7/8		0.17	-023	-323	-623
	1		0.19	-024	-324	-624
	3/8		0.13	-025	-325	-625
	7/16		0.16	-026	-326	-626
	1/2		0.17	-027	-327	-627
	5/8		0.22	-028	-328	-628
5/32	3/4	.1565 / .1563	0.26	-029	-329	-629
	7/8		0.30	-030	-330	-630
	1		0.35	-031	-331	-631
	1-1/4		0.44	-032	-332	-632
	1-1/2		0.52	-033	-333	-633
	1/2		0.29	-034	-334	-634
	5/8		0.34	-035	-335	-635
	3/4		0.49	-036	-336	-636
	7/8		0.54	-037	-337	-637
	1		0.58	-038	-338	-638
	1-1/4		0.73	-039	-339	-639

ALLOY STEEL HRC 60 MIN

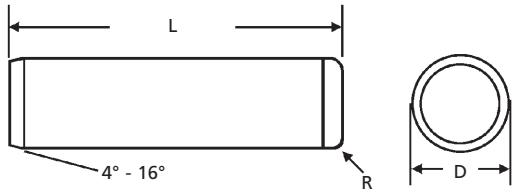
DESCRIPTION	GENERAL USE	HOW TO IDENTIFY	APPLICATION
<p><b>MS 16555</b></p> <p>A cylindrical solid pin with machined ends for easy insertion. These parts meet MS16555, additional charges for certification may apply.</p> <p><b>MILITARY</b></p>	<p>UNCOMMON</p>	<ol style="list-style-type: none"> <li>1. Verify solid pin with proper end designs.</li> <li>2. Measure diameter (D).</li> <li>3. Measure length (L).</li> <li>4. Find the part in the chart above.</li> </ol> <p><b>TYPICAL PART NUMBER SEQUENCE:</b> MS16555-601 is a 1/16" x 3/16" stainless steel dowel pin.</p>	<p>As a stop pin on a rotating handle.</p>

PERFORMANCE RESULTS VARY. YOUR PIN SELECTION SHOULD BE MADE BASED ON INDIVIDUAL APPLICATION.

**MOST SIZES AVAILABLE IMMEDIATELY • \$2 LINE REQUESTED • CALL FOR QUANTITY DISCOUNTS**

**MS16555**

BOX 232 • MINNEAPOLIS, KS • 67467



<b>MILITARY</b>			
<b>MANUFACTURER CROSS-REFERENCE</b>			
MS	16555	See also	MS16556
See also	MS9389	See also	MS9390

Nominal (D)	Length (L)	Actual Diameter (D) Max / Min	WEIGHT Lbs. per 100 Pieces	<b>MATERIAL</b>		
				ALLOY STEEL MS16555-	PHOSPHATE MS16555-	STAINLESS STEEL MS16555-
DIAMETER	LENGTH					
<b>3/16</b>	5/8	.1878 / .1876	0.49	-040	-340	-640
	3/4		0.59	-041	-341	-641
	7/8		0.69	-042	-342	-642
	1		0.78	-043	-343	-643
	1-1/4		0.98	-044	-344	-644
	1-1/2		1.17	-045	-345	-645
<b>1/4</b>	3/4	.2503 / .2501	1.04	-046	-346	-646
	7/8		1.22	-047	-347	-647
	1		1.39	-048	-348	-648
	1-1/4		1.74	-049	-349	-649
	1-1/2		2.09	-050	-350	-650
	1-3/4		2.43	-051	-351	-651
	2		2.78	-052	-352	-652
	2-1/2		3.12	-053	-353	-653
<b>5/16</b>	1-1/4	.3128 / .3126	2.72	-054	-354	-654
	1-1/2		3.26	-055	-355	-655
	1-3/4		3.80	-056	-356	-656
	2		4.35	-057	-357	-657
	2-1/4		4.89	-058	-358	-658
	2-1/2		5.43	-059	-359	-659
<b>3/8</b>	1-1/4	.3753 / .3751	3.92	-060	-360	-660
	1-1/2		4.69	-061	-361	-661
	1-3/4		5.48	-062	-362	-662
	2		6.26	-063	-363	-663
	2-1/4		7.04	-064	-364	-664
	2-1/2		7.82	-065	-365	-665
	2-3/4		8.60	-066	-366	-666
	3		9.39	-067	-367	-667
<b>7/16</b>	1-1/2	.4378 / .4376	6.39	-068	-368	-668
	1-3/4		7.45	-069	-369	-669
	2		8.52	-070	-370	-670
	2-1/4		10.01	-071	-371	-671
	2-1/2		10.65	-072	-372	-672
	2-3/4		11.29	-073	-373	-673
<b>1/2</b>	3	.5003 / .5001	12.70	-074	-374	-674
	1-1/2		8.34	-077	-377	-677
	1-3/4		9.73	-078	-378	-678
	2		11.13	-079	-379	-679
	2-1/4		12.52	-080	-380	-680
	2-1/2		13.91	-081	-381	-681
	2-3/4		15.30	-082	-382	-682
	3		16.69	-083	-383	-683
	3-1/4		18.13	-084	-384	-684
	3-1/2		19.57	-085	-385	-685
3-3/4	20.91	-086	-386	-686		
4	22.25	-087	-387	-687		

ALLOY STEEL HRC 60 MIN

+/- .010

**INSERTION TOOL**

Page 290

**DRIVE TOOL**

Page 290

**MOST SIZES AVAILABLE IMMEDIATELY • \$2 LINE REQUESTED • CALL FOR QUANTITY DISCOUNTS**

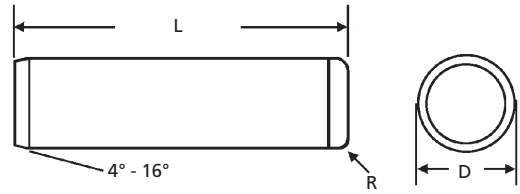
All manufacturer names and numbers are for identification purposes only. In no way are we implying that our parts were made by the manufacturers listed above. Prices, materials, tolerances, and grades subject to change without notice.

# DOWEL PINS

785-392-3017 FAX 785.392.2845

REVISED 06-04  
www.huyett.com


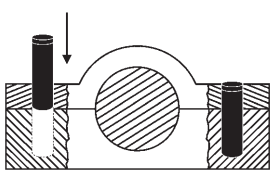
MS16555



<b>MILITARY</b>			
<b>MANUFACTURER CROSS-REFERENCE</b>			
MS	16555	See also	MS16556
See also	MS9389	See also	MS9390

Nominal (D)	Length (L)	Actual Diameter (D) Max / Min	WEIGHT Lbs. per 100 Pieces	MATERIAL		
				ALLOY STEEL MS16555-	PHOSPHATE MS16555-	STAINLESS STEEL MS16555-
DIAMETER	LENGTH					
5/8	2	.6253 / .6251	17.38	-088	-388	-688
	2-1/4		19.56	-089	-389	-689
	2-1/2		21.73	-090	-390	-690
	2-3/4		23.91	-091	-391	-691
	3		26.08	-092	-392	-692
	3-1/4		28.25	-093	-393	-693
	3-1/2		30.42	-094	-394	-694
	3-3/4		32.60	-095	-395	-695
	4		34.77	-096	-396	-696
	4-1/2		39.11	-098	-398	-698
5	43.46	-100	-400	-700		
3/4	2-1/4	.7053 / .7501	28.13	-101	-401	-701
	2-1/2		31.29	-102	-402	-702
	2-3/4		34.42	-103	-403	-703
	3		37.55	-104	-404	-704
	3-1/4		40.68	-105	-405	-705
	3-1/2		43.81	-106	-406	-706
	3-3/4		46.94	-107	-407	-707
	4		50.06	-108	-408	-708
	4-1/2		56.22	-110	-410	-710
	5		62.58	-112	-412	-712
6	75.09	-116	-416	-716		
7/8	2-3/4	.8753 / .8751	51.50	-117	-417	-717
	3		53.20	-118	-418	-718
	3-1/4		56.60	-119	-419	-719
	3-1/2		60.00	-120	-420	-720
	3-3/4		64.50	-121	-421	-721
	4		69.00	-122	-422	-722
	4-1/2		79.00	-124	-424	-724
	5		88.00	-126	-426	-726
	6		104.00	-130	-430	-730
	6		75.09	-116	-416	-716
1	3	1.0003 / 1.0001	67.20	-132	-432	-732
	3-1/4		73.20	-133	-433	-733
	3-1/2		79.20	-134	-434	-734
	3-3/4		85.60	-135	-435	-735
	4		92.00	-136	-436	-736
	4-1/2		102.00	-138	-438	-738
	5		113.00	-140	-440	-740
6	135.00	-144	-444	-744		

ALLOY STEEL HRC 60 MIN

<b>MS 16555</b>	<b>DESCRIPTION</b>	<b>GENERAL USE</b>	<b>HOW TO IDENTIFY</b>	<b>APPLICATION</b>
	A cylindrical solid pin with machined ends for easy insertion. These parts meet MS16555, additional charges for certification may apply.	 <b>UNCOMMON</b>	<ol style="list-style-type: none"> <li>1. Verify solid pin with proper end designs.</li> <li>2. Measure diameter (D).</li> <li>3. Measure length (L).</li> <li>4. Find the part in the chart above.</li> </ol> <p><b>TYPICAL PART NUMBER SEQUENCE:</b> MS16555-088 is a 5/8" x 2" alloy steel dowel pin.</p>	<p>As a linking device.</p> 
<b>MILITARY</b>				
<i>PERFORMANCE RESULTS VARY. YOUR PIN SELECTION SHOULD BE MADE BASED ON INDIVIDUAL APPLICATION.</i>				

**INSERTION TOOL**



Page 290

**DRIVE TOOL**



Page 290

**MOST SIZES AVAILABLE IMMEDIATELY • \$2 LINE REQUESTED • CALL FOR QUANTITY DISCOUNTS**