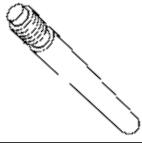


TAPERED PINS

785-392-3017 FAX 785.392.2845

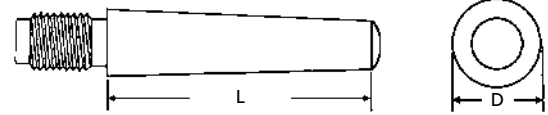
REVISED 06-04
www.huyett.com

AVAILABLE WITH OR WITHOUT NUT



EXTERNAL THREADED MANUFACTURER CROSS-REFERENCE

See also AN386



TPT	Number	Length (L)	Nominal Diameter (D)	Thread Pitch	WEIGHT Lbs. per 100 Pieces	MATERIAL			
	NUMBER	LENGTH				Plain "TPT-"	Plain with Nut "TPTN-"	Stainless "TPTS-"	SS with Nut "TPTSN-"
	0	3/4	.154	6-32	0.41				
		1			0.51				
		1-1/4			0.60				
		1-1/2			0.69				
		1-3/4			0.77				
		2			0.85				
		2-1/4			1.15				
		2-1/2			1.28				
		2-3/4			1.40				
		3			1.53				
	1	3/4	.170	8-32	0.46				
		1			0.60				
		1-1/4			0.74				
		1-1/2			0.87				
		1-3/4			0.99				
		2			1.08				
		2-1/4			1.16				
		2-1/2			1.23				
		2-3/4			1.29				
		3			1.36				
	2	3/4	.191	10-32	0.59				
		1			0.76				
		1-1/4			0.92				
		1-1/2			1.07				
		1-3/4			1.22				
		2			1.36				
		2-1/4			1.49				
		2-1/2			1.61				
		2-3/4			1.72				
		3			1.83				
		3-1/4			2.47				
		3-1/2			2.66				
		3-3/4			2.85				
		4			3.04				
	4-1/4	3.23							
	4-1/2	3.42							
	3	3/4	.217	10-32	0.78				
		1			1.02				
		1-1/4			1.20				
		1-1/2			1.43				
		1-3/4			1.63				

+0.010/-0.010

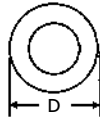
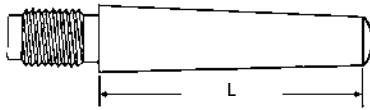
DESCRIPTION	GENERAL USE	HOW TO IDENTIFY	APPLICATION
<p>TPT</p> <p>Solid cylindrical pin with a uniform taper that runs the entire length of the pin and is threaded at large end. These reusable pins work well in blind holes and can be removed by tightening down a hex nut.</p> <p>EXTERNAL THREADED</p>	<p>UNCOMMON</p>	<ol style="list-style-type: none"> Verify solid tapered pin with threaded end. Measure diameter (D). Measure length (L). <p>TYPICAL PART NUMBER SEQUENCE: TPT-00-0750 is a #0 x 3/4" plain threaded tapered pin.</p>	<p>Used in a blind hole and removed with a hex nut.</p>

PERFORMANCE RESULTS VARY. YOUR PIN SELECTION SHOULD BE MADE BASED ON INDIVIDUAL APPLICATION.

MOST SIZES AVAILABLE IMMEDIATELY • \$2 LINE REQUESTED • CALL FOR QUANTITY DISCOUNTS

AVAILABLE WITH OR WITHOUT NUT

BOX 232 • MINNEAPOLIS, KS • 67467



EXTERNAL THREADED

MANUFACTURER CROSS-REFERENCE

See also

AN386



TPT	Number	Length (L)	Nominal Diameter (D)	Thread Pitch	WEIGHT Lbs. per 100 Pieces	MATERIAL			
	NUMBER	LENGTH				Plain "TPT-"	Plain with Nut "TPTN-"	Stainless "TPTS-"	SS with Nut "TPTSN-"
	3	2	.217	10-32	1.83				
		2-1/4			2.00				
		2-1/2			2.20				
		2-3/4			2.36				
		3			2.50				
		3-1/4			2.64				
		3-1/2			2.78				
		3-3/4			2.91				
		4			3.04				
		4-1/4			4.34				
		4-1/2			4.59				
		4-3/4			4.85				
		5			5.10				
		5-1/4			5.36				
		5-1/2			5.61				
	5-3/4	5.87							
	6	6.12							
	4	3/4	.248	1/4-28	1.08				
		1			1.38				
		1-1/4			1.66				
		1-1/2			1.92				
		1-3/4			2.16				
		2			2.40				
		2-1/4			2.64				
		2-1/2			2.87				
		2-3/4			3.10				
		3			3.31				
		3-1/4			3.50				
		3-1/2			3.69				
		3-3/4			3.87				
		4			4.02				
		4-1/4			5.87				
	4-1/2	6.21							
	4-3/4	6.56							
	5	6.90							
	5-1/4	7.25							
	5-1/2	7.59							
	5-3/4	7.94							
	6	8.28							
	5	3/4	.287	1/4-28	1.41				
		1			1.80				
		1-1/4			2.19				

+ .010/- .010

TAPER PIN REAMERS

 Page 290

Some people feel like a nut, some don't.

TPTME

METRIC
 Page 282

MOST SIZES AVAILABLE IMMEDIATELY • \$2 LINE REQUESTED • CALL FOR QUANTITY DISCOUNTS

All manufacturer names and numbers are for identification purposes only. In no way are we implying that our parts were made by the manufacturers listed above. Prices, materials, tolerances, and grades subject to change without notice.

TAPERED PINS

785-392-3017 FAX 785.392.2845

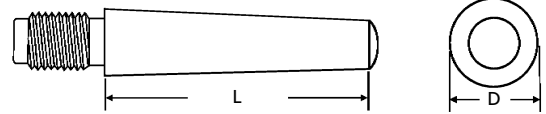
REVISED 06-04
www.huyett.com

AVAILABLE WITH OR WITHOUT NUT



EXTERNAL THREADED MANUFACTURER CROSS-REFERENCE

See also AN386



TPT	Number	Length (L)	Nominal Diameter (D)	Thread Pitch	WEIGHT Lbs. per 100 Pieces	MATERIAL				
	NUMBER	LENGTH				Plain "TPT-"	Plain with Nut "TPTN-"	Stainless "TPTS-"	SS with Nut "TPTSN-"	
-05-1500	5	1-1/2	.287	1/4-28	2.57					
-05-1750		1-3/4								2.93
-05-2000		2								3.28
-05-2250		2-1/4								3.64
-05-2500		2-1/2								3.98
-05-2750		2-3/4								4.32
-05-3000		3								4.63
-05-3250		3-1/4								4.90
-05-3500		3-1/2								5.16
-05-3750		3-3/4								5.41
-05-4000		4								5.63
-05-4250		4-1/4								5.86
-05-4500		4-1/2								6.08
-05-4750		4-3/4								6.29
-05-5000		5								6.49
-05-5250		5-1/4								9.45
-05-5500		5-1/2								9.90
-05-5750		5-3/4								10.35
-05-6000	6	10.80	+.010/-010							
-06-0750	3/4	2.00								
-06-1000	1	2.58								
-06-1250	1-1/4	3.15								
-06-1500	1-1/2	3.70								
-06-1750	1-3/4	4.23								
-06-2000	2	4.73								
-06-2250	2-1/4	5.22								
-06-2500	2-1/2	5.70								
-06-2750	2-3/4	6.17								
-06-3000	3	6.61								
-06-3250	3-1/4	6.99								
-06-3500	3-1/2	7.36								
-06-3750	3-3/4	7.72								
-06-4000	4	8.06								
-06-4250	4-1/4	8.40								
-06-4500	4-1/2	8.73								
-06-4750	4-3/4	9.05								
-06-5000	5	9.38								
-06-5250	5-1/4	9.67								
-06-5500	5-1/2	9.95								
-06-5750	5-3/4	10.20								
-06-6000	6	10.50								

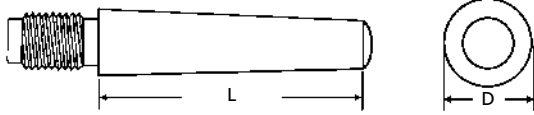
DESCRIPTION	GENERAL USE	HOW TO IDENTIFY	APPLICATION
<p>TPT</p> <p>Solid cylindrical pin with a uniform taper that runs the entire length of the pin and is threaded at one end. These reusable pins work well in blind holes and can be removed by tightening a hex nut.</p> <p>EXTERNAL THREADED</p>	<p>UNCOMMON</p>	<ol style="list-style-type: none"> Verify solid tapered pin with threaded end. Measure diameter (D). Measure length (L). Find the part in the chart above. <p>TYPICAL PART NUMBER SEQUENCE: TPTS-02-3000 is a #2" x 3" stainless threaded tapered pin.</p>	<p>To hold a clock hand mechanism together.</p>

PERFORMANCE RESULTS VARY. YOUR PIN SELECTION SHOULD BE MADE BASED ON INDIVIDUAL APPLICATION.

MOST SIZES AVAILABLE IMMEDIATELY • \$2 LINE REQUESTED • CALL FOR QUANTITY DISCOUNTS

AVAILABLE WITH OR WITHOUT NUT

BOX 232 • MINNEAPOLIS, KS • 67467



EXTERNAL THREADED

MANUFACTURER CROSS-REFERENCE

See also AN386



TPT	Number	Length (L)	Nominal Diameter (D)	Thread Pitch	WEIGHT Lbs. per 100 Pieces	MATERIAL			
	NUMBER	LENGTH				Plain "TPT-"	Plain with Nut "TPTN-"	Stainless "TPTS-"	SS with Nut "TPTSN-"
	7	1	.407	3/8-24	3.70				
		1-1/4			4.53				
		1-1/2			5.34				
		1-3/4			6.12				
		2			6.88				
		2-1/4			7.63				
		2-1/2			8.37				
		2-3/4			9.10				
		3			9.79				
		3-1/4			10.40				
		3-1/2			11.00				
		3-3/4			11.60				
		4			12.10				
		4-1/4			12.70				
		4-1/2			13.20				
		4-3/4			13.80				
		5			14.30				
		5-1/4			14.80				
		5-1/2			15.30				
		5-3/4			15.80				
		6			16.30				
	8	1	.490	7/16-20	5.40				
		1-1/4			6.63				
		1-1/2			7.83				
		1-3/4			8.99				
		2			10.10				
		2-1/4			11.20				
		2-1/2			12.30				
		2-3/4			13.40				
		3			14.40				
		3-1/4			15.50				
		3-1/2			16.50				
		3-3/4			17.40				
		4			18.30				
		4-1/4			19.30				
		4-1/2			20.10				
	4-3/4	21.00							
	5	21.90							
	5-1/4	22.70							
	5-1/2	23.50							
	5-3/4	24.20							
	6	25.00							

+ .010/- .010

TAPER PIN REAMERS

Page 290

ASSORTMENTS BEGIN

Page 286

MOST SIZES AVAILABLE IMMEDIATELY • \$2 LINE REQUESTED • CALL FOR QUANTITY DISCOUNTS

All manufacturer names and numbers are for identification purposes only. In no way are we implying that our parts were made by the manufacturers listed above. Prices, materials, tolerances, and grades subject to change without notice.

TAPERED PINS

785-392-3017 FAX 785.392.2845

REVISED 06-04
www.huyett.com

AVAILABLE WITH OR WITHOUT NUT

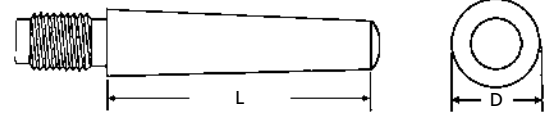


EXTERNAL THREADED

MANUFACTURER CROSS-REFERENCE

See also

AN386



TPT	Nominal (D)	Length (L)	Number	Thread Pitch	WEIGHT Lbs. per 100 Pieces	MATERIAL			
	DIAMETER	LENGTH				Plain "TPT-"	Plain with Nut "TPTN-"	Stainless "TPTS-"	SS with Nut "TPTSN-"
-08-6250	8	6-1/4	.490	7/16-20	25.80				
-08-6500		6-1/2			26.50				
-08-6750		6-3/4			27.20				
-08-7000	9	7	.589	1/2-20	27.90				
-09-1000		1			7.50				
-09-1250		1-1/4			9.38				
-09-1500		1-1/2			11.60				
-09-1750		1-3/4			13.30				
-09-2000		2			15.00				
-09-2250		2-1/4			16.80				
-09-2500		2-1/2			18.40				
-09-2750		2-3/4			20.00				
-09-3000		3			21.50				
-09-3250		3-1/4			23.00				
-09-3500		3-1/2			24.50				
-09-3750		3-3/4			26.00				
-09-4000		4			27.40				
-09-4250		4-1/4			28.90				
-09-4500		4-1/2			30.30				
-09-4750		4-3/4			31.60				
-09-5000	5	33.00							
-09-5250	5-1/4	34.30							
-09-5500	5-1/2	35.60							
-09-5750	5-3/4	36.90							
-09-6000	6	38.10							
-09-6250	6-1/4	39.30							
-09-6500	6-1/2	40.40							
-09-6750	6-3/4	41.50							
-09-7000	7	42.60							
-10-1000	10	1	.704	5/8-18	10.90				
-10-1250		1-1/4			13.63				
-10-1500		1-1/2			16.35				
-10-1750		1-3/4			19.08				
-10-2000		2			21.80				
-10-2250		2-1/4			24.20				
-10-2500		2-1/2			26.50				
-10-2750		2-3/4			28.80				
-10-3000		3			31.10				
-10-3250		3-1/4			33.40				
-10-3500	3-1/2	35.70							
-10-3750	3-3/4	37.90							
-10-4000	4	40.10							

+ .010/- .010

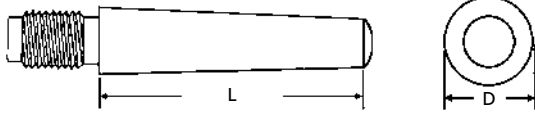
	DESCRIPTION	GENERAL USE	HOW TO IDENTIFY	APPLICATION
TPT	Solid cylindrical pin with a uniform taper that runs the entire length of the pin and is threaded at large end. These reusable pins work well in blind holes and can be removed by tightening down a hex nut.	 UNCOMMON	1. Verify solid tapered pin with threaded end. 2. Measure diameter (D). 3. Measure length (L). 4. Find the part in the chart above.	 Used to hold knob onto a shaft.
			TYPICAL PART NUMBER SEQUENCE: TPT-00-0500 is a #0 x 1/2" plain threaded tapered pin.	

PERFORMANCE RESULTS VARY. YOUR PIN SELECTION SHOULD BE MADE BASED ON INDIVIDUAL APPLICATION.

MOST SIZES AVAILABLE IMMEDIATELY • \$2 LINE REQUESTED • CALL FOR QUANTITY DISCOUNTS

AVAILABLE WITH OR WITHOUT NUT

BOX 232 • MINNEAPOLIS, KS • 67467



EXTERNAL THREADED

MANUFACTURER CROSS-REFERENCE

See also

AN386



TPT	Number	Length (L)	Nominal Diameter (D)	Thread Pitch	WEIGHT Lbs. per 100 Pieces	MATERIAL			
	NUMBER	LENGTH				Plain "TPT-"	Plain with Nut "TPTN-"	Stainless "TPTS-"	SS with Nut "TPTSN-"
	10	4-1/4	.704	5/8-18	42.20				
		4-1/2			44.30				
		4-3/4			46.40				
		5			48.40				
		5-1/4			50.40				
		5-1/2			52.30				
		5-3/4			54.20				
		6			56.00				
		6-1/4			57.80				
		6-1/2			59.60				
		6-3/4			61.30				
	7	63.00							
	11	1-1/4	.858	3/4-16	28.00				
		1-1/2			32.00				
		1-3/4			36.00				
		2			40.00				
		2-1/4			44.00				
		2-1/2			48.00				
		2-3/4			52.00				
		3			56.00				
		3-1/4			60.00				
		3-1/2			64.00				
		3-3/4			68.00				
		4			72.00				
		4-1/4			76.00				
		4-1/2			80.00				
		4-3/4			84.00				
		5			88.00				
		5-1/4			92.00				
		5-1/2			96.00				
		5-3/4			100.00				
		6			104.00				
	7	120.00							
	8	136.00							
	9	152.00							
	10	168.00							
	12	2	1.030	7/8-14	52.25				
		2-1/4			57.48				
		2-1/2			62.70				
		2-3/4			67.93				
		3			73.15				

+ .010/- .010

TAPER PIN REAMERS

Page 290

ASSORTMENTS BEGIN

Page 286

MOST SIZES AVAILABLE IMMEDIATELY • \$2 LINE REQUESTED • CALL FOR QUANTITY DISCOUNTS

All manufacturer names and numbers are for identification purposes only. In no way are we implying that our parts were made by the manufacturers listed above. Prices, materials, tolerances, and grades subject to change without notice.

TAPERED PINS

785-392-3017 FAX 785.392.2845

REVISED 06-04
www.huyett.com

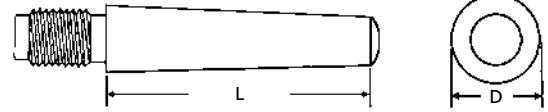
AVAILABLE WITH OR WITHOUT NUT



EXTERNAL THREADED

MANUFACTURER CROSS-REFERENCE

See also AN386



TPT	Nominal (D)	Length (L)	Number	Thread Pitch	WEIGHT Lbs. per 100 Pieces	MATERIAL				
	DIAMETER	LENGTH				"Alloy"	Plain with Nut	Stainless "TPTS-"	SS with Nut	"TPTN-"
-12-3250	12	3-1/4	1.030	7/8-14	78.38					
-12-3500		3-1/2			83.60					
-12-3750		3-3/4			88.83					
-12-4000		4			94.05					
-12-4250		4-1/4			99.28					
-12-4500		4-1/2			104.50					
-12-4750		4-3/4			109.73					
-12-5000		5			114.95					
-12-5250		5-1/4			120.18					
-12-5500		5-1/2			125.40					
-12-5750	13	5-3/4	1.239	7/8-14	130.63					
-12-6000		6			135.85					
-12-7000		7			156.73					
-12-8000		8			177.61					
-12-9000		9			198.49					
-12-10000		10			219.37					
-13-4000		4			105.75					
-13-5000		5			129.25					
-13-6000		6			152.75					
-13-7000		7			176.23					
-13-8000	14	8	1.521	1-1/8-12	199.71					
-13-9000		9			223.19					
-13-10000		10			246.67					
-14-4000		4			165.60					
-14-4250		4-1/4			174.80					
-14-4500		4-1/2			184.00					
-14-4750		4-3/4			193.20					
-14-5000		5			199.71					
-14-5250		5-1/4			202.40					
-14-5500		5-1/2								
-14-5750	5-3/4									
-14-6000	6									
-14-7000	7									
-14-8000	8									
-14-9000	9									
-14-10000	10									

+0.010/-0.010

	DESCRIPTION	GENERAL USE	HOW TO IDENTIFY	APPLICATION
TPT	Solid cylindrical pin with a uniform taper that runs the entire length of the pin and is threaded at large end. These reusable pins work well in blind holes and can be removed by tightening down a hex nut. EXTERNAL THREADED	UNCOMMON	1. Verify solid tapered pin with threaded end. 2. Measure diameter (D). 3. Measure length (L). TYPICAL PART NUMBER SEQUENCE: TPT-00-0500 is a #0 x 1/2" plain threaded tapered pin.	Rigid coupling joint.

PERFORMANCE RESULTS VARY. YOUR PIN SELECTION SHOULD BE MADE BASED ON INDIVIDUAL APPLICATION.

TAPER PIN REAMERS
 Page 290

ASSORTMENTS BEGIN
 Page 286

MOST SIZES AVAILABLE IMMEDIATELY • \$2 LINE REQUESTED • CALL FOR QUANTITY DISCOUNTS