



AZTEC

PREMIUM LIFTING HARDWARE

**NOW SHIPPING FROM
TWO U.S. LOCATIONS**



GENERAL INFORMATION

WHO WE ARE

Huyett is a low-overhead manufacturer, master distributor, and importer of industrial fasteners & components, and premium lifting hardware. Our corporate office is located just 50 miles from the geographic center of the United States. With multiple warehouse locations, we are two days shipping time from 60% of the country.

We were founded by a German immigrant over 100 years ago in a tin shed located in a place some call the Great American Desert. The experience of trying to work the land and make a life here has been formative to our culture and we are here to serve you.

Huyett has a complete machine shop and manufactures an array of non-threaded fasteners and special assemblies. Our manufacturing facility is equipped to make exotic material products in Monel™, Inconel™, Carpenter™ 20, and other alloys.



WHAT WE DO

We serve our customers by reducing total costs through a combination of competitive sourcing, value-added services, and an inventory of more than 100,000 unique fasteners. We save our customers time and money by offering the opportunity to quote, order, ship, and receive a wide variety of parts on one purchase order.

We serve our partners by providing programs and opportunities to facilitate the achievement of business and professional goals. We have forged relationships with key manufacturers on a worldwide basis so that you can receive the benefit of global sourcing on standard items, and cost effective solutions on short run parts that are made right here in the USA.

We serve our employees by creating a work environment that is productive, exciting, and full of possibility. We help our employees meet their professional and personal goals through training programs, mentoring, and “employer of choice” pay and benefits.

We serve our community by working with organizations and individuals to create solutions for their local needs. We are committed to helping education, family-life, and local nonprofit organizations in a manner that improves quality of life.

HOW WE DO IT

With over 100,000 parts and a complete machine shop to manufacture special orders, you can consolidate items normally purchased from multiple suppliers into one box.

- In stock orders ship next business day.
- Business hours: 7:00 a.m. to 5:00 p.m. CST, Monday thru Friday.
- All parts ship from U.S. Locations, on one PO, along with the “Pack List That Will Change Your Life.™ ”



GENERAL INFORMATION

TABLE OF CONTENTS

General Information

Who We Are, What We Do, How We Do it	2
Safety Information	4

Lifting Eye Bolts

Lifting Eye Bolts, Shoulder Pattern	6
Metric DIN 580 Lifting Eye Bolts, Shoulder Pattern	6
SS Lifting Eye Bolts, Shoulder Pattern	7
SS Metric DIN 580, Shoulder Pattern	7
Lifting Eye Bolts – HDG, Shoulder Pattern	8
Lifting Eye Bolts – Zinc, Shoulder Pattern	8
Lifting Eye Bolts, Plain Pattern	9
Bent Wire Eye Bolts, Turned	9

Lifting Eye Nuts

Lifting Eye Nuts – Self-Colored	10
SS Lifting Eye Nuts	10
SS Metric DIN 582 Lifting Eye Nuts	10
Lifting Eye Nuts – HDG	11
Metric DIN 582 Lifting Eye Nuts	11

Nut Eye Bolts

Nut Eye Bolts, Shoulder Pattern	12
SS Nut Eye Bolts, Shoulder Pattern	12
Nut Eye Bolts, Plain Pattern	13
SS Nut Eye Bolts, Plain Pattern	14

Screw Eye Bolts

Screw Eye Bolts, Shoulder Pattern	14
---	----

Swivel Hoist Rings

Swivel Hoist Rings	15
Metric Swivel Hoist Rings	15

Turnbuckles

Turnbuckles, Eye/Eye	16
SS Turnbuckles, Eye/Eye	17
Turnbuckles, Eye/Hook	17
Turnbuckles, Hook/Hook	18
Turnbuckles, Eye/Jaw	19
Turnbuckles, Jaw/Jaw	20
SS Turnbuckles, Eye/Jaw	21
SS Turnbuckles, Jaw/Jaw	21
Turnbuckles, Stub/Stub	22
Turnbuckles – Self-Colored, Bodies	23
Turnbuckles – HDG, Bodies	24
SS Turnbuckles, Bodies	25
Turnbuckle Ends – HDG, Hook	25
Turnbuckle Ends – HDG, Eye	26
SS Turnbuckle Ends, Eye	26
Turnbuckle Ends – HDG, Jaw	27
SS Turnbuckle Ends, Jaw	27
Die Cast Turnbuckles, Eye/Eye	28
Die Cast Turnbuckles, Eye/Hook	28
Die Cast Turnbuckles, Hook/Hook	28

Rod Ends

Rod Ends, Blank or Machined to Order	29
--	----

Clevis/Yokes

Adjustable Yoke Ends	30
Yoke Pins/Clevis Pins	30
Blank Clevises	31
Finished Clevises – In Stock	31

Shackles/Hooks

SS Swivel, Eye/Eye	32
Swivel, Eye/Eye	32
Swivel, Eye/Jaw	32
Anchor Shackles – HDG, Round Pin	33
Anchor Shackles – Self-Colored, Screw Pin	33
Anchor Shackles – HDG, Screw Pin	34
SS Anchor Shackles, Screw Pin	34
Anchor Shackles, Safety Bolt	35
SS Anchor Shackles, Safety Bolt	35
Chain Shackles, Screw Pin	36
SS Chain Shackles, Screw Pin	36
Double Clevis Link, Twin	37
Master Link, Pear Shaped	37
Alloy Master Link, Oblong	37
Eye Grab Hook, Grade 43	38
Clevis Grab Hook, Grade 43	38
Clevis Grab Hook, Grade 70	38
Eye Slip Hook, Grade 43	39
Clevis Slip Hook, Grade 43	39
Clevis Slip Hook, Grade 70	39
Clevis Slip Hook w/ Safety Latch, Grade 43	40
Clevis Slip Hook w/ Safety Latch, Grade 70	40

Rope/Chain Hardware

Chain – Proof Coil, Grade 30	41
Chain Binders, Grade 70	41
Chain Repair Link, Grade 30	41
Cold Shut, Grade 30	41
Hooks, Snap	42
SS Hooks, Snap	42
Links, Quick	43
SS Links, Quick	43
Wire Rope Clip, Forged	44
Wire Rope Clip, Malleable	44
SS Wire Rope Clip, Cast	45
Fist Grip Clip, Forged	45
Aluminum Sleeves, 6063 – Crimp	46
SS Sleeves, Crimp	46
Wire Rope Thimble	47
SS Wire Rope Thimble	47

For more details on available finishes and machining capabilities visit Huyett.com/Aztec

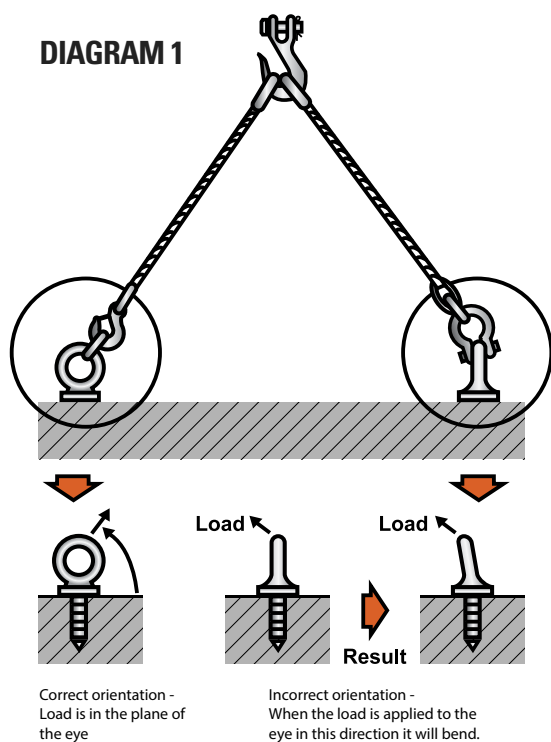
SAFETY INFORMATION

It is possible to make a lift, suspend certain objects, or construct barriers using a wide variety of hardware options. With so many choices available, how do you make sure you're using the right hardware for the job? As a supplier to the wholesale distributor market, Aztec Premium Lifting Hardware does not regulate or provide engineering guidance over the selection of specific hardware for specific uses, and our distributors have no control as to how our products are used.

To ensure your end user customer selects the right hardware for the job, and is prepared to use this hardware correctly, we recommend consultation of industry publications relating to specifications, standards, and best practices for successful rigging and/or lifting.

Excellent information can be obtained through US Government publications regarding: Crane, Hoist, and Rigging Safety (www.usa.gov) and (www.osha.gov); DOE-STD-1090-2007 regarding Hoisting and Rigging Standards (www.eh.doe.gov).

The following charts and information will assist you:



1. It is important to ensure proper alignment of the installed eye bolts before lifting. Referring to **DIAGRAM 1**: an eye bolt can be turned $\frac{1}{4}$ turn to ensure proper lifting angles. Never pull across the flats of an eye bolt.
2. **TABLE 1** makes reference to the safe working load for shoulder pattern eye bolts. Machinery Lifting Eye Bolts in this catalog, and other catalogs to which you may refer, could show a higher Working Load Limit (WLL), or Rated Capacity (RC). Lifting Eye Bolts have a safety factor of five times the WLL/RC with proper seating and full thread engagement.
3. The RC of an eye bolt is determined from a straight, zero degree, lift. As **DIAGRAM 2** refers, a significant reduction in capacity is experienced any time a lift changes from zero degrees. Although the ANSI design specification denotes a working load capability for a 90° lift, we do not recommend using a lifting angle beyond 45° . When the angle of a lift is beyond 45° consider using a Swivel Hoist Ring.



Your **Account Order History** at huyett.com includes:



Order Status



Your Favorites



Order Tracking Info



Quantity Breaks



Expected Ship Date



Customer Specific Pricing



Visit our Knowledge Vault for catalogs, product training, and best practices.

* Some Exclusions Apply

SAFETY INFORMATION

TABLE 1: SAFE WORKING LOAD FOR CARBON STEEL SHOULDERED EYE BOLTS (ANSI/ASME B18.15)

NOMINAL SIZE	ID OF EYE (INCH)	SAFE WORKING LOAD PER SHOULDERED EYE BOLT (LBS.)			
		VERTICAL	30° FROM VERTICAL	60° FROM VERTICAL	90° FROM VERTICAL
1/4"	.69"	400 lbs.	75 lbs.	Not Recommended	Not Recommended
3/8"	.94"	1,000 lbs.	400 lbs.	220 lbs.	180 lbs.
1/2"	1.12"	1,840 lbs.	850 lbs.	520 lbs.	440 lbs.
5/8"	1.31"	2,940 lbs.	1,410 lbs.	890 lbs.	740 lbs.
3/4"	1.44"	4,340 lbs.	2,230 lbs.	1,310 lbs.	1,140 lbs.
1"	1.69"	7,880 lbs.	3,850 lbs.	2,630 lbs.	2,320 lbs.
1-1/4"	2.12"	12,600 lbs.	6,200 lbs.	4,125 lbs.	3,690 lbs.
1-1/2"	2.44"	18,260 lbs.	9,010 lbs.	6,040 lbs.	5,460 lbs.
2"	3.06"	32,500 lbs.	15,970 lbs.	10,910 lbs.	9,740 lbs.

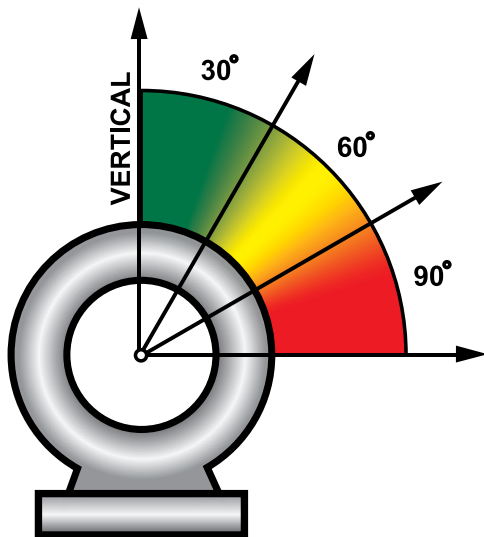


DIAGRAM 2

- Rated capacities throughout this catalog assume a working temperature range between 30° and 275°F (-1° and 135°C), any use outside of these temperatures may not provide the same performance as listed.
- Always ensure the RC of complimenting lifting components are in line with your lift requirements. Shackles, chain, eye bolts, pulleys and hooks must all be of the proper WLL/RC for the lift.
- All hardware items should be inspected before and after each use. Lifting hardware showing signs of wear, thread damage, bending, elongation or defects of any kind should be replaced. To avoid the possibility of reusing defective hardware, defective items should be destroyed by cutting through the connecting area (i.e.: for eye bolts: cut through the eye portion. For shackles: cut through the side.)

When You Choose Huyett, You Get...



A Supply Chain Partner



Market Intelligence



Global Procurement



Inventory Management Programs



Custom Manufacturing



Collaborative Engineering



E-Commerce



Best-In-Class Brands



Performance Reviews



Custom Solutions

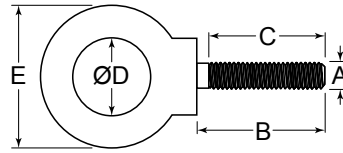


Blind Dropships

LIFTING EYE BOLTS

LIFTING EYE BOLTS

SHOULDER PATTERN



Design: Shoulder Pattern
 Process: Forged
 Threads: UNC
 Material: 1045 Carbon Steel
 Finish: Self-Colored (other finishes available online)

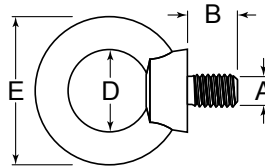
LIFTING EYE BOLTS

ITEM NUMBER	SHANK DIAMETER (A)	SHANK LENGTH (B)	ID (D)	OD (E)	RATED CAPACITY	WEIGHT/PC. (Approx.)
MEB014-2A	1/4"	1"	3/4"	1-1/8"	600 lbs.	.05 lbs.
MEB516-2A	5/16"	1-1/8"	7/8"	1-3/8"	1,000 lbs.	.09 lbs.
MEB038-2A	3/8"	1-1/4"	1"	1-5/8"	1,500 lbs.	.15 lbs.
MEB716	7/16"	1-3/8"	1-1/16"	1-13/16"	1,800 lbs.	.29 lbs.
MEB012-2A	1/2"	1-1/2"	1-3/16"	2-15/16"	2,500 lbs.	.28 lbs.
MEB916	9/16"	1-5/8"	1-1/4"	2-5/16"	3,500 lbs.	.44 lbs.
MEB058-2A	5/8"	1-3/4"	1-3/8"	2-3/8"	4,200 lbs.	.55 lbs.
MEB034-2A	3/4"	2"	1-1/2"	2-3/4"	5,500 lbs.	.96 lbs.
MEB078	7/8"	2-1/4"	1-3/4"	3-1/4"	7,500 lbs.	1.54 lbs.
MEB001	1"	2-1/2"	2"	3-3/4"	10,000 lbs.	2.38 lbs.
MEB118	1-1/8"	2-3/4"	2"	4-3/16"	12,000 lbs.	3.20 lbs.
MEB114	1-1/4"	3"	2-1/2"	4-1/2"	16,000 lbs.	4.00 lbs.
MEB112	1-1/2"	3-1/2"	3"	5-1/2"	22,000 lbs.	7.20 lbs.

Manufactured to meet or exceed rated capacities as specified within ASME B18.15.

METRIC DIN 580

SHOULDER PATTERN



Design: DIN Specification
 Process: Forged
 Threads: Metric Coarse
 Material: 1015 Carbon Steel
 Finish: Self-Colored

ITEM NUMBER	SHANK DIAMETER (A)	THREAD PITCH	SHANK LENGTH (B)	ID (D)	OD (E)	RATED CAPACITY	WEIGHT/PC. (Approx.)
DIN006	6 mm	1.00 mm	13 mm	20 mm	36 mm	70 kgs.	0.04 kgs.
DIN008	8 mm	1.25 mm	13 mm	20 mm	36 mm	140 kgs.	0.06 kgs.
DIN010	10 mm	1.50 mm	17 mm	25 mm	45 mm	230 kgs.	0.11 kgs.
DIN012	12 mm	1.75 mm	21 mm	30 mm	54 mm	340 kgs.	0.15 kgs.
DIN014	14 mm	2.00 mm	27 mm	35 mm	63 mm	490 kgs.	0.18 kgs.
DIN016	16 mm	2.00 mm	27 mm	36 mm	64 mm	700 kgs.	0.28 kgs.
DIN018	18 mm	2.50 mm	30 mm	40 mm	72 mm	800 kgs.	0.36 kgs.
DIN020	20 mm	2.50 mm	30 mm	40 mm	72 mm	1,200 kgs.	0.45 kgs.
DIN022	22 mm	2.50 mm	33 mm	45 mm	81 mm	1,500 kgs.	0.67 kgs.
DIN024	24 mm	3.00 mm	36 mm	50 mm	90 mm	1,800 kgs.	0.87 kgs.
DIN027	27 mm	3.00 mm	40 mm	55 mm	99 mm	2,500 kgs.	1.20 kgs.
DIN030	30 mm	3.50 mm	45 mm	60 mm	108 mm	3,600 kgs.	1.66 kgs.
DIN033	33 mm	3.50 mm	50 mm	65 mm	117 mm	4,300 kgs.	2.45 kgs.
DIN036	36 mm	4.00 mm	54 mm	70 mm	126 mm	5,100 kgs.	5.80 kgs.
DIN042	42 mm	4.50 mm	63 mm	80 mm	144 mm	7,000 kgs.	6.30 kgs.
DIN048	48 mm	5.00 mm	68 mm	90 mm	166 mm	8,600 kgs.	8.80 kgs.
DIN056	56 mm	5.50 mm	78 mm	100 mm	184 mm	11,500 kgs.	11.50 kgs.
DIN064	64 mm	6.00 mm	90 mm	110 mm	206 mm	16,000 kgs.	16.00 kgs.
DIN080	80 mm	6.00 mm	112 mm	160 mm	296 mm	28,000 kgs.	28.00 kgs.
DIN100	100 mm	6.00 mm	130 mm	180 mm	330 mm	38,000 kgs.	40.00 kgs.

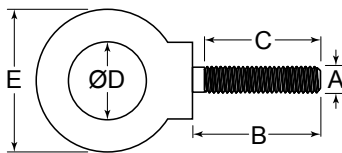
Manufactured to European DIN standards.

⚠ See Safe Lifting Chart on page 5. All rated capacities consider a straight vertical lift. Use CAUTION when lifting. Any angle beyond vertical (zero degree) will reduce the rated capacity. Full shank thread to shoulder.

LIFTING EYE BOLTS

STAINLESS STEEL LIFTING EYE BOLTS

SHOULDER PATTERN



Design: Shoulder Pattern
 Process: Cast
 Threads: UNC
 Material: 304 Stainless Steel
 Finish: Polished

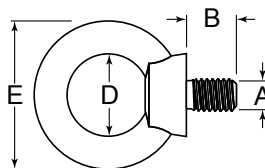
ITEM NUMBER	SHANK DIAMETER (A)	SHANK LENGTH (B)	ID (D)	OD (E)	RATED CAPACITY	WEIGHT/PC. (Approx.)
SSS014	1/4"	1"	3/4"	1-1/8"	500 lbs.	.05 lbs.
SSS516	5/16"	1-1/8"	7/8"	1-3/8"	800 lbs.	.09 lbs.
SSS038	3/8"	1-1/4"	1"	1-5/8"	1,200 lbs.	.15 lbs.
SSS012	1/2"	1-1/2"	1-3/16"	1-15/16"	2,100 lbs.	.28 lbs.
SSS058	5/8"	1-3/4"	1-3/8"	2-3/8"	3,200 lbs.	.55 lbs.
SSS034	3/4"	2"	1-1/2"	2-3/4"	4,500 lbs.	.96 lbs.

Manufactured to provide maximum corrosion resistance.

LIFTING EYE BOLTS

STAINLESS STEEL METRIC DIN 580

SHOULDER PATTERN



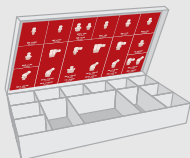
Design: DIN Specification
 Process: Cast
 Threads: Metric Coarse
 Material: 304 Stainless Steel
 Finish: Polished

ITEM NUMBER	SHANK DIAMETER (A)	THREAD PITCH	SHANK LENGTH (B)	ID (D)	OD (E)	RATED CAPACITY	WEIGHT/PC. (Approx.)
SSD006	6 mm	1.00 mm	13 mm	20 mm	36 mm	65 kgs.	0.03 kgs.
SSD008	8 mm	1.25 mm	13 mm	20 mm	36 mm	130 kgs.	0.05 kgs.
SSD010	10 mm	1.50 mm	17 mm	25 mm	45 mm	216 kgs.	0.07 kgs.
SSD012	12 mm	1.75 mm	21 mm	30 mm	54 mm	325 kgs.	0.11 kgs.
SSD016	16 mm	2.00 mm	27 mm	35 mm	63 mm	675 kgs.	0.25 kgs.
SSD020	20 mm	2.50 mm	30 mm	40 mm	72 mm	1,200 kgs.	0.42 kgs.
SSD024	24 mm	3.00 mm	36 mm	50 mm	90 mm	1,850 kgs.	1.05 kgs.

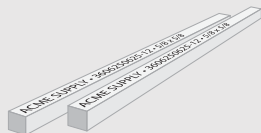
Manufactured to European DIN standards.

CUSTOM SOLUTIONS

Let us bag, seal, and label parts in the quantities you want, or create a custom assortment branded with your logo.



Custom Assortments



Custom Marking



Custom Packaging



The Pack List That Will Change Your Life™



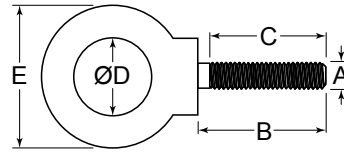
Customized Drop Ship Pack List

⚠ See Safe Lifting Chart on page 5. All rated capacities consider a straight vertical lift. Use CAUTION when lifting. Any angle beyond vertical (zero degree) will reduce the rated capacity. Full shank thread to shoulder.

LIFTING EYE BOLTS

LIFTING EYE BOLTS - HOT DIPPED GALVANIZED

SHOULDER PATTERN



Design: Shoulder Pattern
 Process: Forged
 Threads: UNC
 Material: 1045 Carbon Steel
 Finish: Hot Dipped Galvanized

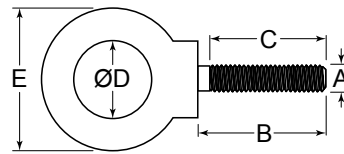
LIFTING EYE BOLTS

ITEM NUMBER	SHANK DIAMETER (A)	SHANK LENGTH (B)	ID (D)	OD (E)	RATED CAPACITY	WEIGHT/PC. (Approx.)
MEBG14	1/4"	1"	3/4"	1-1/8"	600 lbs.	.06 lbs.
MEBG56	5/16"	1-1/8"	7/8"	1-3/8"	1,000 lbs.	.10 lbs.
MEBG38	3/8"	1-1/4"	1"	1-5/8"	1,500 lbs.	.16 lbs.
MEBG12	1/2"	1-1/2"	1-3/16"	1-15/16"	2,500 lbs.	.30 lbs.
MEBG58	5/8"	1-3/4"	1-3/8"	2-3/8"	4,200 lbs.	.59 lbs.
MEBG34	3/4"	2"	1-1/2"	2-3/4"	5,500 lbs.	1.02 lbs.
MEBG78	7/8"	2-1/4"	1-3/4"	3-1/4"	7,500 lbs.	1.64 lbs.
MEBG01	1"	2-1/2"	2"	3-3/4"	10,000 lbs.	2.53 lbs.
MEBG11	1-1/4"	3"	2-1/2"	4-1/2"	16,000 lbs.	4.24 lbs.

Manufactured to meet or exceed rated capacities as specified within ASME B18.15 with additional coating for increased corrosion resistance. Galvanized Eye Bolts may require oversized tapping of the mating part, see below for details.

LIFTING EYE BOLTS - ZINC

SHOULDER PATTERN



Design: Shoulder Pattern
 Process: Forged
 Threads: UNC
 Material: 1045 Carbon Steel
 Finish: Zinc

ITEM NUMBER	SHANK DIAMETER (A)	SHANK LENGTH (B)	ID (D)	OD (E)	RATED CAPACITY	WEIGHT/PC. (Approx.)
MEB014-ZP	1/4"	1"	3/4"	1-1/8"	600 lbs.	.05 lbs.
MEB516-ZP	5/16"	1-1/8"	7/8"	1-3/8"	1,000 lbs.	.09 lbs.
MEB038-ZP	3/8"	1-1/4"	1"	1-5/8"	1,500 lbs.	.15 lbs.
MEB012-ZP	1/2"	1-1/2"	1-3/16"	1-15/16"	2,500 lbs.	.28 lbs.
MEB058-ZP	5/8"	1-3/4"	1-3/8"	2-3/8"	4,200 lbs.	.55 lbs.
MEB034-ZP	3/4"	2"	1-1/2"	2-3/4"	5,500 lbs.	.96 lbs.
MEB078-ZP	7/8"	2-1/4"	1-3/4"	3-1/4"	7,500 lbs.	1.54 lbs.
MEB001-ZP	1"	2-1/2"	2"	3-3/4"	10,000 lbs.	2.38 lbs.

Manufactured to meet or exceed rated capacities as specified within ASME B18.15 with additional zinc plating for increased corrosion resistance.

NEEDING AN OVERSIZE TAP?

ASTM A563 provides standard oversize internal threads for use with galvanized external threads.

The purpose of creating oversize internal threads is to allow for coating build up on the externally threaded mating item.

Don't see the thread size you're looking for?

Give our Sales Team a call today.

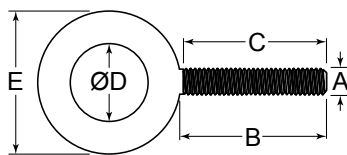
785-392-3017

THREAD SIZE	OVERSIZE AMOUNT
1/4"-20	+.016
5/16"-18	+.017
3/8"-16	+.017
7/16"-14	+.018
1/2"-13	+.018
9/16"-12	+.020
5/8"-11	+.020
3/4"-10	+.020
7/8"-9	+.022
1"-8	+.024

LIFTING EYE BOLTS

LIFTING EYE BOLTS

PLAIN PATTERN



Design: Plain Pattern
 Process: Forged
 Threads: UNC
 Material: 1045 Carbon Steel
 Finish: Self-Colored (other finishes available online)

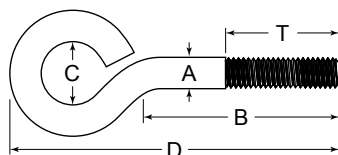
ITEM NUMBER	THREAD SIZE/PITCH (A)	SHANK LENGTH (B)	THREAD LENGTH (C)	ID (D)	OD (E)	RATED CAPACITY	WEIGHT/PC. (Approx.)
USP014	1/4"-20	1-1/8"	1"	3/4"	1-3/16"	600 lbs.	.04 lbs.
USP516	5/16"-18	1-1/4"	1-1/8"	7/8"	1-7/16"	1,000 lbs.	.09 lbs.
USP038	3/8"-16	1-7/16"	1-1/4"	1"	1-11/16"	1,500 lbs.	.13 lbs.
USP012	1/2"-13	1-11/16"	1-1/2"	1-3/16"	2-1/8"	2,500 lbs.	.26 lbs.
USP058	5/8"-11	1-15/16"	1-3/4"	1-3/8"	2-1/2"	4,200 lbs.	.51 lbs.
USP034	3/4"-10	2-3/16"	2"	1-1/2"	2-13/16"	5,500 lbs.	.90 lbs.
USP078	7/8"-9	2-7/16"	2-1/4"	1-3/4"	3-1/4"	7,500 lbs.	1.48 lbs.
USP001	1"-8	2-3/4"	2-1/2"	2"	3-3/4"	10,000 lbs.	2.27 lbs.
USP114	1-1/4"-7	3-1/16"	3"	2-1/2"	4-1/2"	16,000 lbs.	3.75 lbs.

Manufactured to meet or exceed rated capacities as specified within ASME B18.15.

LIFTING EYE BOLTS

BENT WIRE EYE BOLTS

TURNED



Design: Bent Wire
 Process: Turned
 Threads: RH/UNC
 Material: Low Carbon Steel
 Finish: Zinc Clear Trivalent Hex



ITEM NUMBER	SHANK DIAMETER (A)	SHANK LENGTH (B)	ID EYE (C)	OVERALL LENGTH (D)	THREAD LENGTH (T)	WORKING LOAD LIMIT	WEIGHT/PC. (Approx.)
BWT025-20-100-087ZP	1/4"	1"	1/2"	2"	7/8"	74 lbs.	.04 lbs.
BWT025-20-150-125ZP	1/4"	1-1/2"	1/2"	2-1/2"	1-1/4"	74 lbs.	.04 lbs.
BWT025-20-200-125ZP	1/4"	2"	1/2"	3"	1-1/4"	74 lbs.	.05 lbs.
BWT025-20-400-250ZP	1/4"	4"	1/2"	5"	2-1/2"	74 lbs.	.08 lbs.
BWT025-20-600-400ZP	1/4"	6"	1/2"	7"	4"	74 lbs.	.09 lbs.
BWT031-18-200-125ZP	5/16"	2"	5/8"	3-1/8"	1-1/4"	74 lbs.	.09 lbs.
BWT038-16-100-087ZP	3/8"	1"	3/4"	2-1/2"	7/8"	144 lbs.	.12 lbs.
BWT038-16-150-113ZP	3/8"	1-1/2"	3/4"	3"	1-1/8"	144 lbs.	.13 lbs.
BWT038-16-200-125ZP	3/8"	2"	3/4"	3-1/2"	1-1/4"	144 lbs.	.15 lbs.
BWT038-16-300-150ZP	3/8"	3"	3/4"	4-1/2"	1-1/2"	144 lbs.	.17 lbs.
BWT038-16-400-250ZP	3/8"	4"	3/4"	5-1/2"	2-1/2"	144 lbs.	.21 lbs.
BWT038-16-600-400ZP	3/8"	6"	3/4"	7-1/2"	4"	144 lbs.	.24 lbs.
BWT050-13-200-150ZP	1/2"	2"	1"	4"	1-1/2"	298 lbs.	.33 lbs.
BWT050-13-400-250ZP	1/2"	4"	1"	6"	2-1/2"	298 lbs.	.41 lbs.
BWT050-13-600-400ZP	1/2"	6"	1"	8"	4"	298 lbs.	.50 lbs.

LIFTING IQ
 INSTANT QUOTES + ONLINE CHECKOUT

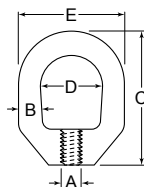
?S
 CHECK OUT OUR
FAQ

Bent Wire Eye Bolts are not recommended for lifting applications. See Lifting Eye Bolts on page 6 for lifting applications. Rated capacity refers to a straight (zero degree) pull. Pulling at an angle reduces the rated capacity significantly.

LIFTING EYE NUTS

EYE NUT - SELF-COLORED

FORGED



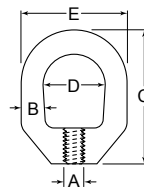
Design: Standard Duty
 Process: Forged
 Threads: UNC
 Material: 1045 Carbon Steel
 Finish: Self-Colored

ITEM NUMBER	THREAD SIZE/PITCH (A)	BALL DIAMETER (B)	HEIGHT (C)	ID (D)	OD (E)	RATED CAPACITY	WEIGHT/PC. (Approx.)
ENS014	1/4"-20	1/4"	1-11/16"	3/4"	1-1/4"	520 lbs.	.09 lbs.
ENS516	5/16"-18	1/4"	1-11/16"	3/4"	1-1/4"	850 lbs.	.09 lbs.
ENS038	3/8"-16	5/16"	2-1/16"	1"	1-5/8"	1,250 lbs.	.17 lbs.
ENS716	7/16"-14	3/8"	2-1/2"	1-1/4"	2"	1,700 lbs.	.28 lbs.
ENS012	1/2"-13	3/8"	2-9/16"	1-1/4"	2"	2,250 lbs.	.28 lbs.
ENS058	5/8"-11	1/2"	3-1/4"	1-1/2"	2-1/2"	3,600 lbs.	.60 lbs.
ENS034	3/4"-10	5/8"	3-15/16"	1-3/4"	3"	5,200 lbs.	1.00 lbs.
ENS078	7/8"-9	3/4"	4-3/8"	2"	3-1/2"	7,200 lbs.	1.65 lbs.
ENS001	1"-8	7/8"	5-1/8"	2-1/4"	4"	10,000 lbs.	2.69 lbs.
ENS114	1-1/4"-7	1"	5-7/8"	2-1/2"	4-1/2"	15,500 lbs.	3.87 lbs.

LIFTING EYE NUTS

STAINLESS STEEL EYE NUT

CAST

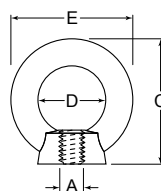


Design: Standard Duty
 Process: Cast
 Threads: UNC
 Material: 304 Stainless Steel
 Finish: Polished

ITEM NUMBER	THREAD SIZE/PITCH (A)	BALL DIAMETER (B)	HEIGHT (C)	ID (D)	OD (E)	RATED CAPACITY	WEIGHT/PC. (Approx.)
SEN014	1/4"-20	1/4"	1-3/4"	3/4"	1-1/4"	260 lbs.	.09 lbs.
SEN516	5/16"-18	1/4"	1-3/4"	3/4"	1-1/4"	425 lbs.	.09 lbs.
SEN038	3/8"-16	5/16"	2-1/16"	1"	1-5/8"	625 lbs.	.17 lbs.
SEN012	1/2"-13	3/8"	2-1/2"	1-1/4"	2"	1,125 lbs.	.28 lbs.
SEN058	5/8"-11	1/2"	3-1/4"	1-1/2"	2-1/2"	1,800 lbs.	.60 lbs.
SEN034	3/4"-10	5/8"	3-15/16"	1-3/4"	3"	2,600 lbs.	1.00 lbs.

STAINLESS STEEL METRIC DIN 582 EYE NUT

CAST



Design: DIN Specification
 Process: Cast
 Threads: Metric Coarse
 Material: 304 Stainless Steel
 Finish: Polished

ITEM NUMBER	THREAD DIAMETER (A)	THREAD PITCH	HEIGHT (C)	ID (D)	OD (E)	RATED CAPACITY	WEIGHT/PC. (Approx.)
SSDN06	6 mm	1.00 mm	27 mm	15 mm	27 mm	70 kgs.	0.05 kgs.
SSDN08	8 mm	1.25 mm	36 mm	20 mm	36 mm	140 kgs.	0.05 kgs.
SSDN10	10 mm	1.50 mm	45 mm	25 mm	45 mm	230 kgs.	0.09 kgs.
SSDN12	12 mm	1.75 mm	54 mm	30 mm	53 mm	340 kgs.	0.16 kgs.
SSDN16	16 mm	2.00 mm	62 mm	36 mm	64 mm	700 kgs.	0.25 kgs.
SSDN20	20 mm	2.50 mm	71 mm	40 mm	72 mm	1,200 kgs.	0.36 kgs.
SSDN24	24 mm	3.00 mm	90 mm	50 mm	90 mm	1,800 kgs.	0.72 kgs.

10 Manufactured to European DIN standards.

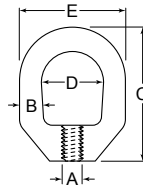


Proudly Serving Distributors Since 1899

LIFTING EYE NUTS

EYE NUT - HOT DIPPED GALVANIZED

FORGED



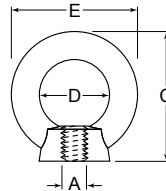
Design: Standard Duty
 Process: Forged
 Threads: UNC
 Material: 1045 Carbon Steel
 Finish: Hot Dipped Galvanized

ITEM NUMBER	THREAD SIZE/PITCH (A)	BALL DIAMETER (B)	HEIGHT (C)	ID (D)	OD (E)	RATED CAPACITY	WEIGHT/PC. (Approx.)
ENG014	1/4"-20	1/4"	1-11/16"	3/4"	1-1/4"	520 lbs.	.09 lbs.
ENG516	5/16"-18	1/4"	1-11/16"	3/4"	1-1/4"	850 lbs.	.09 lbs.
ENG038	3/8"-16	5/16"	2-1/16"	1"	1-5/8"	1,250 lbs.	.18 lbs.
ENG716	7/16"-14	3/8"	2-1/2"	1-1/4"	2"	1,700 lbs.	.29 lbs.
ENG012	1/2"-13	3/8"	2-9/16"	1-1/4"	2"	2,250 lbs.	.28 lbs.
ENG058	5/8"-11	1/2"	3-1/4"	1-1/2"	2-1/2"	3,600 lbs.	.60 lbs.
ENG034	3/4"-10	5/8"	3-15/16"	1-3/4"	3"	5,200 lbs.	1.00 lbs.
ENG078	7/8"-9	3/4"	4-3/8"	2"	3-1/2"	7,200 lbs.	1.65 lbs.
ENG001	1"-8	7/8"	5"	2-1/4"	4"	10,000 lbs.	2.69 lbs.
ENG118	1-1/8"-7	7/8"	5"	2-1/4"	4"	10,000 lbs.	2.70 lbs.
ENG114	1-1/4"-7	1"	5-7/8"	2-1/2"	4-1/2"	15,500 lbs.	3.87 lbs.
ENG112	1-1/2"-6	1-1/4"	7-1/16"	3-1/8"	5-5/8"	22,500 lbs.	6.78 lbs.
ENG002	2"-4.50	1-1/2"	10-1/8"	4-1/8"	7-1/8"	40,000 lbs.	14.60 lbs.

Oversize tap available, see page 8 for more details.

METRIC DIN 582 EYE NUT

FORGED



Design: DIN Specification
 Process: Forged
 Threads: Metric Coarse
 Material: 1015 Carbon Steel
 Finish: Self-Colored

ITEM NUMBER	THREAD DIAMETER (A)	THREAD PITCH	HEIGHT (C)	ID (D)	OD (E)	RATED CAPACITY	WEIGHT/PC. (Approx.)
DIN206	6 mm	1.00 mm	27 mm	20 mm	36 mm	70 kgs.	0.04 kgs.
DIN208	8 mm	1.25 mm	36 mm	20 mm	36 mm	140 kgs.	0.06 kgs.
DIN210	10 mm	1.50 mm	45 mm	25 mm	45 mm	230 kgs.	0.11 kgs.
DIN212	12 mm	1.75 mm	53 mm	30 mm	54 mm	340 kgs.	0.18 kgs.
DIN214	14 mm	2.00 mm	53 mm	35 mm	54 mm	490 kgs.	0.18 kgs.
DIN216	16 mm	2.00 mm	62 mm	36 mm	64 mm	700 kgs.	0.28 kgs.
DIN220	20 mm	2.50 mm	71 mm	40 mm	72 mm	1,200 kgs.	0.36 kgs.
DIN222	22 mm	2.50 mm	80 mm	45 mm	81 mm	1,500 kgs.	0.45 kgs.
DIN224	24 mm	3.00 mm	90 mm	50 mm	90 mm	1,800 kgs.	0.87 kgs.
DIN227	27 mm	3.00 mm	98 mm	55 mm	99 mm	2,500 kgs.	1.20 kgs.
DIN230	30 mm	3.50 mm	107 mm	60 mm	108 mm	3,600 kgs.	1.66 kgs.
DIN233	33 mm	3.50 mm	116 mm	65 mm	117 mm	4,300 kgs.	2.45 kgs.
DIN236	36 mm	4.00 mm	126 mm	70 mm	126 mm	5,100 kgs.	4.20 kgs.

Manufactured to European DIN standards.

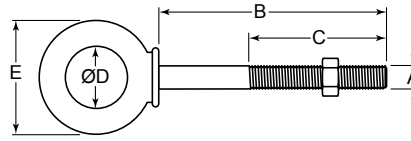
! Rated capacity relates to the eye nut capacity. The capacity/strength of the attachment stud must be considered. See Safe Lifting Chart on page 5. All rated capacities consider a straight vertical lift. Use CAUTION when lifting. Any angle beyond vertical (zero degree) will reduce the rated capacity. Forgings 5/16" and larger are marked to note ball diameter. Oversize tap or left hand threads available for some sizes. Contact sales@huyett.com for more information.

LIFTING EYE NUTS

NUT EYE BOLTS

NUT EYE BOLTS

SHOULDER PATTERN



Design: Shoulder Pattern
 Process: Forged
 Threads: UNC
 Material: 1045 Carbon Steel
 Finish: Hot Dipped Galvanized
 Nut: Installed

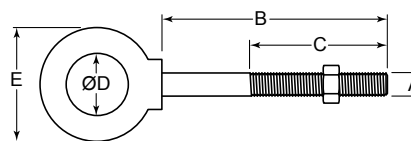


ITEM NUMBER	SHANK DIAMETER (A)	SHANK LENGTH (B)	THREAD LENGTH (C)	ID (D)	OD (E)	RATED CAPACITY	WEIGHT/PC. (Approx.)
NSP142	1/4"	2"	1-1/2"	1/2"	7/8"	500 lbs.	.07 lbs.
NSP144	1/4"	4"	2-1/2"	1/2"	7/8"	500 lbs.	.09 lbs.
NSP145	5/16"	2-1/4"	1-1/2"	5/8"	1-1/8"	800 lbs.	.13 lbs.
NSP146	5/16"	4-1/4"	2-1/2"	5/8"	1-1/8"	800 lbs.	.19 lbs.
NSP382	3/8"	2-1/2"	1-1/2"	3/4"	1-3/8"	1,200 lbs.	.21 lbs.
NSP384	3/8"	4-1/2"	2-1/2"	3/4"	1-3/8"	1,200 lbs.	.26 lbs.
NSP386	3/8"	6"	2-1/2"	3/4"	1-3/8"	1,200 lbs.	.30 lbs.
NSP123	1/2"	3-1/4"	1-1/2"	1"	1-3/4"	2,100 lbs.	.42 lbs.
NSP124	1/2"	4"	2"	1"	1-3/4"	2,100 lbs.	.41 lbs.
NSP126	1/2"	6"	3"	1"	1-3/4"	2,100 lbs.	.57 lbs.
NSP128	1/2"	8"	3"	1"	1-3/4"	2,100 lbs.	.71 lbs.
NSP121	1/2"	10"	3"	1"	1-3/4"	2,100 lbs.	.83 lbs.
NSP584	5/8"	4"	2"	1-1/4"	2-1/4"	3,200 lbs.	.69 lbs.
NSP586	5/8"	6"	3"	1-1/4"	2-1/4"	3,200 lbs.	1.03 lbs.
NSP588	5/8"	8"	3"	1-1/4"	2-1/4"	3,200 lbs.	1.20 lbs.
NSP580	5/8"	10"	3"	1-1/4"	2-1/4"	3,200 lbs.	1.34 lbs.
NSP582	5/8"	12"	4"	1-1/4"	2-1/4"	3,200 lbs.	1.53 lbs.
NSP344	3/4"	4-1/2"	2"	1-1/2"	2-3/4"	4,500 lbs.	1.45 lbs.
NSP346	3/4"	6"	3"	1-1/2"	2-3/4"	4,500 lbs.	1.68 lbs.
NSP348	3/4"	8"	3"	1-1/2"	2-3/4"	4,500 lbs.	1.68 lbs.
NSP341	3/4"	10"	3"	1-1/2"	2-3/4"	4,500 lbs.	1.92 lbs.
NSP342	3/4"	12"	4"	1-1/2"	2-3/4"	4,500 lbs.	2.16 lbs.
NSP345	3/4"	15"	5"	1-1/2"	2-3/4"	4,500 lbs.	2.54 lbs.
NSP785	7/8"	5"	2-1/2"	1-3/4"	3-1/4"	7,000 lbs.	2.25 lbs.
NSP106	1"	6"	3"	2"	3-3/4"	8,500 lbs.	3.66 lbs.
NSP109	1"	9"	4"	2"	3-3/4"	8,500 lbs.	4.23 lbs.
NSP408	1-1/4"	8"	4"	2-1/2"	4-1/2"	13,500 lbs.	6.50 lbs.
NSP412	1-1/4"	12"	4"	2-1/2"	4-1/2"	13,500 lbs.	7.95 lbs.

NUT EYE BOLT

STAINLESS STEEL NUT EYE BOLTS

SHOULDER PATTERN



Design: Shoulder Pattern
 Process: Cast
 Threads: UNC
 Material: 304 Stainless Steel
 Finish: Polished
 Nut: Installed

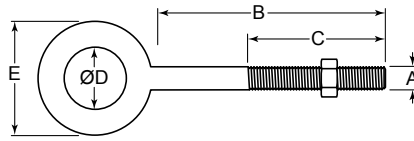


ITEM NUMBER	SHANK DIAMETER (A)	SHANK LENGTH (B)	THREAD LENGTH (C)	ID (D)	OD (E)	RATED CAPACITY	WEIGHT/PC. (Approx.)
SSS142	1/4"	2"	1-1/2"	1/2"	7/8"	500 lbs.	.07 lbs.
SSS144	1/4"	4"	2-1/2"	1/2"	7/8"	500 lbs.	.09 lbs.
SSS145	5/16"	2-1/4"	1-1/2"	5/8"	1-1/8"	800 lbs.	.13 lbs.
SSS146	5/16"	4-1/4"	2-1/2"	5/8"	1-1/8"	800 lbs.	.19 lbs.
SSS382	3/8"	2-1/2"	1-1/2"	3/4"	1-3/8"	1,200 lbs.	.21 lbs.
SSS384	3/8"	4-1/2"	2-1/2"	3/4"	1-3/8"	1,200 lbs.	.25 lbs.
SSS386	3/8"	6"	2-1/2"	3/4"	1-3/8"	1,200 lbs.	.27 lbs.
SSS123	1/2"	3-1/4"	1-1/2"	1"	1-3/4"	2,100 lbs.	.43 lbs.
SSS126	1/2"	6"	3"	1"	1-3/4"	2,100 lbs.	.57 lbs.
SSS584	5/8"	4"	2"	1-1/4"	2-1/4"	3,200 lbs.	.68 lbs.
SSS586	5/8"	6"	3"	1-1/4"	2-1/4"	3,200 lbs.	1.02 lbs.
SSS344	3/4"	4-1/2"	2"	1-1/2"	2-3/4"	4,500 lbs.	1.23 lbs.
SSS346	3/4"	6"	3"	1-1/2"	2-3/4"	4,500 lbs.	1.68 lbs.
SSS106	1"	6"	3"	2"	3-3/4"	8,500 lbs.	3.66 lbs.

NUT EYE BOLTS

NUT EYE BOLTS

PLAIN PATTERN



Design: Plain Pattern
 Process: Forged
 Threads: UNC
 Material: 1045 Carbon Steel
 Finish: Hot Dipped Galvanized
 Nut: Installed



ITEM NUMBER	SHANK DIAMETER (A)	SHANK LENGTH (B)	THREAD LENGTH (C)	ID (D)	OD (E)	RATED CAPACITY	WEIGHT/PC. (Approx.)
NPP142	1/4"	2"	1-1/2"	1/2"	1"	500 lbs.	.08 lbs.
NPP143	1/4"	3"	1-1/2"	1/2"	1"	500 lbs.	.07 lbs.
NPP144	1/4"	4"	2-1/2"	1/2"	1"	500 lbs.	.12 lbs.
HD48139	1/4"	5"	3"	1/2"	1"	500 lbs.	.10 lbs.
HD48149	1/4"	6"	3"	1/2"	1"	500 lbs.	.11 lbs.
NPP145	5/16"	2-1/4"	1-1/2"	5/8"	1-1/4"	800 lbs.	.13 lbs.
NPP146	5/16"	4-1/4"	2-1/2"	5/8"	1-1/4"	800 lbs.	.25 lbs.
NPP382	3/8"	2-1/2"	1-1/2"	3/4"	1-1/2"	1,200 lbs.	.23 lbs.
NPP384	3/8"	4-1/2"	2-1/2"	3/4"	1-1/2"	1,200 lbs.	.30 lbs.
NPP385	3/8"	5"	3"	3/4"	1-1/2"	1,200 lbs.	.29 lbs.
NPP386	3/8"	6"	2-1/2"	3/4"	1-1/2"	1,200 lbs.	.35 lbs.
NPP123	1/2"	3-1/4"	1-1/2"	1"	2"	2,100 lbs.	.50 lbs.
NPP124	1/2"	4"	2"	1"	2"	2,100 lbs.	.44 lbs.
NPP125	1/2"	5"	3"	1"	2"	2,100 lbs.	.55 lbs.
NPP126	1/2"	6"	3"	1"	2"	2,100 lbs.	.66 lbs.
NPP128	1/2"	8"	3"	1"	2"	2,100 lbs.	.82 lbs.
NPP121	1/2"	10"	3"	1"	2"	2,100 lbs.	.88 lbs.
NPP122	1/2"	12"	3"	1"	2"	2,100 lbs.	1.14 lbs.
NPP584	5/8"	4"	2"	1-1/4"	2-1/2"	3,200 lbs.	1.03 lbs.
NPP586	5/8"	6"	3"	1-1/4"	2-1/2"	3,200 lbs.	1.18 lbs.
NPP588	5/8"	8"	3"	1-1/4"	2-1/2"	3,200 lbs.	1.34 lbs.
NPP580	5/8"	10"	3"	1-1/4"	2-1/2"	3,200 lbs.	1.54 lbs.
NPP582	5/8"	12"	4"	1-1/4"	2-1/2"	3,200 lbs.	1.67 lbs.
NPP344	3/4"	4-1/2"	2"	1-1/2"	3"	4,500 lbs.	1.69 lbs.
NPP346	3/4"	6"	3"	1-1/2"	3"	4,500 lbs.	1.85 lbs.
NPP348	3/4"	8"	3"	1-1/2"	3"	4,500 lbs.	2.08 lbs.
NPP341	3/4"	10"	3"	1-1/2"	3"	4,500 lbs.	2.35 lbs.
NPP342	3/4"	12"	4"	1-1/2"	3"	4,500 lbs.	2.58 lbs.
NPP345	3/4"	15"	5"	1-1/2"	3"	4,500 lbs.	2.98 lbs.
NPP785	7/8"	5"	2-1/2"	1-3/4"	3-1/2"	7,000 lbs.	2.70 lbs.
NPP788	7/8"	8"	4"	1-3/4"	3-1/2"	7,000 lbs.	3.08 lbs.
NPP781	7/8"	12"	4"	1-3/4"	3-1/2"	7,000 lbs.	4.00 lbs.
NPP106	1"	6"	3"	2"	4"	8,500 lbs.	4.21 lbs.
NPP109	1"	9"	4"	2"	4"	8,500 lbs.	4.69 lbs.
NPP112	1"	12"	4"	2"	4"	8,500 lbs.	5.40 lbs.
NPP118	1"	18"	7"	2"	4"	8,500 lbs.	6.50 lbs.
NPP408	1-1/4"	8"	4"	2-1/2"	5"	13,500 lbs.	7.50 lbs.
NPP412	1-1/4"	12"	4"	2-1/2"	5"	13,500 lbs.	9.00 lbs.
NPP418	1-1/4"	18"	4"	2-1/2"	5"	13,500 lbs.	12.10 lbs.

Plain and shoulder patterns are manufactured to ASME design specification B30-26.

NUT EYE BOLT

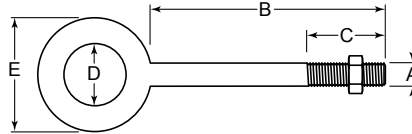
Blanks & Customs Available Online at huyett.com/QuoteTool
 Self-Colored or Plated | With or Without Shoulder
 Made Just the Way You Need Them.

Nut Eye Bolts are not recommended for lifting applications. See Lifting Eye Bolts on page 6 for lifting applications.
 Rated capacity refers to a straight (zero degree) pull. Pulling at an angle reduces the rated capacity significantly.

NUT EYE BOLTS

STAINLESS STEEL NUT EYE BOLTS

PLAIN PATTERN



Design: Plain Pattern
 Process: Cast
 Threads: UNC
 Material: 304 Stainless Steel
 Finish: Polished
 Nut: Installed



ITEM NUMBER	SHANK DIAMETER (A)	SHANK LENGTH (B)	THREAD LENGTH (C)	ID (D)	OD (E)	RATED CAPACITY	WEIGHT/PC. (Approx.)
SSN142	1/4"	2"	1-1/2"	1/2"	1"	500 lbs.	.08 lbs.
SSN144	1/4"	4"	2-1/2"	1/2"	1"	500 lbs.	.12 lbs.
SSN145	5/16"	2-1/4"	1-1/2"	5/8"	1-1/4"	800 lbs.	.13 lbs.
SSN146	5/16"	4-1/4"	2-1/2"	5/8"	1-1/4"	800 lbs.	.25 lbs.
SSN382	3/8"	2-1/2"	1-1/2"	3/4"	1-1/2"	1,150 lbs.	.23 lbs.
SSN384	3/8"	4-1/2"	2-1/2"	3/4"	1-1/2"	1,150 lbs.	.30 lbs.
SSN123	1/2"	3-1/4"	1-1/2"	1"	2"	2,150 lbs.	.50 lbs.
SSN126	1/2"	6"	3"	1"	2"	2,150 lbs.	.66 lbs.
SSN584	5/8"	4"	2"	1-1/4"	2-1/2"	3,400 lbs.	1.03 lbs.
SSN586	5/8"	6"	3"	1-1/4"	2-1/2"	3,400 lbs.	1.18 lbs.
SSN346	3/4"	6"	3"	1-1/2"	3"	5,100 lbs.	1.38 lbs.
SSN106	1"	6"	3"	2"	4"	8,500 lbs.	2.80 lbs.

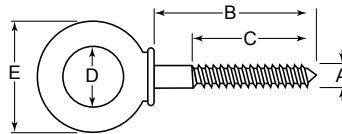
Nut Eye Bolts are not recommended for lifting applications. See Lifting Eye Bolts on page 6 for lifting applications. Rated capacity refers to a straight (zero degree) pull. Pulling at an angle reduces the rated capacity significantly.

SCREW EYE BOLTS

SCREW EYE BOLTS

SHOULDER PATTERN

NUT EYE BOLT



Design: Shoulder Pattern
 Process: Forged
 Threads: Lag Screw
 Material: 1045 Carbon Steel
 Finish: Hot Dipped Galvanized



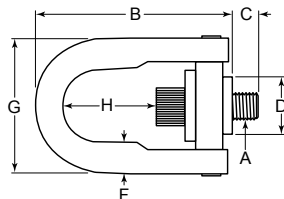
ITEM NUMBER	SHANK DIAMETER (A)	SHANK LENGTH (B)	THREAD LENGTH (C)	ID (D)	OD (E)	WEIGHT/PC. (Approx.)
SEB142	1/4"	2"	1-1/2"	1/2"	7/8"	.04 lbs.
SEB143	1/4"	3"	2-1/4"	1/2"	7/8"	.07 lbs.
SEB144	1/4"	4"	3"	1/2"	7/8"	.08 lbs.
SEB516	5/16"	2-1/4"	1-11/16"	5/8"	1-1/8"	.09 lbs.
SEB382	3/8"	2-1/2"	1-7/8"	3/4"	1-3/8"	.18 lbs.
SEB383	3/8"	3"	2-1/4"	3/4"	1-3/8"	.20 lbs.
SEB384	3/8"	4"	3"	3/4"	1-3/8"	.23 lbs.
SEB386	3/8"	6"	3-1/2"	3/4"	1-3/8"	.30 lbs.
SEB122	1/2"	2"	1-1/2"	1"	1-3/4"	.36 lbs.
SEB123	1/2"	3-1/4"	2-7/16"	1"	1-3/4"	.38 lbs.
SEB124	1/2"	4"	2-1/2"	1"	1-3/4"	.40 lbs.
SEB584	5/8"	4"	3"	1-1/4"	2-1/4"	.85 lbs.

Screw Eye Bolts are not recommended for lifting applications. See Lifting Eye Bolts on page 6 for lifting applications. No rated capacity.

SWIVEL HOIST RINGS

SWIVEL HOIST RINGS

SWIVEL AND PIVOT

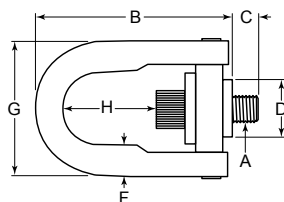


Design: Full Swivel and Pivot
 Process: Machined/Tooled
 Threads: UNC
 Material: Alloy Steel
 Finish: Black Oxide

ITEM NUMBER	THREAD SIZE/PITCH (A)	(B)	(C)	(D)	(F)	(G)	(H)	TORQUE (ft. lbs.)	RATED CAPACITY	WEIGHT/PC. (Approx.)
SHR516	5/16"-18	2-11/16"	9/16"	15/16"	5/16"	1-7/8"	1-1/8"	7 ft. lbs.	800 lbs.	.37 lbs.
SHR038	3/8"-16	2-11/16"	9/16"	15/16"	5/16"	1-7/8"	1-1/8"	12 ft. lbs.	1,000 lbs.	.39 lbs.
SHR012	1/2"-13	4-7/8"	1-1/16"	1-15/16"	11/16"	3-5/16"	2-5/16"	28 ft. lbs.	2,500 lbs.	2.00 lbs.
SHR013	1/2"-13	4-7/8"	3/4"	1-15/16"	11/16"	3-5/16"	2-5/16"	28 ft. lbs.	2,500 lbs.	2.50 lbs.
SHR014	1/2"-13	4-7/8"	1"	1-15/16"	11/16"	3-5/16"	2-5/16"	28 ft. lbs.	2,500 lbs.	2.50 lbs.
SHR015	1/2"-13	4-7/8"	1-1/4"	1-15/16"	11/16"	3-5/16"	2-5/16"	28 ft. lbs.	2,500 lbs.	2.60 lbs.
SHR058	5/8"-11	4-7/8"	11/16"	1-15/16"	11/16"	3-5/16"	2-1/8"	60 ft. lbs.	4,000 lbs.	2.41 lbs.
SHR059	5/8"-11	4-7/8"	1-3/16"	1-15/16"	11/16"	3-5/16"	2-1/8"	60 ft. lbs.	4,000 lbs.	2.47 lbs.
SHR060	3/4"-10	4-7/8"	15/16"	1-15/16"	11/16"	3-5/16"	2-1/16"	100 ft. lbs.	5,000 lbs.	2.52 lbs.
SHR061	3/4"-10	4-7/8"	1-7/16"	1-15/16"	11/16"	3-5/16"	2-1/16"	100 ft. lbs.	5,000 lbs.	2.59 lbs.
SHR062	3/4"-10	6-9/16"	7/8"	2-15/16"	15/16"	4-7/8"	2-15/16"	100 ft. lbs.	7,000 lbs.	6.72 lbs.
SHR063	3/4"-10	6-9/16"	1-5/8"	2-15/16"	15/16"	4-7/8"	2-15/16"	100 ft. lbs.	7,000 lbs.	6.81 lbs.
SHR078	7/8"-9	6-9/16"	7/8"	2-15/16"	15/16"	4-7/8"	2-13/16"	160 ft. lbs.	8,000 lbs.	6.84 lbs.
SHR079	7/8"-9	6-9/16"	1-5/8"	2-15/16"	15/16"	4-7/8"	2-13/16"	160 ft. lbs.	8,000 lbs.	6.96 lbs.
SHR001	1"-8	6-9/16"	1-1/4"	2-15/16"	15/16"	4-7/8"	2-11/16"	230 ft. lbs.	10,000 lbs.	7.40 lbs.
SHR003	1"-8	6-9/16"	1-1/2"	2-15/16"	15/16"	4-7/8"	2-11/16"	230 ft. lbs.	10,000 lbs.	7.50 lbs.
SHR004	1"-8	6-9/16"	2-1/4"	2-15/16"	15/16"	4-7/8"	2-11/16"	230 ft. lbs.	10,000 lbs.	7.60 lbs.
SHR114	1-1/4"-7	8-11/16"	2-3/16"	3-11/16"	1-3/16"	6-3/16"	3-15/16"	470 ft. lbs.	15,000 lbs.	14.51 lbs.
SHR112	1-1/2"-6	12-7/16"	2-15/16"	4-11/16"	1-3/4"	8-1/2"	5-5/8"	800 ft. lbs.	24,000 lbs.	37.73 lbs.
SHR002	2"-4.5	12-7/16"	2-15/16"	4-11/16"	1-3/4"	8-1/2"	5-1/8"	1,100 ft. lbs.	30,000 lbs.	40.69 lbs.
SHR212	2-1/2"-4	16-7/8"	4"	5-3/4"	2-1/4"	11-11/16"	8-1/16"	2,100 ft. lbs.	50,000 lbs.	88.00 lbs.

METRIC SWIVEL HOIST RINGS

SWIVEL AND PIVOT



Design: Full Swivel and Pivot
 Process: Machined/Tooled
 Threads: Metric Coarse
 Material: Alloy Steel
 Finish: Black Oxide

ITEM NUMBER	THREAD SIZE/PITCH (A)	(B)	(C)	(D)	(F)	(G)	(H)	TORQUE (Nm)	RATED CAPACITY	WEIGHT/PC. (Approx.)
MSHR08	M8-1.25	69.2 mm	16.7 mm	24.6 mm	8.5 mm	47.5 mm	28.2 mm	9 Nm	400 kgs.	.17 lbs.
MSHR10	M10-1.50	69.2 mm	16.7 mm	24.6 mm	8.5 mm	47.5 mm	26.2 mm	16 Nm	450 kgs.	.18 lbs.
MSHR12	M12-1.75	123.0 mm	16.9 mm	49.8 mm	17.5 mm	85.1 mm	58.9 mm	37 Nm	1,050 kgs.	1.05 lbs.
MSHR14	M14-2.00	58.0 mm	29.0 mm	38.0 mm	19.0 mm	89.0 mm	58.0 mm	40 Nm	1,050 kgs.	2.50 lbs.
MSHR16	M16-2.00	123.0 mm	26.9 mm	49.8 mm	17.5 mm	85.1 mm	54.9 mm	80 Nm	1,900 kgs.	1.11 lbs.
MSHR20	M20-2.50	123.0 mm	34.0 mm	38.1 mm	19.0 mm	89.4 mm	52.5 mm	135 Nm	2,150 kgs.	2.62 lbs.
MSHR24	M24-3.00	167.0 mm	32.8 mm	75.2 mm	25.4 mm	124.0 mm	70.4 mm	311 Nm	4,200 kgs.	3.21 lbs.
MSHR30	M30-3.50	222.0 mm	61.7 mm	94.2 mm	30.5 mm	157.0 mm	101.0 mm	637 Nm	7,000 kgs.	6.53 lbs.
MSHR36	M36-4.00	316.0 mm	60.3 mm	120.0 mm	44.5 mm	215.0 mm	145.0 mm	1,085 Nm	11,000 kgs.	16.81 lbs.

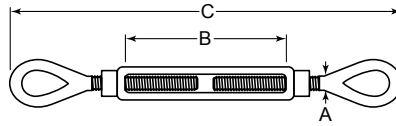
! See Safe Lifting Chart on page 5. All rated capacities consider a straight vertical lift. Use CAUTION when lifting. Any angle beyond vertical (zero degree) will reduce the rated capacity. Safety factor is 5x rated capacity. Every ring proof tested at 2x. Full shank thread to shoulder. Use torque chart above for proper installation.

SWIVEL HOIST RINGS

TURNBUCKLES

TURNBUCKLES

EYE/EYE



Design: Eye/Eye
 Process: Forged
 Threads: UNC
 Material: 1045 Carbon Steel
 Finish: Hot Dipped Galvanized

ITEM NUMBER	FITTING SHANK DIAMETER (A)	BODY TAKE-UP (B)	OAL CLOSED (C)	OAL OPEN (Ref.)	RATED CAPACITY	WEIGHT/PC. (Approx.)
TEE144	1/4"	4"	8-1/4"	12-1/4"	500 lbs.	.26 lbs.
TEE516	5/16"	4-1/2"	9-5/8"	14-1/8"	800 lbs.	.45 lbs.
TEE386	3/8"	6"	12-3/16"	18-3/16"	1,200 lbs.	.76 lbs.
TEE126	1/2"	6"	14"	21"	2,200 lbs.	1.54 lbs.
TEE129	1/2"	9"	17"	25"	2,200 lbs.	1.76 lbs.
TEE122	1/2"	12"	20"	33"	2,200 lbs.	2.14 lbs.
TEE586	5/8"	6"	15-11/16"	22-15/16"	3,500 lbs.	2.40 lbs.
TEE589	5/8"	9"	19-1/4"	28"	3,500 lbs.	2.87 lbs.
TEE581	5/8"	12"	21-15/16"	35"	3,500 lbs.	3.42 lbs.
TEE346	3/4"	6"	17-5/8"	25-1/8"	5,200 lbs.	3.79 lbs.
TEE349	3/4"	9"	19-13/16"	31-7/8"	5,200 lbs.	3.75 lbs.
TEE342	3/4"	12"	23-5/8"	37-1/8"	5,200 lbs.	5.48 lbs.
TEE348	3/4"	18"	29-5/8"	49-1/8"	5,200 lbs.	7.19 lbs.
TEE786	7/8"	6"	19"	25"	7,200 lbs.	5.73 lbs.
TEE782	7/8"	12"	24-13/16"	38-9/16"	7,200 lbs.	7.22 lbs.
TEE788	7/8"	18"	30-13/16"	50-9/16"	7,200 lbs.	9.95 lbs.
TEE160	1"	6"	21-3/4"	30-3/4"	10,000 lbs.	9.04 lbs.
TEE112	1"	12"	27-3/4"	42"	10,000 lbs.	11.50 lbs.
TEE118	1"	18"	33-3/4"	53-3/4"	10,000 lbs.	14.00 lbs.
TEE124	1"	24"	39-3/4"	65-3/4"	10,000 lbs.	17.25 lbs.
TEE146	1-1/4"	6"	24-9/16"	32"	15,200 lbs.	15.45 lbs.
TEE142	1-1/4"	12"	30-9/16"	45-1/16"	15,200 lbs.	19.00 lbs.
TEE148	1-1/4"	18"	36-9/16"	57-1/16"	15,200 lbs.	23.00 lbs.
TEE149	1-1/4"	24"	42-9/16"	69-1/16"	15,200 lbs.	27.00 lbs.
TEE125	1-1/2"	12"	33"	48"	21,400 lbs.	27.50 lbs.
TEE128	1-1/2"	18"	39"	60"	21,400 lbs.	31.00 lbs.
TEE130	1-1/2"	24"	45"	72"	21,400 lbs.	37.50 lbs.
TEE138	1-3/4"	18"	42-3/8"	60-3/8"	28,000 lbs.	52.50 lbs.
TEE134	1-3/4"	24"	48-3/8"	72-3/8"	28,000 lbs.	58.00 lbs.
TEE224	2"	24"	55-3/16"	79-3/16"	37,000 lbs.	85.25 lbs.
TEE254	2-1/2"	24"	58-5/8"	82-5/8"	60,000 lbs.	144.25 lbs.
TEE275	2-3/4"	24"	61-1/2"	85-1/2"	75,000 lbs.	194.00 lbs.

Manufactured to meet or exceed design requirements as specified in ASTM F1145 for Type 1, Grade 1, Class D.

Your Account Order History at huyett.com includes:

- Order Status
- Your Favorites
- Order Tracking Info
- Quantity Breaks
- Expected Ship Date
- Customer Specific Pricing

Visit our Knowledge Vault for catalogs, product training, and best practices.

* Some Exclusions Apply

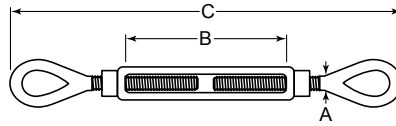


Turnbuckles are rated with full thread engagement. Use CAUTION to ensure proper installation. Rated capacity refers to a straight (zero degree) pull. Pulling at an angle reduces the rated capacity significantly. See page 5 for more information. Open length estimated dependent on amount of full thread engagement at installation before take-up step.

TURNBUCKLES

STAINLESS STEEL TURNBUCKLES

EYE/EYE



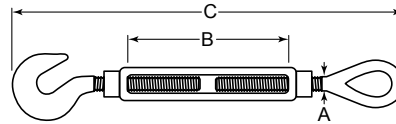
Design: Eye/Eye
 Process: Cast
 Threads: UNC
 Material: 304 Stainless Steel
 Finish: Polished

ITEM NUMBER	FITTING SHANK DIAMETER (A)	BODY TAKE-UP (B)	OAL CLOSED (C)	OAL OPEN (Ref.)	RATED CAPACITY	WEIGHT/PC. (Approx.)
STDE14	1/4"	4"	8-1/4"	12-1/4"	320 lbs.	.26 lbs.
STDE56	5/16"	4-1/2"	9-9/16"	14-1/8"	500 lbs.	.45 lbs.
STDE38	3/8"	6"	12-1/8"	18-1/8"	800 lbs.	.76 lbs.
STDE12	1/2"	6"	13-15/16"	20-15/16"	1,400 lbs.	1.54 lbs.
STDE58	5/8"	6"	15-9/16"	22-15/16"	2,240 lbs.	2.40 lbs.
STDE34	3/4"	6"	17-5/8"	25-1/8"	4,000 lbs.	3.79 lbs.

Manufactured to provide maximum corrosion resistance.

TURNBUCKLES

EYE/HOOK



Design: Eye/Hook
 Process: Forged
 Threads: UNC
 Material: 1045 Carbon Steel
 Finish: Hot Dipped Galvanized

ITEM NUMBER	FITTING SHANK DIAMETER (A)	BODY TAKE-UP (B)	OAL CLOSED (C)	OAL OPEN (Ref.)	RATED CAPACITY	WEIGHT/PC. (Approx.)
THE144	1/4"	4"	8-1/16"	12-1/16"	400 lbs.	.29 lbs.
THE516	5/16"	4-1/2"	9-1/2"	13-1/2"	700 lbs.	.49 lbs.
THE386	3/8"	6"	11-15/16"	17-15/16"	1,000 lbs.	.78 lbs.
THE126	1/2"	6"	13-9/16"	20-11/16"	1,500 lbs.	1.61 lbs.
THE129	1/2"	9"	17"	25"	1,500 lbs.	1.98 lbs.
THE122	1/2"	12"	19-5/8"	32-11/16"	1,500 lbs.	2.26 lbs.
THE586	5/8"	6"	15-1/2"	22-3/4"	2,250 lbs.	2.70 lbs.
THE589	5/8"	9"	19-1/4"	28"	2,250 lbs.	3.08 lbs.
THE581	5/8"	12"	21-1/2"	34-3/4"	2,250 lbs.	3.78 lbs.
THE346	3/4"	6"	17-1/2"	25"	3,000 lbs.	3.89 lbs.
THE349	3/4"	9"	19-5/8"	31-11/16"	3,000 lbs.	3.97 lbs.
THE342	3/4"	12"	23-1/2"	37"	3,000 lbs.	5.83 lbs.
THE348	3/4"	18"	29-1/2"	49"	3,000 lbs.	6.33 lbs.
THE786	7/8"	6"	19"	25"	4,000 lbs.	5.85 lbs.
THE782	7/8"	12"	24-7/8"	38-5/8"	4,000 lbs.	8.10 lbs.
THE788	7/8"	18"	30"	51-1/2"	4,000 lbs.	10.58 lbs.
THE160	1"	6"	20-1/8"	30-3/16"	5,000 lbs.	9.26 lbs.
THE112	1"	12"	27-1/4"	41-1/4"	5,000 lbs.	11.95 lbs.
THE118	1"	18"	32-1/8"	54-3/16"	5,000 lbs.	13.23 lbs.
THE124	1"	24"	38"	66-3/16"	5,000 lbs.	17.42 lbs.
THE146	1-1/4"	6"	24-9/16"	32"	6,500 lbs.	15.45 lbs.
THE142	1-1/4"	12"	30-9/16"	45"	6,500 lbs.	21.38 lbs.
THE148	1-1/4"	18"	28-5/16"	57-3/16"	6,500 lbs.	25.35 lbs.
THE149	1-1/4"	24"	40-5/8"	69-3/16"	6,500 lbs.	28.00 lbs.
THE125	1-1/2"	12"	29-1/8"	48-1/2"	7,500 lbs.	27.50 lbs.
THE128	1-1/2"	18"	39"	58"	7,500 lbs.	31.00 lbs.
THE130	1-1/2"	24"	43"	72-3/8"	7,500 lbs.	37.50 lbs.

Manufactured to meet or exceed design requirements as specified in ASTM F1145 for Type 1, Grade 1, Class F.

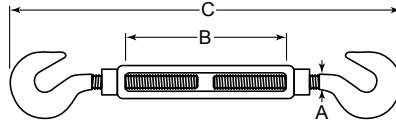
! Turnbuckles are rated with full thread engagement. Use CAUTION to ensure proper installation. Rated capacity refers to a straight (zero degree) pull. Pulling at an angle reduces the rated capacity significantly. See page 5 for more information. Open length estimated dependent on amount of full thread engagement at installation before take-up step.

TURNBUCKLES

TURNBUCKLES

TURNBUCKLES

HOOK/HOOK



Design: Hook/Hook
 Process: Forged
 Threads: UNC
 Material: 1045 Carbon Steel
 Finish: Hot Dipped Galvanized

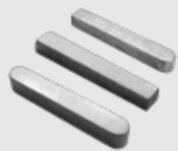
ITEM NUMBER	FITTING SHANK DIAMETER (A)	BODY TAKE-UP (B)	OAL CLOSED (C)	OAL OPEN (Ref.)	RATED CAPACITY	WEIGHT/PC. (Approx.)
THH144	1/4"	4"	8"	12"	400 lbs.	.30 lbs.
THH516	5/16"	4-1/2"	9-1/4"	14"	700 lbs.	.47 lbs.
THH386	3/8"	6"	11-3/4"	18"	1,000 lbs.	.75 lbs.
THH126	1/2"	6"	13-3/8"	21"	1,500 lbs.	1.60 lbs.
THH129	1/2"	9"	17"	25"	1,500 lbs.	1.54 lbs.
THH122	1/2"	12"	19-3/8"	32"	1,500 lbs.	2.08 lbs.
THH586	5/8"	6"	15-1/4"	22"	2,250 lbs.	2.75 lbs.
THH589	5/8"	9"	19-1/4"	28"	2,250 lbs.	3.31 lbs.
THH581	5/8"	12"	21-1/4"	34"	2,250 lbs.	3.50 lbs.
THH346	3/4"	6"	17-1/4"	25"	3,000 lbs.	3.90 lbs.
THH349	3/4"	9"	19-7/16"	31-1/2"	3,000 lbs.	4.41 lbs.
THH342	3/4"	12"	23-1/4"	37"	3,000 lbs.	5.40 lbs.
THH348	3/4"	18"	29-1/4"	49"	3,000 lbs.	7.25 lbs.
THH786	7/8"	6"	19"	25"	4,000 lbs.	5.85 lbs.
THH782	7/8"	12"	25"	38"	4,000 lbs.	8.10 lbs.
THH788	7/8"	18"	30"	51-5/8"	4,000 lbs.	11.24 lbs.
THH160	1"	6"	19-1/2"	29-5/8"	5,000 lbs.	9.70 lbs.
THH112	1"	12"	26-3/4"	42"	5,000 lbs.	11.95 lbs.
THH118	1"	18"	31-9/16"	53-11/16"	5,000 lbs.	14.11 lbs.
THH124	1"	24"	37-1/2"	65-11/16"	5,000 lbs.	19.40 lbs.
THH146	1-1/4"	6"	24-9/16"	32"	6,500 lbs.	15.45 lbs.
THH142	1-1/4"	12"	30-9/16"	45"	6,500 lbs.	22.71 lbs.
THH148	1-1/4"	18"	34-1/8"	56-11/16"	6,500 lbs.	27.12 lbs.
THH149	1-1/4"	24"	40-1/8"	68-11/16"	6,500 lbs.	29.98 lbs.
THH125	1-1/2"	12"	30-3/4"	48-3/16"	7,500 lbs.	29.98 lbs.
THH128	1-1/2"	18"	39"	58"	7,500 lbs.	31.00 lbs.
THH130	1-1/2"	24"	45"	70"	7,500 lbs.	37.50 lbs.

Manufactured to meet or exceed design requirements as specified in ASTM F1145 for Type 1, Grade 1, Class E.

ALSO AVAILABLE AT HUYETT.COM



Grease Fittings & Accessories



Machine Keys & Key Stock



Pins & Wire Forms



Engineered Fasteners



Rivet Nuts & Installation Tools



Wave & Spring Washers



Hose Clamps

Don't see what you're looking for?

Give our Sales Team a call today.

785-392-3017

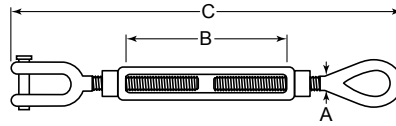
! Turnbuckles are rated with full thread engagement. Use CAUTION to ensure proper installation. Rated capacity refers to a straight (zero degree) pull. Pulling at an angle reduces the rated capacity significantly. See page 5 for more information. Open length estimated dependent on amount of full thread engagement at installation before take-up step.



TURNBUCKLES

TURNBUCKLES

EYE/JAW



Design: Eye/Jaw
 Process: Forged
 Threads: UNC
 Material: 1045 Carbon Steel
 Finish: Hot Dipped Galvanized

ITEM NUMBER	FITTING SHANK DIAMETER (A)	BODY TAKE-UP (B)	OAL CLOSED (C)	OAL OPEN (Ref.)	RATED CAPACITY	WEIGHT/PC. (Approx.)
TJE144	1/4"	4"	8-1/16"	12-1/16"	500 lbs.	.32 lbs.
TJE516	5/16"	4-1/2"	9-1/2"	14"	800 lbs.	.50 lbs.
TJE386	3/8"	6"	11-3/4"	17-3/4"	1,200 lbs.	.76 lbs.
TJE126	1/2"	6"	13-1/2"	20-1/2"	2,200 lbs.	1.53 lbs.
TJE129	1/2"	9"	16-1/2"	26-1/2"	2,200 lbs.	1.71 lbs.
TJE122	1/2"	12"	19-1/2"	32-1/2"	2,200 lbs.	2.06 lbs.
TJE586	5/8"	6"	15-1/4"	22-1/2"	3,500 lbs.	2.35 lbs.
TJE589	5/8"	9"	18-1/4"	28-1/2"	3,500 lbs.	3.06 lbs.
TJE581	5/8"	12"	21-1/4"	34-1/2"	3,500 lbs.	3.78 lbs.
TJE346	3/4"	6"	17-1/8"	24-5/8"	5,200 lbs.	4.00 lbs.
TJE349	3/4"	9"	20-1/8"	30-5/8"	5,200 lbs.	4.75 lbs.
TJE342	3/4"	12"	23-1/8"	36-5/8"	5,200 lbs.	5.36 lbs.
TJE348	3/4"	18"	29-1/8"	48-5/8"	5,200 lbs.	7.00 lbs.
TJE786	7/8"	6"	18-1/2"	25"	7,200 lbs.	5.73 lbs.
TJE782	7/8"	12"	24-9/16"	38-5/16"	7,200 lbs.	8.00 lbs.
TJE788	7/8"	18"	30-9/16"	50-5/16"	7,200 lbs.	9.75 lbs.
TJE160	1"	6"	20-7/8"	28-7/8"	10,000 lbs.	8.92 lbs.
TJE112	1"	12"	26-7/8"	40-7/8"	10,000 lbs.	11.20 lbs.
TJE118	1"	18"	32-7/8"	52-7/8"	10,000 lbs.	13.30 lbs.
TJE124	1"	24"	38-7/8"	64-7/8"	10,000 lbs.	17.00 lbs.
TJE146	1-1/4"	6"	24"	30"	15,200 lbs.	16.03 lbs.
TJE142	1-1/4"	12"	30-1/16"	44-9/16"	15,200 lbs.	20.00 lbs.
TJE148	1-1/4"	18"	36-1/16"	56-1/16"	15,200 lbs.	24.18 lbs.
TJE149	1-1/4"	24"	42-1/16"	68-9/16"	15,200 lbs.	28.50 lbs.
TJE125	1-1/2"	12"	32-1/4"	47-1/4"	21,400 lbs.	29.00 lbs.
TJE128	1-1/2"	18"	38-1/4"	59-1/4"	21,400 lbs.	35.00 lbs.
TJE130	1-1/2"	24"	44-1/4"	71-1/4"	21,400 lbs.	39.20 lbs.
TJE138	1-3/4"	18"	41-7/8"	59-3/4"	28,000 lbs.	53.75 lbs.
TJE134	1-3/4"	24"	47-7/8"	71-3/4"	28,000 lbs.	60.68 lbs.
TJE224	2"	24"	53-15/16"	77-15/16"	37,000 lbs.	89.00 lbs.
TJE254	2-1/2"	24"	58-7/16"	82-7/16"	60,000 lbs.	150.00 lbs.
TJE275	2-3/4"	24"	61-1/2"	85-1/2"	75,000 lbs.	183.00 lbs.

Manufactured to meet or exceed design requirements as specified in ASTM F1145 for Type 1, Grade 1, Class H.

PROUD DISTRIBUTORS OF



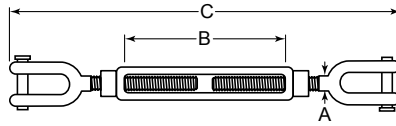
! Turnbuckles are rated with full thread engagement. Use CAUTION to ensure proper installation. Rated capacity refers to a straight (zero degree) pull. Pulling at an angle reduces the rated capacity significantly. See page 5 for more information. Jaw ends through 5/8" use nut and bolt, sizes 3/4" and up use clevis/cotter pins for containment. Open length estimated dependent on amount of full thread engagement at installation before take-up step.

TURNBUCKLES

TURNBUCKLES

TURNBUCKLES

JAW/JAW

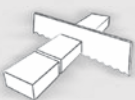


Design: Jaw/Jaw
 Process: Forged
 Threads: UNC
 Material: 1045 Carbon Steel
 Finish: Hot Dipped Galvanized

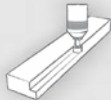
ITEM NUMBER	FITTING SHANK DIAMETER (A)	BODY TAKE-UP (B)	OAL CLOSED (C)	OAL OPEN (Ref.)	RATED CAPACITY	WEIGHT/PC. (Approx.)
TJJ144	1/4"	4"	7-15/16"	12-15/16"	500 lbs.	.36 lbs.
TJJ516	5/16"	4-1/2"	9-7/16"	13-15/16"	800 lbs.	.52 lbs.
TJJ386	3/8"	6"	11-3/8"	17-3/8"	1,200 lbs.	.81 lbs.
TJJ126	1/2"	6"	13"	20"	2,200 lbs.	1.50 lbs.
TJJ129	1/2"	9"	16"	26"	2,200 lbs.	1.74 lbs.
TJJ122	1/2"	12"	19"	32"	2,200 lbs.	2.40 lbs.
TJJ586	5/8"	6"	14-7/8"	22-1/8"	3,500 lbs.	2.72 lbs.
TJJ589	5/8"	9"	17-7/8"	28-1/8"	3,500 lbs.	3.24 lbs.
TJJ581	5/8"	12"	20-7/8"	34-1/8"	3,500 lbs.	3.74 lbs.
TJJ346	3/4"	6"	16-5/8"	24-1/8"	5,200 lbs.	4.11 lbs.
TJJ349	3/4"	9"	19-5/8"	30-1/8"	5,200 lbs.	5.10 lbs.
TJJ342	3/4"	12"	22-5/8"	36-1/8"	5,200 lbs.	5.65 lbs.
TJJ348	3/4"	18"	28-5/8"	48-1/8"	5,200 lbs.	7.00 lbs.
TJJ786	7/8"	6"	18-5/16"	25"	7,200 lbs.	6.84 lbs.
TJJ782	7/8"	12"	24-5/6"	38-1/16"	7,200 lbs.	8.17 lbs.
TJJ788	7/8"	18"	30-5/16"	50-1/16"	7,200 lbs.	9.96 lbs.
TJJ160	1"	6"	20-1/16"	28-1/16"	10,000 lbs.	9.76 lbs.
TJJ112	1"	12"	26-1/16"	40-1/16"	10,000 lbs.	12.00 lbs.
TJJ118	1"	18"	32-1/16"	52-1/16"	10,000 lbs.	14.00 lbs.
TJJ124	1"	24"	38-1/16"	64-1/16"	10,000 lbs.	18.60 lbs.
TJJ146	1-1/4"	6"	24-1/2"	30"	15,200 lbs.	16.70 lbs.
TJJ142	1-1/4"	12"	29-9/16"	44-1/16"	15,200 lbs.	21.50 lbs.
TJJ148	1-1/4"	18"	35-9/16"	56-1/16"	15,200 lbs.	24.25 lbs.
TJJ149	1-1/4"	24"	41-9/16"	68-1/16"	15,200 lbs.	28.00 lbs.
TJJ125	1-1/2"	12"	31-1/2"	46-1/2"	21,400 lbs.	30.00 lbs.
TJJ128	1-1/2"	18"	37-1/2"	58-1/2"	21,400 lbs.	36.75 lbs.
TJJ130	1-1/2"	24"	43-1/2"	70-1/2"	21,400 lbs.	40.70 lbs.
TJJ138	1-3/4"	18"	41-3/16"	59-3/16"	28,000 lbs.	55.04 lbs.
TJJ134	1-3/4"	24"	47-3/16"	71-3/16"	28,000 lbs.	63.36 lbs.
TJJ224	2"	24"	52-3/4"	76-3/4"	37,000 lbs.	94.25 lbs.
TJJ254	2-1/2"	24"	58-3/16"	82-3/16"	60,000 lbs.	165.00 lbs.
TJJ275	2-3/4"	24"	61-1/2"	85-1/2"	75,000 lbs.	198.00 lbs.

Manufactured to meet or exceed design requirements as specified in ASTM F1145 for Type 1, Grade 1, Class G.

MANUFACTURING CAPABILITIES



Sawing



Milling



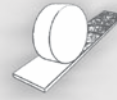
Drilling



Turning



Laser Cutting



Surface Grinding



Tumbling

TURNBUCKLES

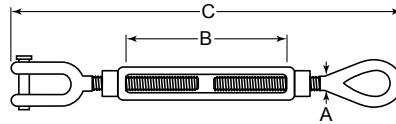
! Turnbuckles are rated with full thread engagement. Use CAUTION to ensure proper installation. Rated capacity refers to a straight (zero degree) pull. Pulling at an angle reduces the rated capacity significantly. See page 5 for more information. Jaw ends through 5/8" use nut and bolt, sizes 3/4" and up use clevis/cotter pins for containment. Open length estimated dependent on amount of full thread engagement at installation before take-up step.



TURNBUCKLES

STAINLESS STEEL TURNBUCKLES

EYE/JAW



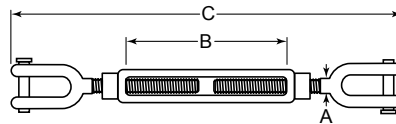
Design: Eye/Jaw
 Process: Cast
 Threads: UNC
 Material: 304 Stainless Steel
 Finish: Polished

ITEM NUMBER	FITTING SHANK DIAMETER (A)	BODY TAKE-UP (B)	OAL CLOSED (C)	OAL OPEN (Ref.)	RATED CAPACITY	WEIGHT/PC. (Approx.)
STEJ14	1/4"	4"	8-3/16"	12-3/16"	320 lbs.	.46 lbs.
STEJ56	5/16"	4-1/2"	9-5/8"	14-1/8"	500 lbs.	.66 lbs.
STEJ38	3/8"	6"	11-1/2"	17-1/2"	800 lbs.	.84 lbs.
STEJ12	1/2"	6"	14-1/8"	20-3/16"	1,400 lbs.	1.65 lbs.
STEJ58	5/8"	6"	15-13/16"	21-13/16"	2,240 lbs.	2.80 lbs.
STEJ34	3/4"	6"	17-11/16"	23-11/16"	4,000 lbs.	4.25 lbs.

Manufactured to provide maximum corrosion resistance.

STAINLESS STEEL TURNBUCKLES

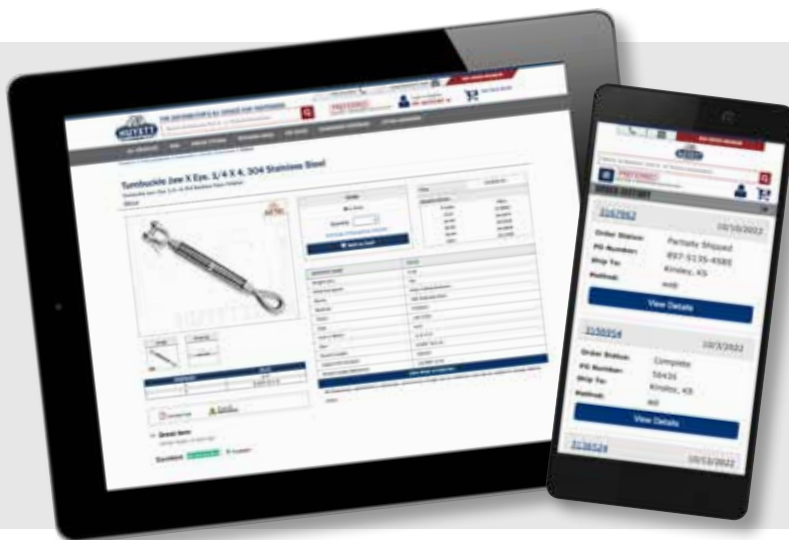
JAW/JAW



Design: Jaw/Jaw
 Process: Cast
 Threads: UNC
 Material: 304 Stainless Steel
 Finish: Polished

ITEM NUMBER	FITTING SHANK DIAMETER (A)	BODY TAKE-UP (B)	OAL CLOSED (C)	OAL OPEN (Ref.)	RATED CAPACITY	WEIGHT/PC. (Approx.)
STDJ14	1/4"	4"	8-3/16"	12-3/16"	320 lbs.	.53 lbs.
STDJ56	5/16"	4-1/2"	9-5/8"	14-1/8"	500 lbs.	.73 lbs.
STDJ38	3/8"	6"	11-1/2"	17-1/2"	800 lbs.	.88 lbs.
STDJ12	1/2"	6"	14-1/8"	20-3/16"	1,400 lbs.	1.74 lbs.
STDJ58	5/8"	6"	15-13/16"	21-13/16"	2,240 lbs.	3.04 lbs.
STDJ34	3/4"	6"	17-11/16"	23-11/16"	4,000 lbs.	4.74 lbs.

Manufactured to provide maximum corrosion resistance.



HUYETT.COM

huyett.com/MyAccount/OrderHistory

- Order Status
- Order Tracking Info
- Expected Ship Date
- Your Favorites



Login or register to find your order and account information in one place.

* Some Exclusions Apply

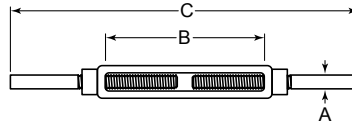
! Turnbuckles are rated with full thread engagement. Use CAUTION to ensure proper installation. Rated capacity refers to a straight (zero degree) pull. Pulling at an angle reduces the rated capacity significantly. See page 5 for more information. Use of substandard components will reduce rated capacity. Open length estimated dependent on amount of full thread engagement at installation before take-up step.

TURNBUCKLES

TURNBUCKLES

TURNBUCKLES

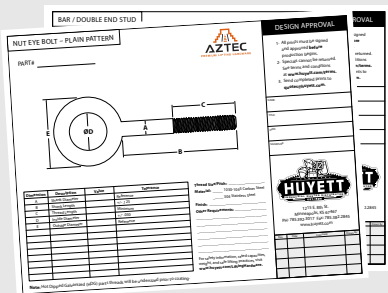
STUB/STUB



Design: Stub/Stub
 Process: Forged
 Threads: UNC
 Material-Body: 1045 Carbon Steel
 Material-Stub: Carbon Steel
 Finish: Self-Colored

ITEM NUMBER	FITTING SHANK DIAMETER (A)	BODY TAKE-UP (B)	OAL CLOSED (C)	OAL OPEN (Ref.)	RATED CAPACITY	WEIGHT/PC. (Approx.)
TSS144	1/4"	4"	9"	13"	500 lbs.	.27 lbs.
TSS516	5/16"	4-1/2"	11"	15"	800 lbs.	.45 lbs.
TSS386	3/8"	6"	16"	20"	1,200 lbs.	.75 lbs.
TSS126	1/2"	6"	16"	21"	2,200 lbs.	1.30 lbs.
TSS129	1/2"	9"	17"	26"	2,200 lbs.	1.65 lbs.
TSS122	1/2"	12"	20"	32"	2,200 lbs.	2.00 lbs.
TSS586	5/8"	6"	16"	22"	3,500 lbs.	2.10 lbs.
TSS589	5/8"	9"	18"	27"	3,500 lbs.	2.70 lbs.
TSS581	5/8"	12"	21"	33"	3,500 lbs.	3.20 lbs.
TSS346	3/4"	6"	17"	23"	5,200 lbs.	3.25 lbs.
TSS349	3/4"	9"	20"	29"	5,200 lbs.	4.00 lbs.
TSS342	3/4"	12"	23"	35"	5,200 lbs.	4.60 lbs.
TSS348	3/4"	18"	28"	46"	5,200 lbs.	6.10 lbs.
TSS786	7/8"	6"	18"	24"	7,200 lbs.	4.75 lbs.
TSS782	7/8"	12"	23"	35"	7,200 lbs.	6.60 lbs.
TSS788	7/8"	18"	29"	47"	7,200 lbs.	8.75 lbs.
TSS160	1"	6"	19"	25"	10,000 lbs.	6.41 lbs.
TSS112	1"	12"	25"	37"	10,000 lbs.	8.90 lbs.
TSS118	1"	18"	30"	48"	10,000 lbs.	11.70 lbs.
TSS124	1"	24"	36"	60"	10,000 lbs.	14.30 lbs.
TSS146	1-1/4"	6"	20"	26"	15,200 lbs.	10.40 lbs.
TSS142	1-1/4"	12"	26"	38"	15,200 lbs.	14.20 lbs.
TSS148	1-1/4"	18"	32"	50"	15,200 lbs.	18.00 lbs.
TSS149	1-1/4"	24"	38"	62"	15,200 lbs.	21.80 lbs.
TSS127	1-1/2"	6"	20"	26"	21,400 lbs.	15.40 lbs.
TSS125	1-1/2"	12"	26-1/2"	39"	21,400 lbs.	20.50 lbs.
TSS128	1-1/2"	18"	33"	51"	21,400 lbs.	26.20 lbs.
TSS130	1-1/2"	24"	38"	60"	21,400 lbs.	31.40 lbs.
TSS138	1-3/4"	18"	34"	52"	28,000 lbs.	36.88 lbs.
TSS134	1-3/4"	24"	40"	64"	28,000 lbs.	43.90 lbs.
TSS224	2"	24"	40"	64"	37,000 lbs.	60.30 lbs.
TSS254	2-1/2"	24"	40"	64"	60,000 lbs.	110.00 lbs.
TSS275	2-3/4"	24"	40"	64"	75,000 lbs.	132.54 lbs.

Manufactured to meet or exceed design requirements as specified in ASTM F1145.



CUSTOM SOLUTIONS

Need a Custom Part?

We have the experience, raw materials, and production services to cut, mill, drill, thread, plate, and finish parts to print.

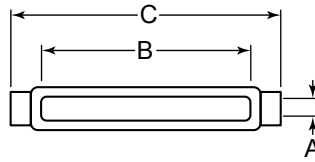
Visit huyett.com/Aztec

! Turnbuckles are rated with full thread engagement. Use CAUTION to ensure proper installation. Rated capacity refers to a straight (zero degree) pull. Pulling at an angle reduces the rated capacity significantly. See page 5 for more information. Use of substandard components will reduce rated capacity. Open length estimated dependent on amount of full thread engagement at installation before take-up step.

TURNBUCKLES

TURNBUCKLES - SELF-COLORED

BODIES



Design: Body Only
 Process: Forged
 Threads: UNC
 Material: 1045 Carbon Steel
 Finish: Self-Colored

ITEM NUMBER	THREAD SIZE (A)	BODY TAKE-UP (B)	LENGTH (C)	RATED CAPACITY	WEIGHT/PC. (Approx.)
TBS144	1/4"	4"	4-3/4"	500 lbs.	.15 lbs.
TBS516	5/16"	4-1/2"	5-1/2"	800 lbs.	.19 lbs.
TBS386	3/8"	6"	7-1/8"	1,200 lbs.	.29 lbs.
TBS126	1/2"	6"	7-1/2"	2,200 lbs.	.60 lbs.
TBS129	1/2"	9"	10-1/2"	2,200 lbs.	.68 lbs.
TBS122	1/2"	12"	13-1/2"	2,200 lbs.	1.00 lbs.
TBS586	5/8"	6"	7-7/8"	3,500 lbs.	.90 lbs.
TBS589	5/8"	9"	10-7/8"	3,500 lbs.	1.18 lbs.
TBS581	5/8"	12"	13-7/8"	3,500 lbs.	1.43 lbs.
TBS346	3/4"	6"	8-1/4"	5,200 lbs.	1.30 lbs.
TBS349	3/4"	9"	11-1/4"	5,200 lbs.	1.75 lbs.
TBS342	3/4"	12"	14-1/4"	5,200 lbs.	2.08 lbs.
TBS348	3/4"	18"	20-1/4"	5,200 lbs.	2.50 lbs.
TBS786	7/8"	6"	8-5/8"	7,200 lbs.	2.00 lbs.
TBS782	7/8"	12"	14-9/16"	7,200 lbs.	2.70 lbs.
TBS788	7/8"	18"	20-9/16"	7,200 lbs.	3.80 lbs.
TBS160	1"	6"	9"	10,000 lbs.	2.90 lbs.
TBS112	1"	12"	15"	10,000 lbs.	3.93 lbs.
TBS118	1"	18"	21"	10,000 lbs.	5.28 lbs.
TBS124	1"	24"	27"	10,000 lbs.	7.38 lbs.
TBS186	1-1/8"	6"	9-1/8"	15,200 lbs.	4.20 lbs.
TBS182	1-1/8"	12"	15-1/8"	15,200 lbs.	5.50 lbs.
TBS146	1-1/4"	6"	9-1/8"	15,200 lbs.	4.00 lbs.
TBS142	1-1/4"	12"	15-1/8"	15,200 lbs.	5.25 lbs.
TBS148	1-1/4"	18"	21-1/8"	15,200 lbs.	7.75 lbs.
TBS149	1-1/4"	24"	27-1/8"	15,200 lbs.	10.17 lbs.
TBS127	1-1/2"	6"	9-3/4"	21,400 lbs.	5.80 lbs.
TBS125	1-1/2"	12"	15-3/4"	21,400 lbs.	8.75 lbs.
TBS128	1-1/2"	18"	21-3/4"	21,400 lbs.	11.00 lbs.
TBS130	1-1/2"	24"	27-3/4"	21,400 lbs.	13.69 lbs.
TBS136	1-3/4"	6"	11"	28,000 lbs.	9.75 lbs.
TBS138	1-3/4"	18"	22-3/8"	28,000 lbs.	16.38 lbs.
TBS134	1-3/4"	24"	28-3/8"	28,000 lbs.	21.25 lbs.
TBS224	2"	24"	29"	37,000 lbs.	27.60 lbs.
TBS254	2-1/2"	24"	31-1/16"	60,000 lbs.	54.00 lbs.
TBS275	2-3/4"	24"	31-1/16"	75,000 lbs.	53.50 lbs.

Manufactured to meet or exceed design requirements as specified in ASTM F1145 for Type 1, Grade 1, Class B.

Your Account Order History at huyett.com includes:



Order Status



Expected Ship Date



Quantity Breaks



Order Tracking Info



Your Favorites



Customer Specific Pricing

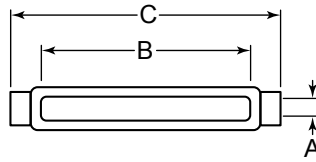


Turnbuckles are rated with full thread engagement. Use CAUTION to ensure proper installation. Rated capacity refers to a straight (zero degree) pull. Pulling at an angle reduces the rated capacity significantly. See page 5 for more information. Use of substandard components will reduce rated capacity. Galvanized Turnbuckle Bodies have standard tap. Oversize tap available on most sizes. Contact sales@huyett.com for more details.

TURNBUCKLES

TURNBUCKLES - HOT DIPPED GALVANIZED

BODIES



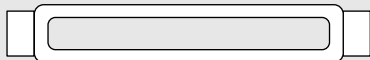
Design: Body Only
 Process: Forged
 Threads: UNC
 Material: 1045 Carbon Steel
 Finish: Hot Dipped Galvanized

ITEM NUMBER	THREAD SIZE (A)	BODY TAKE-UP (B)	LENGTH (C)	RATED CAPACITY	WEIGHT/PC. (Approx.)
TBG144	1/4"	4"	4-3/4"	500 lbs.	.15 lbs.
TBG516	5/16"	4-1/2"	5-1/2"	800 lbs.	.19 lbs.
TBG386	3/8"	6"	7-1/8"	1,200 lbs.	.29 lbs.
TBG126	1/2"	6"	7-1/2"	2,200 lbs.	.60 lbs.
TBG129	1/2"	9"	10-1/2"	2,200 lbs.	.68 lbs.
TBG122	1/2"	12"	13-1/2"	2,200 lbs.	1.00 lbs.
TBG586	5/8"	6"	7-7/8"	3,500 lbs.	.90 lbs.
TBG589	5/8"	9"	10-7/8"	3,500 lbs.	1.18 lbs.
TBG581	5/8"	12"	13-7/8"	3,500 lbs.	1.43 lbs.
TBG346	3/4"	6"	8-1/4"	5,200 lbs.	1.30 lbs.
TBG349	3/4"	9"	11-1/4"	5,200 lbs.	1.75 lbs.
TBG342	3/4"	12"	14-1/4"	5,200 lbs.	2.08 lbs.
TBG348	3/4"	18"	20-1/4"	5,200 lbs.	2.50 lbs.
TBG786	7/8"	6"	8-5/8"	7,200 lbs.	2.00 lbs.
TBG782	7/8"	12"	14-9/16"	7,200 lbs.	2.70 lbs.
TBG788	7/8"	18"	20-9/16"	7,200 lbs.	3.80 lbs.
TBG160	1"	6"	9"	10,000 lbs.	2.90 lbs.
TBG112	1"	12"	15"	10,000 lbs.	3.93 lbs.
TBG118	1"	18"	21"	10,000 lbs.	5.28 lbs.
TBG124	1"	24"	27"	10,000 lbs.	7.38 lbs.
TBG186	1-1/8"	6"	9-1/8"	15,200 lbs.	4.20 lbs.
TBG146	1-1/4"	6"	9-1/8"	15,200 lbs.	4.00 lbs.
TBG142	1-1/4"	12"	15-1/8"	15,200 lbs.	5.25 lbs.
TBG148	1-1/4"	18"	21-1/8"	15,200 lbs.	7.75 lbs.
TBG149	1-1/4"	24"	27-1/8"	15,200 lbs.	10.17 lbs.
TBG127	1-1/2"	6"	9-3/4"	21,400 lbs.	5.80 lbs.
TBG125	1-1/2"	12"	15-3/4"	21,400 lbs.	8.75 lbs.
TBG128	1-1/2"	18"	21-3/4"	21,400 lbs.	11.00 lbs.
TBG130	1-1/2"	24"	27-3/4"	21,400 lbs.	13.69 lbs.
TBG138	1-3/4"	18"	22-3/8"	28,000 lbs.	16.38 lbs.
TBG134	1-3/4"	24"	28-3/8"	28,000 lbs.	21.25 lbs.
TBG224	2"	24"	29"	37,000 lbs.	27.60 lbs.
TBG254	2-1/2"	24"	31-1/16"	60,000 lbs.	54.00 lbs.
TBG275	2-3/4"	24"	31-1/16"	75,000 lbs.	53.50 lbs.

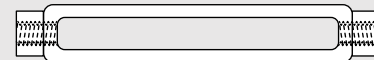
Manufactured to meet or exceed design requirements as specified in ASTM F1145 for Type 1, Grade 1, Class B with additional coating for increased corrosion resistance.

CLASSES OF TURNBUCKLES

ASTM F1145 defines performance requirements for Type 1, Grade 1 turnbuckles in the following classes:



Class A: Turnbuckle bodies without end pulls or threaded heads



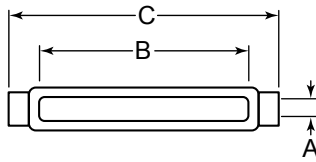
Class B: Turnbuckle bodies without end pulls threaded with right and left hand heads

! Turnbuckles are rated with full thread engagement. Use CAUTION to ensure proper installation. Rated capacity refers to a straight (zero degree) pull. Pulling at an angle reduces the rated capacity significantly. See page 5 for more information. Use of substandard components will reduce rated capacity. Galvanized Turnbuckle Bodies have standard tap. Oversize tap available on most sizes. Contact sales@huyett.com for more details.

TURNBUCKLES

STAINLESS STEEL TURNBUCKLES

BODIES



Design: Body Only
 Process: Cast
 Threads: UNC
 Material: 304 Stainless Steel
 Finish: Polished

ITEM NUMBER	THREAD SIZE (A)	BODY TAKE-UP (B)	LENGTH (C)	RATED CAPACITY	WEIGHT/PC. (Approx.)
STB144	1/4"	4"	4-3/4"	320 lbs.	.15 lbs.
STB516	5/16"	4-1/2"	5-7/16"	500 lbs.	.19 lbs.
STB386	3/8"	6"	7-1/8"	800 lbs.	.29 lbs.
STB126	1/2"	6"	7-1/2"	1,400 lbs.	.60 lbs.
STB586	5/8"	6"	7-7/8"	2,240 lbs.	.90 lbs.
STB346	3/4"	6"	8-1/4"	3,200 lbs.	1.30 lbs.
STB786	7/8"	6"	8-5/8"	7,200 lbs.	2.00 lbs.
STB160	1"	6"	9"	10,000 lbs.	2.90 lbs.

Manufactured to provide maximum corrosion resistance.

TURNBUCKLE ENDS - HOT DIPPED GALVANIZED

HOOK

LEFT HAND

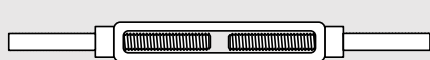


RIGHT HAND

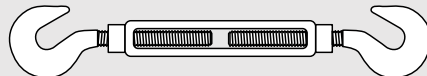


ITEM NUMBER	THREAD SIZE (A)	FOR TAKE-UP (B)
LHH144	1/4"	4"
LHH386	3/8"	6"
LHH122	1/2"	12"
LHH126	1/2"	6"
LHH516	1/2"	6"
LHH129	1/2"	9"
LHH581	5/8"	12"
LHH586	5/8"	6"
LHH589	5/8"	9"
LHH348	3/4"	18"
LHH346	3/4"	6"
LHH349	3/4"	9"
LHH782	7/8"	12"
LHH124	1"	24"

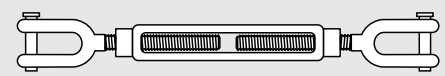
ITEM NUMBER	THREAD SIZE (A)	FOR TAKE-UP (B)
RHH144	1/4"	4"
RHH516	5/16"	4.5"
RHH386	3/8"	6"
RHH122	1/2"	12"
RHH126	1/2"	6"
RHH129	1/2"	9"
RHH581	5/8"	12"
RHH586	5/8"	6"
RHH342	3/4"	12"
RHH348	3/4"	18"
RHH346	3/4"	6"
RHH782	7/8"	12"
RHH112	1"	12"
RHH124	1"	24"



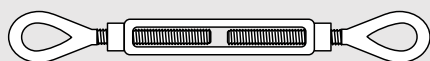
Class C: Stub/Stub



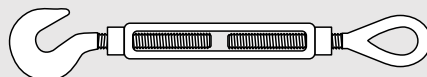
Class E: Hook/Hook



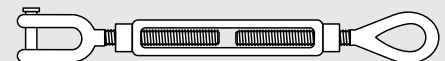
Class G: Jaw/Jaw



Class D: Eye/Eye



Class F: Hook/Eye



Class H: Jaw/Eye

! Turnbuckles are rated with full thread engagement. Use CAUTION to ensure proper installation. Rated capacity refers to a straight (zero degree) pull. Pulling at an angle reduces the rated capacity significantly. See page 5 for more information. Use of substandard components will reduce rated capacity.

TURNBUCKLES

TURNBUCKLE ENDS - HOT DIPPED GALVANIZED

EYE

LEFT HAND



ITEM NUMBER	THREAD SIZE (A)	FOR TAKE-UP (B)
LHE144	1/4"	4"
LHE516	5/16"	4-1/2"
LHE386	3/8"	6"
LHE126	1/2"	6"
LHE129	1/2"	9"
LHE122	1/2"	12"
LHE589	5/8"	9"
LHE581	5/8"	12"
LHE342	3/4"	12"
LHE348	3/4"	18"
LHE346	3/4"	6"
LHE349	3/4"	9"
LHE782	7/8"	12"
LHE118	1"	18"
LHE124	1"	24"
LHE160	1"	6"
LHE142	1-1/4"	12"
LHE149	1-1/4"	24"
LHE125	1-1/2"	12"
LHE128	1-1/2"	18"
LHE138	1-3/4"	18"
LHE134	1-3/4"	24"
LHE254	2-1/2"	24"

RIGHT HAND



ITEM NUMBER	THREAD SIZE (A)	FOR TAKE-UP (B)
RHE144	1/4"	4"
RHE516	5/16"	4-1/2"
RHE386	3/8"	6"
RHE126	1/2"	6"
RHE129	1/2"	9"
RHE122	1/2"	12"
RHE581	5/8"	12"
RHE586	5/8"	6"
RHE589	5/8"	9"
RHE342	3/4"	12"
RHE348	3/4"	18"
RHE346	3/4"	6"
RHE349	3/4"	9"
RHE782	7/8"	12"
RHE786	7/8"	6"
RHE112	1"	12"
RHE124	1"	24"
RHE160	1"	6"
RHE142	1-1/4"	12"
RHE148	1-1/4"	18"
RHE149	1-1/4"	24"
RHE138	1-3/4"	18"
RHE254	2-1/2"	24"

STAINLESS STEEL TURNBUCKLE ENDS

EYE

LEFT HAND



ITEM NUMBER	THREAD SIZE (A)	FOR TAKE-UP (B)
LHE516-S	5/16"	4-1/2"
LHE386-S	3/8"	6"
LHE126-S	1/2"	6"
LHE346-S	3/4"	6"

RIGHT HAND



ITEM NUMBER	THREAD SIZE (A)	FOR TAKE-UP (B)
RHE516-S	5/16"	4-1/2"
RHE386-S	3/8"	6"
RHE126-S	1/2"	6"
RHE346-S	3/4"	6"

TURNBUCKLES



KNOWLEDGE VAULT

Discover a wealth of information related to the manufacture and uses of fasteners, including product training, best practices, and the most comprehensive catalogs in the industry.

* Some Exclusions Apply

TURNBUCKLES

TURNBUCKLE ENDS - HOT DIPPED GALVANIZED

JAW

LEFT HAND



RIGHT HAND



	ITEM NUMBER	THREAD SIZE (A)	FOR TAKE-UP (B)
NUT	LHJ144	1/4"	4"
	LHJ516	5/16"	4-1/2"
	LHJ386	3/8"	6"
	LHJ126	1/2"	6"
	LHJ581	5/8"	12"
	LHJ586	5/8"	6"
PIN & COTTER	LHJ342	3/4"	12"
	LHJ346	3/4"	6"
	LHJ349	3/4"	9"
	LHJ782	7/8"	12"
	LHJ788	7/8"	18"
	LHJ786	7/8"	6"
	LHJ112	1"	12"
	LHJ118	1"	18"
	LHJ124	1"	24"
	LHJ160	1"	6"
	LHJ142	1-1/4"	12"
	LHJ128	1-1/2"	18"
	LHJ130	1-1/2"	24"
	LHJ138	1-3/4"	18"
	LHJ134	1-3/4"	24"
	LHJ224	2"	24"
	LHJ254	2-1/2"	24"

	ITEM NUMBER	THREAD SIZE (A)	FOR TAKE-UP (B)
NUT	RHJ144	1/4"	4"
	RHJ386	3/8"	6"
	RHJ122	1/2"	12"
	RHJ126	1/2"	6"
	RHJ129	1/2"	9"
	RHJ581	5/8"	12"
	RHJ586	5/8"	6"
	RHJ589	5/8"	9"
	PIN & COTTER	RHJ342	3/4"
RHJ348		3/4"	18"
RHJ346		3/4"	6"
RHJ349		3/4"	9"
RHJ782		7/8"	12"
RHJ788		7/8"	18"
RHJ786		7/8"	6"
RHJ112		1"	12"
RHJ118		1"	18"
RHJ124		1"	24"
RHJ160		1"	6"
RHJ142		1-1/4"	12"
RHJ148		1-1/4"	18"
RHJ149		1-1/4"	24"
RHJ128		1-1/2"	18"
RHJ138	1-3/4"	18"	
RHJ134	1-3/4"	24"	
RHJ224	2"	24"	
RHJ254	2-1/2"	24"	

Forged Jaw Ends are fitted with bolts and nuts for 1/4" to 5/8", and pins and cotters for 3/4" to 2-3/4" sizes.

BOLT AND NUT DESIGN



STAINLESS STEEL TURNBUCKLE ENDS

JAW

LEFT HAND



RIGHT HAND



	ITEM NUMBER	THREAD SIZE (A)	FOR TAKE-UP (B)
	LHJ386-S	3/8"	6"
	LHJ126-S	1/2"	6"

	ITEM NUMBER	THREAD SIZE (A)	FOR TAKE-UP (B)
	RHJ126-S	1/2"	6"
	RHJ346-S	3/4"	6"

TURNBUCKLE ENDS

BOLT PINS



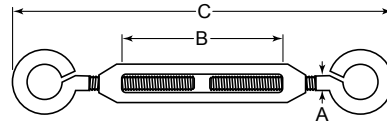
ITEM NUMBER	THREAD SIZE	TURNBUCKLE SIZE
TSBP38	5/16"	3/8"
TSBP12	3/8"	1/2"
TSBP58	1/2"	5/8"
TSBP34	5/8"	3/4"
TSBP78	3/4"	7/8"
TSBP01	7/8"	1"

TURNBUCKLES

TURNBUCKLES

DIE CAST TURNBUCKLES

EYE/EYE



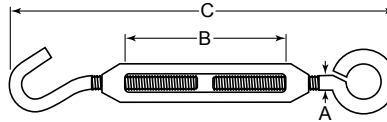
Design: Eye/Eye
 Process-Body: Cast
 Process-Fittings: Formed Wire
 Threads: UNC
 Material-Body: Malleable Iron
 Material-Fittings: 1010 Carbon Steel
 Finish: Zinc



ITEM NUMBER	FITTING SHANK DIAMETER (A)	BODY TAKE-UP (B)	OAL CLOSED (C)	OAL OPEN (Ref.)	RATED CAPACITY	WEIGHT/PC. (Approx.)
TCE532	5/32"	1-3/8"	3-3/8"	4-13/16"	NA	.04 lbs.
TCE316	3/16"	1-5/8"	3-7/8"	5-5/8"	NA	.06 lbs.
TCE732	7/32"	2"	4-7/16"	6-9/16"	NA	.08 lbs.
TCE014	1/4"	2-1/2"	5-1/4"	7-7/8"	NA	.14 lbs.
TCE516	5/16"	2-13/16"	6-3/16"	9-3/16"	NA	.24 lbs.
TCE038	3/8"	3-1/8"	6-15/16"	10-5/16"	NA	.34 lbs.

DIE CAST TURNBUCKLES

EYE/HOOK



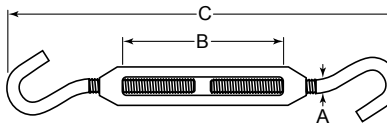
Design: Eye/Hook
 Process-Body: Cast
 Process-Fittings: Formed Wire
 Threads: UNC
 Material-Body: Malleable Iron
 Material-Fittings: 1010 Carbon Steel
 Finish: Zinc



ITEM NUMBER	FITTING SHANK DIAMETER (A)	BODY TAKE-UP (B)	OAL CLOSED (C)	OAL OPEN (Ref.)	RATED CAPACITY	WEIGHT/PC. (Approx.)
TCH532	5/32"	1-3/8"	3-3/8"	4-13/16"	NA	.04 lbs.
TCH316	3/16"	1-5/8"	3-7/8"	5-5/8"	NA	.06 lbs.
TCH732	7/32"	2"	4-7/8"	6-9/16"	NA	.08 lbs.
TCH014	1/4"	2-1/2"	5-1/4"	7-7/8"	NA	.14 lbs.
TCH516	5/16"	2-13/16"	6-3/16"	9-3/16"	NA	.24 lbs.
TCH038	3/8"	3-1/8"	6-15/16"	10-5/16"	NA	.34 lbs.

DIE CAST TURNBUCKLES

HOOK/HOOK



Design: Hook/Hook
 Process-Body: Cast
 Process-Fittings: Formed Wire
 Threads: UNC
 Material-Body: Malleable Iron
 Material-Fittings: 1010 Carbon Steel
 Finish: Zinc

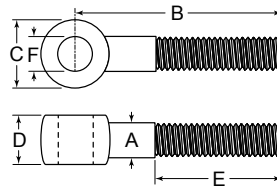


ITEM NUMBER	FITTING SHANK DIAMETER (A)	BODY TAKE-UP (B)	OAL CLOSED (C)	OAL OPEN (Ref.)	RATED CAPACITY	WEIGHT/PC. (Approx.)
THH316	3/16"	1-5/8"	3-7/8"	5-5/8"	NA	.06 lbs.
THH732	7/32"	2"	4-7/16"	6-9/16"	NA	.08 lbs.
THH014	1/4"	2-1/2"	5-1/4"	7-7/8"	NA	.14 lbs.
THH056	5/16"	2-13/16"	6-3/16"	9-3/16"	NA	.24 lbs.
THH038	3/8"	3-1/8"	6-15/16"	10-5/16"	NA	.34 lbs.

ROD ENDS

ROD ENDS

MACHINED TO ORDER



Process: Forged
 Threads: Blank / Custom Threaded
 Material: 1045 Carbon Steel
 Finish: Self-Colored (other finishes available online)

ITEM NUMBER	SHANK DIAMETER (A)	LENGTH (from Center of Eye) (B)	HEAD DIAMETER (C)	HEAD THICKNESS(D)	WEIGHT/PC. (Approx.)
RE0386	3/8"	6"	11/16"	7/16"	.24 lbs.
RE0126	1/2"	6"	15/16"	9/16"	.45 lbs.
RE0586	5/8"	6"	1-3/16"	11/16"	.72 lbs.
RE0582	5/8"	12"	1-3/16"	11/16"	1.30 lbs.
RE0346	3/4"	6"	1-7/16"	13/16"	1.10 lbs.
RE0342	3/4"	12"	1-7/16"	13/16"	1.97 lbs.
RE0786	7/8"	6"	1-11/16"	15/16"	1.60 lbs.
RE0782	7/8"	12"	1-11/16"	15/16"	2.60 lbs.
RE0012	1"	12"	2"	1"	3.50 lbs.
RE1142	1-1/4"	12"	2-1/2"	1-1/4"	5.70 lbs.

Manufactured from forged medium carbon steel, exceeding SAE J493 requirements.
 Rod Ends are available as blanks or custom made to order. Contact sales@huyett.com for more details.

ROD ENDS

THREAD DESCRIPTION

1/4" - 20 EXTERNAL THREADS – CLASS 2A



Thread Size

Thread size (diameter) is measured on the outside of threads. It is measured in inches for U.S. fasteners (except for small diameters, where diameters are numbered), and in millimeters for metric fasteners (abbreviated mm or prefixed by M).

Thread Pitch

Thread pitch (thread count) refers to the distance "peak-to-peak" of each thread. Threads grouped close together are considered to be "fine," while threads that are spread out are "coarse."

U.S. fasteners specify thread count as threads per inch (TPI). A 20 means the fastener has 20 TPI. Metric fasteners specify a thread pitch which is the distance between the threads. A fastener with a thread pitch of M2 has 2 millimeters between each thread.

Thread Series

Thread series is the thread style of a given fastener. There are many different thread series and each has specific attributes.

COMMON THREAD SERIES

UNC

Unified National Coarse Thread
 A common mechanical thread type used in the U.S. for screws and bolts.
 • Parallel Thread

UNF

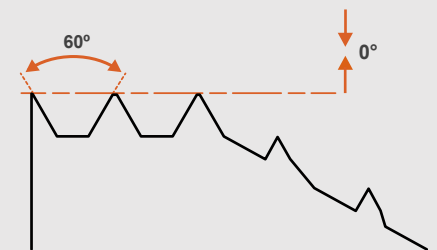
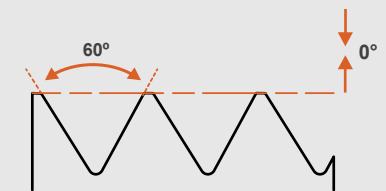
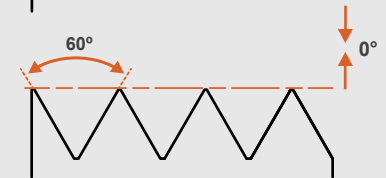
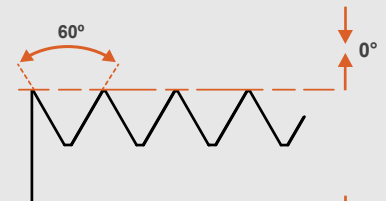
Unified National Fine Thread
 A common mechanical thread type used in the U.S. for screws and bolts.
 • Parallel Thread

METRIC

Metric Coarse Thread
 The most commonly used type of general-purpose thread series in the world and one of the first agreed upon standards when ISO was set up in 1947.
 • Parallel Thread

LAG SCREW

American National Standard
 A common thread type used in the U.S. for wood screws and bolts.
 • Parallel Thread
 • Spaced Threads
 • Cone or Gimlet Point

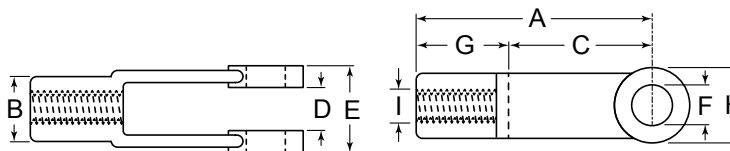


! See Safe Lifting Chart on page 5. All rated capacities consider a straight vertical lift.
 Use CAUTION when lifting. Any angle beyond vertical (zero degree) will reduce the rated capacity.
 Full shank thread.

CLEVIS/YOKES

ADJUSTABLE YOKE ENDS

FORGED



Process: Forged
 Threads: See Thread Pitch
 Material: 1020 Carbon Steel
 Finish: Self-Colored (other finishes available online)

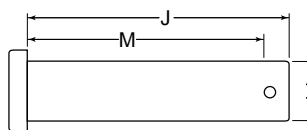
CLEVIS/YOKES

	ITEM NUMBER	THREAD SIZE/PITCH	(A)	(B)	(C)	(D)	(E)	(F)	(G)	(H)	WEIGHT/PC. (Approx.)
RIGHT HAND	YK14-28	1/4"-28	2"	7/16"	1-1/4"	1/4"	5/8"	1/4"	3/4"	1/2"	.07 lbs.
	YK14-20	1/4"-20	2"	7/16"	1-1/4"	1/4"	5/8"	1/4"	3/4"	1/2"	.07 lbs.
	YK56-24	5/16"-24	2-1/4"	1/2"	1-7/16"	5/16"	3/4"	5/16"	13/16"	9/16"	.10 lbs.
	YK56-18	5/16"-18	2-1/4"	1/2"	1-7/16"	5/16"	3/4"	5/16"	13/16"	9/16"	.10 lbs.
	YK38-24	3/8"-24	2-1/2"	5/8"	1-5/8"	7/16"	7/8"	3/8"	7/8"	11/16"	.17 lbs.
	YK38-16	3/8"-16	2-1/2"	5/8"	1-5/8"	7/16"	7/8"	3/8"	7/8"	11/16"	.17 lbs.
	YK12-13	1/2"-13	3"	13/16"	1-7/8"	9/16"	1-1/8"	1/2"	1-1/8"	15/16"	.32 lbs.
	YK12-20	1/2"-20	3"	13/16"	1-7/8"	9/16"	1-1/8"	1/2"	1-1/8"	15/16"	.32 lbs.
	YK58-11	5/8"-11	4-15/16"	1-1/16"	3-11/16"	11/16"	1-3/8"	5/8"	1-1/4"	1-3/16"	.80 lbs.
	YK58-18	5/8"-18	4-15/16"	1-1/16"	3-11/16"	11/16"	1-3/8"	5/8"	1-1/4"	1-3/16"	.80 lbs.
YK34-10	3/4"-10	6-1/16"	1-1/4"	4-9/16"	13/16"	1-5/8"	3/4"	1-1/2"	1-7/16"	1.47 lbs.	
YK34-16	3/4"-16	6-1/16"	1-1/4"	4-9/16"	13/16"	1-5/8"	3/4"	1-1/2"	1-7/16"	1.47 lbs.	
LEFT HAND	YK14-28-LH	1/4"-28	2"	7/16"	1-1/4"	1/4"	5/8"	1/4"	3/4"	1/2"	.07 lbs.
	YK14-20-LH	1/4"-20	2"	7/16"	1-1/4"	1/4"	5/8"	1/4"	3/4"	1/2"	.07 lbs.
	YK56-24-LH	5/16"-24	2-1/4"	1/2"	1-7/16"	5/16"	3/4"	5/16"	13/16"	9/16"	.10 lbs.
	YK56-18-LH	5/16"-18	2-1/4"	1/2"	1-7/16"	5/16"	3/4"	5/16"	13/16"	9/16"	.10 lbs.
	YK38-24-LH	3/8"-24	2-1/2"	5/8"	1-5/8"	7/16"	7/8"	3/8"	7/8"	11/16"	.17 lbs.
	YK38-16-LH	3/8"-16	2-1/2"	5/8"	1-5/8"	7/16"	7/8"	3/8"	7/8"	11/16"	.17 lbs.
	YK12-13-LH	1/2"-13	3"	13/16"	1-7/8"	9/16"	1-1/8"	1/2"	1-1/8"	15/16"	.32 lbs.
	YK12-20-LH	1/2"-20	3"	13/16"	1-7/8"	9/16"	1-1/8"	1/2"	1-1/8"	15/16"	.32 lbs.
	YK58-11-LH	5/8"-11	4-15/16"	1-1/16"	3-11/16"	11/16"	1-3/8"	5/8"	1-1/4"	1-3/16"	.80 lbs.
	YK58-18-LH	5/8"-18	4-15/16"	1-1/16"	3-11/16"	11/16"	1-3/8"	5/8"	1-1/4"	1-3/16"	.80 lbs.
YK34-10-LH	3/4"-10	6-1/16"	1-1/4"	4-9/16"	13/16"	1-5/8"	3/4"	1-1/2"	1-7/16"	1.47 lbs.	
YK34-16-LH	3/4"-16	6-1/16"	1-1/4"	4-9/16"	13/16"	1-5/8"	3/4"	1-1/2"	1-7/16"	1.47 lbs.	

Manufactured to meet or exceed the design requirements as specified within SAE J493. Clevis pins sold separately.

YOKE PINS/CLEVIS PINS

HEADED



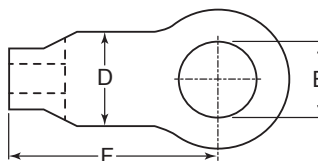
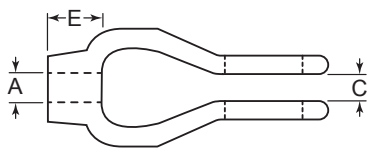
Process: Headed
 Material: Carbon Steel
 Finish: Self-Colored (other finishes available online)

ITEM NUMBER	DIAMETER (I)	SHANK LENGTH (J)	EFFECTIVE LENGTH (M)	WEIGHT/ C (Approx.)
CLP-0250-0875/B	1/4"	7/8"	11/16"	1.50 lbs.
CLP-0312-1000/B	5/16"	1"	3/4"	2.40 lbs.
CLP-0375-1093/B	3/8"	1-1/16"	15/16"	4.00 lbs.
CLP-0500-1421/B	1/2"	1-7/16"	1-3/16"	9.00 lbs.
CLP-0625-1750/B	5/8"	1-3/4"	1-1/2"	18.10 lbs.
CLP-0750-2000/B	3/4"	2"	1-3/4"	28.80 lbs.
CLP-0875-2500/B	7/8"	2-1/2"	2-3/16"	47.50 lbs.
CLP-1000-2625/B	1"	2-5/8"	2-5/16"	67.50 lbs.
CLP-1250-3000	1-1/4"	3"	2-7/8"	118.00 lbs.
CLP-1500-3000	1-1/2"	3"	2-7/8"	200.00 lbs.
CLP-1750-3000	1-3/4"	3"	2-7/8"	285.00 lbs.

CLEVIS/YOKES

BLANK CLEVISES

FORGED



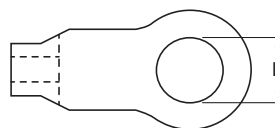
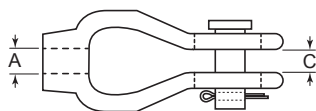
Process: Forged
Material: 1020 Carbon Steel
Finish: Self-Colored

ITEM NUMBER	SIZE	MAX TAP (A)	MAX PIN DIA. (B)	MAX GRIP (C)	WIDTH (D)	THREAD DEPTH (E)	LENGTH (F)	RATED CAPACITY	WEIGHT/PC. (Approx.)
CLV002	#2	5/8"	3/4"	5/8"	1-1/16"	5/8"	4-1/2"	3,500 lbs.	1.00 lbs.
CLV025	#2-1/2	7/8"	1-1/2"	7/8"	1-1/4"	1-1/8"	5-1/8"	7,500 lbs.	2.50 lbs.
CLV003	#3	1-3/8"	1-3/4"	1-3/8"	1-1/2"	1-5/16"	6-5/16"	15,000 lbs.	4.80 lbs.

Manufactured to meet or exceed performance requirements as specified within ANSI/MSS SP-58.

FINISHED CLEVISES - IN STOCK

FORGED



Process: Forged
Material: Carbon Steel
Finish: Self-Colored (other finishes available online)

	ITEM NUMBER	SIZE	TAP (A) (Right/Left)	PIN HOLE (B)	GRIP (C)	PIN DIAMETER (Included)	RATED CAPACITY	WEIGHT/PC. (Approx.)
RH	CLV002-12FR	#2	1/2"-13 RH	9/16"	1/2"	1/2"	3,500 lbs.	1.00 lbs.
	CLV002-58FR	#2	5/8"-11 RH	11/16"	5/8"	5/8"	3,500 lbs.	1.00 lbs.
	CLV025-34FR	#2-1/2	3/4"-10 RH	13/16"	3/4"	3/4"	7,500 lbs.	2.50 lbs.
	CLV003-01FR	#3	1"-8 RH	1-1/16"	1"	1"	15,000 lbs.	4.80 lbs.
LH	CLV002-12FL	#2	1/2"-13 LH	9/16"	1/2"	1/2"	3,500 lbs.	1.00 lbs.
	CLV002-58FL	#2	5/8"-11 LH	11/16"	5/8"	5/8"	3,500 lbs.	1.00 lbs.
	CLV025-34FL	#2-1/2	3/4"-10 LH	13/16"	3/4"	3/4"	7,500 lbs.	2.50 lbs.
	CLV003-01FL	#3	1"-8 LH	1-1/16"	1"	1"	15,000 lbs.	4.80 lbs.

Complete with corresponding clevis pin and cotter pin.
Galvanized options available with oversized tapping capabilities. Visit huyett.com for a complete listing of in stock and custom items

CLEVIS/YOKES



HUYETT PINS CATALOG

Includes a complete line of Clevis, Three-Point, Positive Lock, Cotter, Hitch Pin Clips, Wire Forms, Dowel, Grooved, Spring, Taper, and More.

274 PAGES!



Over 14,000 pins and wire forms in every size and shape you can imagine in a wide range of materials in both inch and metric sizes. Available in low quantities and assortments. We've also included specifications and technical data to help you choose the right part for your application.

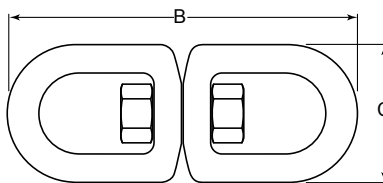
Visit huyett.com to request or download a copy today.

⚠️ Rated capacity refers to a straight (zero degree) pull. Pulling at an angle reduces the rated capacity significantly. See page 5 for more information. Use of substandard components will reduce rated capacity.

SHACKLES/HOOKS

STAINLESS STEEL SWIVEL

EYE/EYE



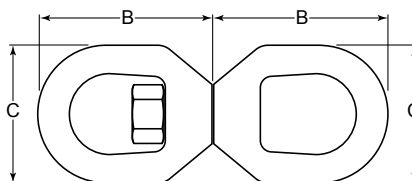
Design: Eye/Eye
 Process: Cast
 Material: 304 Stainless Steel
 Finish: Polished

ITEM NUMBER	SIZE	TOTAL LENGTH (B)	WIDTH (C)	RATED CAPACITY	WEIGHT/PC. (Approx.)
SSE316	3/16"	2-5/16"	7/8"	300 lbs.	.08 lbs.
SSE014	1/4"	3-3/8"	1-1/4"	600 lbs.	.21 lbs.
SSE516	5/16"	4-1/8"	1-5/8"	1,100 lbs.	.39 lbs.
SSE038	3/8"	5"	2"	1,540 lbs.	.71 lbs.
SSE012	1/2"	6-3/8"	2-1/2"	2,640 lbs.	1.32 lbs.

Manufactured to provide maximum corrosion resistance.

SWIVEL

EYE/EYE



Design: Eye Nut with Welded Stud
 Process: Forged
 Material: 1045 Carbon Steel
 Finish: Hot Dipped Galvanized

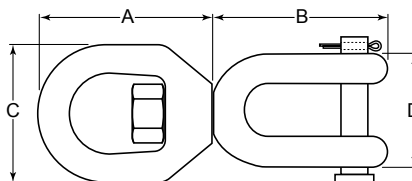
ITEM NUMBER	SIZE	EYE LENGTH (B)	EYE WIDTH (C)	RATED CAPACITY	WEIGHT/PC. (Approx.)
SWV014	1/4"	1-11/16"	1-1/4"	850 lbs.	.21 lbs.
SWV516	5/16"	2-1/16"	1-5/8"	1,250 lbs.	.39 lbs.
SWV038	3/8"	2-1/2"	2	2,250 lbs.	.75 lbs.
SWV012	1/2"	3-3/16"	2-1/2"	3,600 lbs.	1.43 lbs.
SWV058	5/8"	3-7/8"	3	5,200 lbs.	2.50 lbs.
SWV034	3/4"	4-5/16"	3-1/2"	7,200 lbs.	4.13 lbs.

Manufactured to meet or exceed rated capacities as specified within RR-C-271, Type VII - Class 2.
 For ID or other measurements see Lifting Eye Nuts on page 10.
 Minimum breaking strength is 5x the rated capacity.

SHACKLES/HOOKS

SWIVEL

EYE/JAW



Design: Eye Nut/ Jaws with Welded Stud
 Process: Forged
 Material: 1045 Carbon Steel
 Finish: Hot Dipped Galvanized

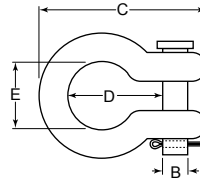
ITEM NUMBER	SIZE	EYE LENGTH (A)	JAW LENGTH (B)	EYE WIDTH (C)	JAW WIDTH (D)	RATED CAPACITY	WEIGHT/PC. (Approx.)
SWV014-JE	1/4"	1-11/16"	1-9/16"	1-1/4"	1"	850 lbs.	.21 lbs.
SWV516-JE	5/16"	2-1/16"	1-13/16"	1-5/8"	1-1/8"	1,250 lbs.	.39 lbs.
SWV038-JE	3/8"	2-1/2"	2-1/4"	2"	1-7/16"	2,250 lbs.	.75 lbs.
SWV012-JE	1/2"	3-3/16"	2-7/8"	2-1/2"	1-3/4"	3,600 lbs.	1.43 lbs.
SWV058-JE	5/8"	3-7/8"	3-7/16"	3"	2-1/16"	5,200 lbs.	2.50 lbs.

Manufactured to meet or exceed rated capacities as specified within RR-C-271d Type VII - Class 3.
 For ID or other measurements see Lifting Eye Nuts on page 10.
 Minimum breaking strength is 5x the rated capacity.

SHACKLES/HOOKS

ANCHOR SHACKLES - HOT DIPPED GALVANIZED

ROUND PIN



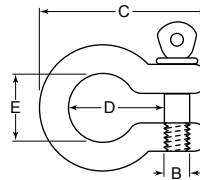
Design: Round Pin
 Process: Forged
 Material: 1045 Carbon Steel
 Finish: Hot Dipped Galvanized

ITEM NUMBER	SIZE	PIN DIAMETER (B)	OVERALL HEIGHT (C)	INSIDE HEIGHT (D)	INSIDE MAX ID (E)	RATED CAPACITY		WEIGHT/PC. (Approx.)
						(lbs.)	(tons)	
RPS316	3/16"	1/4"	1-1/2"	7/8"	5/8"	660 lbs.	.33 tons	.06 lbs.
RPS014	1/4"	5/16"	1-13/16"	1-1/8"	13/16"	1,000 lbs.	.50 tons	.13 lbs.
RPS516	5/16"	3/8"	2-1/16"	1-3/16"	13/16"	1,500 lbs.	.75 tons	.17 lbs.
RPS038	3/8"	7/16"	2-1/2"	1-7/16"	1"	2,000 lbs.	1.00 tons	.25 lbs.
RPS012	1/2"	5/8"	3-1/4"	1-7/8"	1-5/16"	4,000 lbs.	2.00 tons	.70 lbs.
RPS058	5/8"	3/4"	4-3/16"	2-3/8"	1-11/16"	6,500 lbs.	3.25 tons	1.50 lbs.
RPS034	3/4"	7/8"	5"	2-13/16"	2"	9,500 lbs.	4.75 tons	2.30 lbs.
RPS078	7/8"	1"	5-13/16"	3-5/16"	2-1/2"	13,000 lbs.	6.50 tons	3.40 lbs.
RPS001	1"	1-1/8"	6-9/16"	3-3/4"	2-11/16"	17,000 lbs.	8.50 tons	5.00 lbs.
RPS114	1-1/4"	1-3/8"	8-1/4"	4-11/16"	3-1/4"	24,000 lbs.	12.00 tons	9.80 lbs.
RPS112	1-1/2"	1-3/4"	10"	5-3/4"	3-7/8"	34,000 lbs.	17.00 tons	17.25 lbs.
RPS002	2"	2-1/4"	13-11/16"	7-3/4"	5-3/4"	70,000 lbs.	35.00 tons	46.00 lbs.

Manufactured to meet or exceed rated capacities as specified within RR-C-271d Type IVA, Grade A - Class 1. Safety factor is 2x the Rated Capacity. Minimum breaking strength is 6x Rated Capacity.

ANCHOR SHACKLES - SELF-COLORED

SCREW PIN



Design: Screw Pin
 Process: Forged
 Material: 1045 Carbon Steel
 Finish: Self-Colored

ITEM NUMBER	SIZE	PIN DIAMETER (B)	OVERALL HEIGHT (C)	INSIDE HEIGHT (D)	INSIDE MAX ID (E)	RATED CAPACITY		WEIGHT/PC. (Approx.)
						(lbs.)	(tons)	
SPS316	3/16"	1/4"	1-1/2"	7/8"	11/16"	660 lbs.	.33 tons	.06 lbs.
SPS014	1/4"	5/16"	1-13/16"	1-1/8"	13/16"	1,000 lbs.	.50 tons	.12 lbs.
SPS516	5/16"	3/8"	2-1/16"	1-3/16"	13/16"	1,500 lbs.	.75 tons	.18 lbs.
SPS038	3/8"	7/16"	2-1/2"	1-7/16"	1"	2,000 lbs.	1.00 tons	.31 lbs.
SPS716	7/16"	1/2"	2-15/16"	1-11/16"	1-3/16"	3,000 lbs.	1.50 tons	.45 lbs.
SPS012	1/2"	5/8"	3-1/4"	1-7/8"	1-5/16"	4,000 lbs.	2.00 tons	.75 lbs.
SPS058	5/8"	3/4"	4-3/16"	2-3/8"	1-11/16"	6,500 lbs.	3.25 tons	1.20 lbs.
SPS034	3/4"	7/8"	5"	2-13/16"	2"	9,500 lbs.	4.75 tons	2.14 lbs.
SPS078	7/8"	1"	5-13/16"	3-5/16"	2-1/2"	13,000 lbs.	6.50 tons	3.46 lbs.
SPS001	1"	1-1/8"	6-9/16"	3-3/4"	2-11/16"	17,000 lbs.	8.50 tons	5.00 lbs.

Manufactured to meet or exceed rated capacities as specified within RR-C-271d, Type IVA, Grade A - Class 2. Safety factor is 2x the rated capacity. Minimum breaking strength is 6x rated capacity.

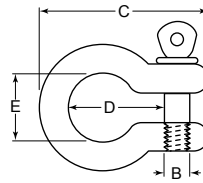
SHACKLES/HOOKS

⚠ See Safe Lifting Chart on page 5. All rated capacities consider a straight vertical lift. Use CAUTION when lifting. Any angle beyond vertical (zero degree) will reduce the rated capacity.

SHACKLES/HOOKS

ANCHOR SHACKLES - HOT DIPPED GALVANIZED

SCREW PIN



Design: Screw Pin
 Process: Forged
 Material: 1045 Carbon Steel
 Finish: Hot Dipped Galvanized

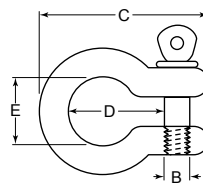
ITEM NUMBER	SIZE	PIN DIAMETER (B)	OVERALL HEIGHT (C)	INSIDE HEIGHT (D)	INSIDE MAX ID (E)	RATED CAPACITY		WEIGHT/PC. (Approx.)
						(lbs.)	(tons)	
SPG316	3/16"	1/4"	1-1/2"	7/8"	11/16"	660 lbs.	.33 tons	.06 lbs.
SPG014	1/4"	5/16"	1-13/16"	1-1/8"	13/16"	1,000 lbs.	.50 tons	.12 lbs.
SPG516	5/16"	3/8"	2-1/16"	1-3/16"	13/16"	1,500 lbs.	.75 tons	.18 lbs.
SPG038	3/8"	7/16"	2-1/2"	1-7/16"	1"	2,000 lbs.	1.00 tons	.31 lbs.
SPG716	7/16"	1/2"	2-15/16"	1-11/16"	1-3/16"	3,000 lbs.	1.50 tons	.45 lbs.
SPG012	1/2"	5/8"	3-1/4"	1-7/8"	1-5/16"	4,000 lbs.	2.00 tons	.75 lbs.
SPG058	5/8"	3/4"	4-3/16"	2-3/8"	1-11/16"	6,500 lbs.	3.25 tons	1.20 lbs.
SPG034	3/4"	7/8"	5"	2-13/16"	2"	9,500 lbs.	4.75 tons	2.14 lbs.
SPG078	7/8"	1"	5-13/16"	3-5/16"	2-1/2"	13,000 lbs.	6.50 tons	3.46 lbs.
SPG001	1"	1-1/8"	6-9/16"	3-3/4"	2-11/16"	17,000 lbs.	8.50 tons	5.00 lbs.
SPG118	1-1/8"	1-1/4"	7-1/2"	4-1/4"	2-7/8"	19,000 lbs.	9.50 tons	7.10 lbs.
SPG114	1-1/4"	1-3/8"	8-1/4"	4-11/16"	3-1/4"	24,000 lbs.	12.00 tons	9.90 lbs.
SPG138	1-3/8"	1-1/2"	10"	5-1/4"	3-5/8"	27,000 lbs.	13.50 tons	13.50 lbs.
SPG112	1-1/2"	1-3/4"	10"	5-3/4"	3-7/8"	34,000 lbs.	17.00 tons	17.00 lbs.
SPG134	1-3/4"	2"	12-3/8"	7"	5"	50,000 lbs.	25.00 tons	30.38 lbs.
SPG002	2"	2-1/4"	13-11/16"	7-3/4"	5-3/4"	70,000 lbs.	35.00 tons	45.00 lbs.
SPG212	2-1/2"	2-3/4"	19-1/16"	10-1/2"	7-3/4"	110,000 lbs.	55.00 tons	85.75 lbs.
SPG003	3"	3-5/16"	21-1/2"	13"	7-7/8"	170,000 lbs.	85.00 tons	154.00 lbs.

Manufactured to meet or exceed rated capacities as specified within RR-C-271d, Type IVA, Grade A - Class 2. Safety factor is 2x the rated capacity. Minimum breaking strength is 6x rated capacity.

SHACKLES/HOOKS

STAINLESS STEEL ANCHOR SHACKLES

SCREW PIN



Design: Screw Pin
 Process: Cast
 Threads: UNC
 Material: 304 Stainless Steel
 Finish: Polished

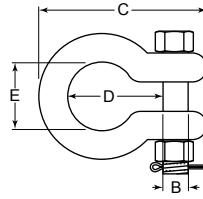
ITEM NUMBER	SIZE	PIN DIAMETER (B)	OVERALL HEIGHT (C)	INSIDE HEIGHT (D)	INSIDE MAX ID (E)	RATED CAPACITY	WEIGHT/PC. (Approx.)
SSP014	1/4"	5/16"	1-7/8"	1-1/8"	3/4"	450 lbs.	.12 lbs.
SSP516	5/16"	3/8"	2-1/8"	1-1/4"	13/16"	650 lbs.	.18 lbs.
SSP038	3/8"	7/16"	2-1/2"	1-7/16"	1"	1,000 lbs.	.31 lbs.
SSP012	1/2"	5/8"	3-1/4"	1-13/16"	1-1/4"	1,990 lbs.	.75 lbs.
SSP058	5/8"	3/4"	4-1/16"	2-3/8"	1-11/16"	3,050 lbs.	1.36 lbs.
SSP034	3/4"	7/8"	4-7/8"	2-13/16"	2"	4,475 lbs.	2.14 lbs.
SSP078	7/8"	1"	5-13/16"	3-3/8"	2-1/2"	6,000 lbs.	3.46 lbs.
SSP001	1"	1-1/4"	6-9/16"	3-11/16"	2-11/16"	7,950 lbs.	5.00 lbs.

Manufactured to provide maximum corrosion resistance.

SHACKLES/HOOKS

ANCHOR SHACKLES

SAFETY BOLT



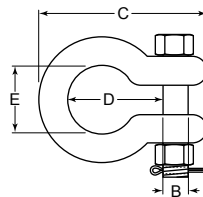
Design: Safety Bolt
 Process: Forged
 Material: 1045 Carbon Steel
 Finish: Hot Dipped Galvanized

ITEM NUMBER	SIZE	PIN DIAMETER (B)	OVERALL HEIGHT (C)	INSIDE HEIGHT (D)	INSIDE MAX ID (E)	RATED CAPACITY		WEIGHT/PC. (Approx.)
						(lbs.)	(tons)	
SBT014	1/4"	5/16"	1-13/16"	1-1/8"	13/16"	1,000 lbs.	.50 tons	.13 lbs.
SBT516	5/16"	3/8"	2-1/16"	1-3/16"	13/16"	1,500 lbs.	.75 tons	.17 lbs.
SBT038	3/8"	7/16"	2-1/2"	1-7/16"	1"	2,000 lbs.	1.00 tons	.25 lbs.
SBT716	7/16"	1/2"	2-15/16"	1-11/16"	1-3/16"	3,000 lbs.	1.50 tons	.40 lbs.
SBT012	1/2"	5/8"	3-1/4"	1-7/8"	1-5/16"	4,000 lbs.	2.00 tons	.70 lbs.
SBT058	5/8"	3/4"	4-3/16"	2-3/8"	1-11/16"	6,500 lbs.	3.25 tons	1.50 lbs.
SBT034	3/4"	7/8"	5"	2-13/16"	2"	9,500 lbs.	4.75 tons	2.30 lbs.
SBT078	7/8"	1"	5-13/16"	3-5/16"	2-1/2"	13,000 lbs.	6.50 tons	3.46 lbs.
SBT001	1"	1-1/8"	6-9/16"	3-3/4"	2-11/16"	17,000 lbs.	8.50 tons	5.00 lbs.
SBT118	1-1/8"	1-1/4"	7-1/2"	4-1/4"	2-7/8"	19,000 lbs.	9.50 tons	7.00 lbs.
SBT114	1-1/4"	1-3/8"	8-1/4"	4-11/16"	3-1/4"	24,000 lbs.	12.00 tons	9.80 lbs.
SBT138	1-3/8"	1-1/2"	10"	5-1/4"	3-5/8"	27,000 lbs.	13.50 tons	13.50 lbs.
SBT112	1-1/2"	1-3/4"	10"	5-3/4"	3-7/8"	34,000 lbs.	17.00 tons	17.25 lbs.
SBT134	1-3/4"	2"	12-3/8"	7"	5"	50,000 lbs.	25.00 tons	29.50 lbs.
SBT002	2"	2-1/4"	13-11/16"	7-3/4"	5-3/4"	70,000 lbs.	35.00 tons	46.00 lbs.
SBT212	2-1/2"	2-3/4"	19-1/16"	10-1/2"	7-3/4"	110,000 lbs.	55.00 tons	85.75 lbs.
SBT003	3"	3-5/16"	21-1/2"	13"	7-7/8"	170,000 lbs.	85.00 tons	154.00 lbs.

Manufactured to meet or exceed rated capacities as specified within RR-C-271d, Type IVA, Grade A - Class 3. Safety factor is 2x the rated capacity. Minimum breaking strength is 6x rated capacity.

STAINLESS STEEL ANCHOR SHACKLES

SAFETY BOLT



Design: Safety Bolt
 Process: Cast
 Material: 304 Stainless Steel
 Finish: Polished

ITEM NUMBER	SIZE	PIN DIAMETER (B)	OVERALL HEIGHT (C)	INSIDE HEIGHT (D)	INSIDE MAX ID (E)	RATED CAPACITY	WEIGHT/PC. (Approx.)
SSBT56	5/16"	3/8"	2-1/16"	1-1/4"	13/16"	650 lbs.	.17 lbs.
SSBT38	3/8"	7/16"	2-1/2"	1-7/16"	1"	1,000 lbs.	.25 lbs.
SSBT12	1/2"	5/8"	3-1/4"	1-13/16"	1-5/16"	1,990 lbs.	.40 lbs.
SSBT58	5/8"	3/4"	4-3/16"	2-3/8"	1-11/16"	3,050 lbs.	1.50 lbs.
SSBT34	3/4"	7/8"	4-7/8"	2-13/16"	2"	4,475 lbs.	2.30 lbs.
SSBT78	7/8"	1"	5-13/16"	3-3/8"	2-1/2"	6,000 lbs.	3.46 lbs.
SSBT01	1"	1-1/4"	6-1/2"	3-11/16"	2-11/16"	7,950 lbs.	5.00 lbs.

Manufactured to provide maximum corrosion resistance.

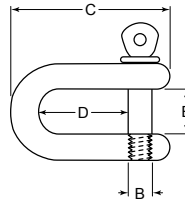
See Safe Lifting Chart on page 5. All rated capacities consider a straight vertical lift. Use CAUTION when lifting. Any angle beyond vertical (zero degree) will reduce the rated capacity.

SHACKLES/HOOKS

SHACKLES/HOOKS

CHAIN SHACKLES

SCREW PIN



Design: Screw Pin
 Process: Forged
 Material: 1045 Carbon Steel
 Finish: Hot Dipped Galvanized

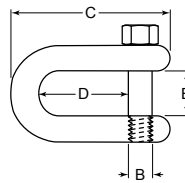
ITEM NUMBER	SIZE	PIN DIAMETER (B)	OVERALL HEIGHT (C)	INSIDE HEIGHT (D)	INSIDE MAX ID (E)	RATED CAPACITY		WEIGHT/PC. (Approx.)
						(lbs.)	(tons)	
CSP014	1/4"	5/16"	1-9/16"	7/8"	7/16"	1,000 lbs.	.50 tons	.11 lbs.
CSP516	5/16"	3/8"	2-15/16"	1"	1/2"	1,500 lbs.	.75 tons	.17 lbs.
CSP038	3/8"	7/16"	2-5/16"	1-1/4"	11/16"	2,000 lbs.	1.00 tons	.24 lbs.
CSP716	7/16"	1/2"	2-11/16"	1-7/16"	3/4"	3,000 lbs.	1.50 tons	.40 lbs.
CSP012	1/2"	5/8"	3"	1-5/8"	13/16"	4,000 lbs.	2.00 tons	.59 lbs.
CSP058	5/8"	3/4"	3-3/4"	2"	1-1/16"	6,500 lbs.	3.25 tons	1.21 lbs.
CSP034	3/4"	7/8"	4-1/2"	2-3/8"	1-1/4"	9,500 lbs.	4.75 tons	2.25 lbs.
CSP078	7/8"	1"	5-1/3"	2-13/16"	1-7/16"	13,000 lbs.	6.50 tons	3.16 lbs.
CSP001	1"	1-1/8"	5-15/16"	3-1/4"	1-11/16"	17,000 lbs.	8.50 tons	4.47 lbs.
CSP118	1-1/8"	1-1/4"	6-7/8"	3-9/16"	1-3/4"	19,000 lbs.	9.50 tons	6.75 lbs.
CSP114	1-1/4"	1-3/8"	7-1/2"	3-15/16"	2"	24,000 lbs.	12.00 tons	9.06 lbs.
CSP112	1-1/2"	1-3/4"	9-1/16"	4-13/16"	2-3/8"	34,000 lbs.	17.00 tons	15.95 lbs.
CSP134	1-3/4"	2"	11"	5-13/16"	2-7/8"	50,000 lbs.	25.00 tons	26.75 lbs.
CSP002	2"	2-1/4"	12-3/4"	6-13/16"	3-1/4"	70,000 lbs.	35.00 tons	42.31 lbs.
CSP212	2-1/2"	2-3/4"	14-15/16"	8-1/16"	4-1/8"	110,000 lbs.	55.00 tons	71.75 lbs.

Manufactured to meet or exceed rated capacities as specified within RR-C-271d, Type IVA - Class 2.
 Safety factor is 2x the rated capacity. Minimum breaking strength is 6x rated capacity.

SHACKLES/HOOKS

STAINLESS STEEL CHAIN SHACKLES

SCREW PIN



Design: Screw Pin
 Process: Cast
 Thread: UNC
 Material: 304 Stainless Steel
 Finish: Polished

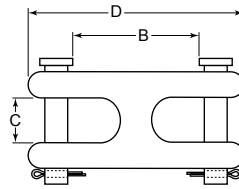
ITEM NUMBER	SIZE	PIN DIAMETER (B)	OVERALL HEIGHT (C)	INSIDE HEIGHT (D)	INSIDE MAX ID (E)	RATED CAPACITY	WEIGHT/PC. (Approx.)
SSPC16	3/16"	1/4"	1-1/4"	3/4"	3/8"	300 lbs.	.04 lbs.
SSPC14	1/4"	5/16"	1-9/16"	1"	1/2"	450 lbs.	.10 lbs.
SSPC56	5/16"	3/8"	1-15/16"	1-1/16"	1/2"	650 lbs.	.18 lbs.
SSPC38	3/8"	7/16"	2-5/16"	1-1/4"	11/16"	1,000 lbs.	.30 lbs.
SSPC12	1/2"	5/8"	3"	1-11/16"	9/16"	1,990 lbs.	.68 lbs.

Manufactured to provide maximum corrosion resistance.

SHACKLES/HOOKS

DOUBLE CLEVIS LINK

TWIN



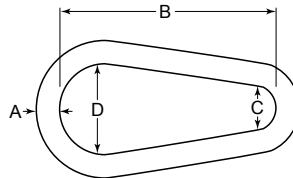
Design: Double Clevis with Pins
 Process: Forged
 Material: 1045 Carbon Steel
 Finish: Zinc

ITEM NUMBER	CHAIN SIZE	INSIDE LENGTH* (B)	INSIDE WIDTH (C)	OAL (D)	RATED CAPACITY	WEIGHT/PC. (Approx.)
LDC014	1/4" - 5/16"	1-1/8"	7/16"	2-1/2"	4,700 lbs.	.31 lbs.
LDC038	3/8"	1-3/8"	1/2"	2-13/16"	6,600 lbs.	.44 lbs.
LDC012	7/16" - 1/2"	1-3/4"	5/8"	3-5/8"	11,250 lbs.	.98 lbs.
LDC058	5/8"	2-1/4"	3/4"	4-1/2"	16,500 lbs.	1.60 lbs.

Minimum breaking strength is 4x the rated capacity.
 * Inside length is measured from pin to pin.

MASTER LINK

PEAR SHAPED



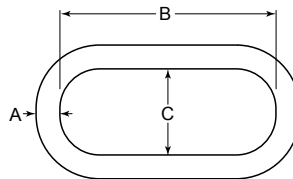
Design: Weldless/Pear Shaped
 Process: Forged
 Material: 1045 Carbon Steel
 Finish: Painted Red

ITEM NUMBER	SIZE (A)	INSIDE LENGTH (B)	INSIDE WIDTH SMALL END (C)	INSIDE WIDTH LARGE END (D)	RATED CAPACITY	WEIGHT/PC. (Approx.)
MLP038	3/8"	2-1/4"	3/4"	1-1/2"	1,600 lbs.	.23 lbs.
MLP012	1/2"	3"	1"	2"	2,900 lbs.	.55 lbs.
MLP058	5/8"	3-3/4"	1-1/4"	2-1/2"	4,200 lbs.	1.10 lbs.
MLP034	3/4"	4-1/2"	1-1/2"	3"	6,000 lbs.	1.95 lbs.
MLP078	7/8"	5-1/4"	1-3/4"	3-1/2"	8,300 lbs.	2.78 lbs.
MLP001	1"	6"	2"	4"	10,800 lbs.	4.30 lbs.
MLP114	1-1/4"	7-1/2"	2-1/2"	5"	16,750 lbs.	8.50 lbs.

Minimum breaking strength is 5x the rated capacity.

ALLOY MASTER LINK

OBLONG



Design: Weldless/Oblong
 Process: Forged
 Material: Alloy Steel
 Finish: Painted Red

ITEM NUMBER	SIZE (A)	INSIDE LENGTH (B)	INSIDE WIDTH (C)	RATED CAPACITY	WEIGHT/PC. (Approx.)
MLO012	1/2"	5"	2-1/2"	4,100 lbs.	.89 lbs.
MLO058	5/8"	6"	3"	5,500 lbs.	1.63 lbs.
MLO034	3/4"	5-1/2"	2-3/4"	8,600 lbs.	2.25 lbs.
MLO001	1"	7"	3-1/2"	20,300 lbs.	5.00 lbs.
MLO114	1-1/4"	8-3/4"	4-3/8"	29,300 lbs.	9.57 lbs.
MLO112	1-1/2"	10-1/2"	5-1/4"	39,900 lbs.	17.20 lbs.

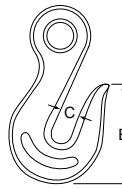
Minimum breaking strength is 6x the rated capacity.

⚠ See Safe Lifting Chart on page 5. All rated capacities consider a straight vertical lift.
 Use CAUTION when lifting. Any angle beyond vertical (zero degree) will reduce the rated capacity.

SHACKLES/HOOKS

EYE GRAB HOOK

GRADE 43



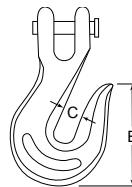
Design: Eye
 Process: Forged
 Material: 1045 Carbon Steel
 Finish: Self-Colored

ITEM NUMBER	CHAIN SIZE	FRONT LENGTH (B)	INSIDE WIDTH (C)	RATED CAPACITY	WEIGHT/PC. (Approx.)
HEG014	1/4"	1-3/4"	5/16"	2,600 lbs.	.28 lbs.
HEG516	5/16"	2-1/16"	7/16"	3,900 lbs.	.45 lbs.
HEG038	3/8"	2-5/16"	1/2"	5,400 lbs.	.79 lbs.
HEG716	7/16"	2-11/16"	9/16"	7,200 lbs.	1.50 lbs.
HEG012	1/2"	3"	11/16"	9,200 lbs.	1.75 lbs.
HEG058	5/8"	3-3/4"	3/4"	12,750 lbs.	3.25 lbs.
HEG034	3/4"	5-1/16"	15/16"	18,500 lbs.	5.94 lbs.

Minimum breaking strength is 4x Rated Capacity.

CLEVIS GRAB HOOK

GRADE 43



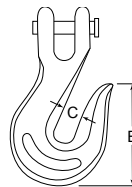
Design: Clevis
 Process: Forged
 Material: 1045 Carbon Steel
 Finish: Self-Colored

ITEM NUMBER	CHAIN SIZE	FRONT LENGTH (B)	INSIDE WIDTH (C)	RATED CAPACITY	WEIGHT/PC. (Approx.)
HCG014	1/4"	1-3/4"	5/16"	2,600 lbs.	.36 lbs.
HCG516	5/16"	2-1/16"	7/16"	3,900 lbs.	.62 lbs.
HCG038	3/8"	2-5/16"	1/2"	5,400 lbs.	1.00 lbs.
HCG716	7/16"	2-11/16"	9/16"	7,200 lbs.	1.31 lbs.
HCG012	1/2"	3"	11/16"	9,200 lbs.	2.22 lbs.
HCG058	5/8"	3-3/4"	3/4"	12,750 lbs.	4.41 lbs.
HCG034	3/4"	5-1/16"	15/16"	18,500 lbs.	6.50 lbs.

Minimum breaking strength is 4x rated capacity.

CLEVIS GRAB HOOK

GRADE 70



Design: Clevis
 Process: Forged
 Material: Alloy Steel Hook
 Finish: Zinc Yellow

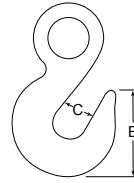
ITEM NUMBER	CHAIN SIZE	FRONT LENGTH (B)	INSIDE WIDTH (C)	RATED CAPACITY	WEIGHT/PC. (Approx.)
HCG516-G7	5/16"	2-1/16"	7/16"	4,700 lbs.	.62 lbs.
HCG038-G7	3/8"	2-5/16"	1/2"	6,600 lbs.	1.00 lbs.

Rated capacity relates to the chain capacity. The capacity/strength of the attachment component must be considered.

SHACKLES/HOOKS

EYE SLIP HOOK

GRADE 43



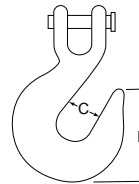
Design: Eye
Process: Forged
Material: 1045 Carbon Steel
Finish: Self-Colored

ITEM NUMBER	CHAIN SIZE	FRONT LENGTH (B)	INSIDE WIDTH (C)	RATED CAPACITY	WEIGHT/PC. (Approx.)
HES014	1/4"	2-1/8"	5/16"	1,950 lbs.	.40 lbs.
HES516	5/16"	2-1/4"	1-1/16"	2,875 lbs.	.64 lbs.
HES038	3/8"	2-9/16"	1-5/16"	4,000 lbs.	1.10 lbs.
HES716	7/16"	3-1/16"	1-9/16"	5,000 lbs.	1.56 lbs.
HES012	1/2"	3-7/16"	1-11/16"	6,500 lbs.	2.09 lbs.
HES058	5/8"	4"	2"	9,250 lbs.	3.90 lbs.
HES034	3/4"	4-3/4"	2-1/8"	12,500 lbs.	6.93 lbs.

Minimum breaking strength is 4x rated capacity. Inside width dimension is approximate due to hook design.

CLEVIS SLIP HOOK

GRADE 43



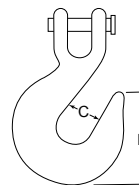
Design: Clevis
Process: Forged
Material: 1045 Carbon Steel
Finish: Self-Colored

ITEM NUMBER	CHAIN SIZE	FRONT LENGTH (B)	INSIDE WIDTH (C)	RATED CAPACITY	WEIGHT/PC. (Approx.)
HCS014	1/4"	2-1/8"	15/16"	1,950 lbs.	.550 lbs.
HCS516	5/16"	2-1/4"	1-1/16"	2,875 lbs.	.79 lbs.
HCS038	3/8"	2-9/16"	1-5/16"	4,000 lbs.	1.21 lbs.
HCS716	7/16"	3-1/16"	1-9/16"	5,000 lbs.	2.06 lbs.
HCS012	1/2"	3-7/16"	1-11/16"	6,500 lbs.	2.75 lbs.
HCS058	5/8"	4"	2"	9,250 lbs.	4.75 lbs.
HCS034	3/4"	5-1/16"	2-1/2"	12,500 lbs.	7.00 lbs.

Minimum breaking strength is 4x rated capacity. Inside width dimension is approximate due to hook design.

CLEVIS SLIP HOOK

GRADE 70



Design: Clevis
Process: Forged
Material: Alloy Steel Hook
Finish: Zinc Yellow

ITEM NUMBER	CHAIN SIZE	FRONT LENGTH (B)	INSIDE WIDTH (C)	RATED CAPACITY	WEIGHT/PC. (Approx.)
HCS516-G7	5/16"	2-1/4"	1-1/16"	4,700 lbs.	.79 lbs.
HCS038-G7	3/8"	2-9/16"	1-5/16"	6,600 lbs.	1.21 lbs.

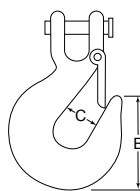
SHACKLES/HOOKS

! See Safe Lifting Chart on page 5. All rated capacities consider a straight vertical lift. Use CAUTION when lifting. Any angle beyond vertical (zero degree) will reduce the rated capacity.

SHACKLES/HOOKS

CLEVIS SLIP HOOK W/ SAFETY LATCH

GRADE 43



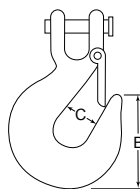
Design: Clevis with Latch
 Process: Forged
 Material-Hook: 1045 Carbon Steel
 Material-Latch: Stainless Steel
 Finish: Zinc

ITEM NUMBER	CHAIN SIZE	FRONT LENGTH (B)	INSIDE WIDTH (C)	RATED CAPACITY	WEIGHT/PC. (Approx.)
HCS014-L	1/4"	2-1/8"	15/16"	1,950 lbs.	.55 lbs.
HCS516-L	5/16"	2-1/4"	1-1/16"	2,875 lbs.	.79 lbs.
HCS038-L	3/8"	2-9/16"	1-5/16"	4,000 lbs.	1.21 lbs.
HCS012-L	1/2"	3-7/16"	1-11/16"	6,500 lbs.	2.75 lbs.

Minimum breaking strength is 4x rated capacity.
 Inside width dimension is approximate due to hook design.

CLEVIS SLIP HOOK W/ SAFETY LATCH

GRADE 70



Design: Clevis with Latch
 Process: Forged
 Material-Hook: Alloy Steel
 Material-Latch: Stainless Steel
 Finish: Zinc Yellow

ITEM NUMBER	CHAIN SIZE	FRONT LENGTH (B)	INSIDE WIDTH (C)	RATED CAPACITY	WEIGHT/PC. (Approx.)
HCS516-G7L	5/16"	2-1/4"	1-1/16"	4,700 lbs.	.79 lbs.
HCS038-G7L	3/8"	2-9/16"	1-5/16"	6,600 lbs.	1.21 lbs.

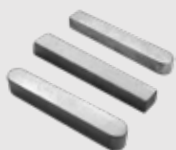
Minimum breaking strength is 4x rated capacity.
 Inside width dimension is approximate due to hook design.

SHACKLES/HOOKS

ALSO AVAILABLE AT HUYETT.COM



Grease Fittings & Accessories



Machine Keys & Key Stock



Pins & Wire Forms



Engineered Fasteners



Rivet Nuts & Installation Tools



Wave & Spring Washers



Hose Clamps

Don't see what you're looking for?
 Give our Sales Team a call today.

785-392-3017

ROPE/CHAIN HARDWARE

CHAIN - PROOF COIL

GRADE 30



Design: Proof Coil/NACM96
 Process: Welded link
 Material: Carbon Steel
 Finish: Zinc

ITEM NUMBER	CHAIN SIZE	FOOT/PAIL	LINK DIMENSIONS ID		RATED CAPACITY	WEIGHT/100 FT. (Approx.)
			LENGTH	WIDTH		
CPC316-P	3/16"	250'	.98"	.30"	750 lbs.	95.00 lbs.
CPC014-P	1/4"	141'	1.24"	.38"	1,250 lbs.	90.50 lbs.
CPC516-P	5/16"	92'	1.29"	.44"	1,900 lbs.	82.00 lbs.
CPC038-P	3/8"	63'	1.38"	.55"	2,650 lbs.	87.00 lbs.

CHAIN BINDERS

GRADE 70



Design: Grade 70
 Process: Welded link
 Material: Carbon Steel
 Finish: Zinc Yellow

ITEM NUMBER	SIZE	LENGTH	RATED CAPACITY	WEIGHT/PC. (Approx.)
CG7516-B15	5/16"	15'	4,700 lbs.	16.30 lbs.
CG7516-B20	5/16"	20'	4,700 lbs.	21.00 lbs.
CG7038-B20	3/8"	20'	6,600 lbs.	32.20 lbs.

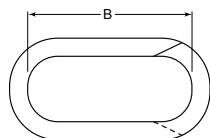
Grade 70 chain meets DOT requirements with zinc yellow finish. Each assembly has a clevis grab hook on both ends. Chains can be easily adjusted, or cut to size, using the same hooks for special applications.

CHAIN REPAIR LINK

GRADE 30



Material: Steel
 Finish: Zinc



ITEM NUMBER	CHAIN SIZE	LENGTH (B)	WEIGHT/PC. (Approx.)
CRL018	1/8"	3/4"	.02 lbs.
CRL316	3/16"	1"	.03 lbs.
CRL014	1/4"	1-1/4"	.05 lbs.
CRL516	5/16"	1-1/2"	.10 lbs.
CRL038	3/8"	1-5/8"	.20 lbs.
CRL012	1/2"	2-1/2"	.41 lbs.

COLD SHUT

GRADE 30



Material: Steel
 Finish: Zinc

ITEM NUMBER	CHAIN SIZE	RATED CAPACITY	WEIGHT/PC. (Approx.)
CCS316	3/16"	450 lbs.	.02 lbs.
CCS014	1/4"	800 lbs.	.04 lbs.
CCS516	5/16"	1,300 lbs.	.08 lbs.
CCS038	3/8"	1,900 lbs.	.15 lbs.
CCS716	7/16"	2,500 lbs.	.20 lbs.
CCS012	1/2"	3,700 lbs.	.27 lbs.
CCS058	5/8"	6,900 lbs.	.75 lbs.

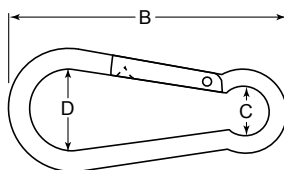
⚠ See Safe Lifting Chart on page 5. All rated capacities consider a straight vertical lift. Use CAUTION when lifting. Any angle beyond vertical (zero degree) will reduce the rated capacity.

⚠ Chain repair and cold shut links are not recommended for lifting applications.

ROPE/CHAIN HARDWARE

HOOKS

SNAP



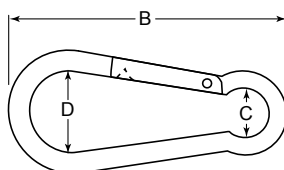
Design: Standard Duty
 Process: Bent/Assembled
 Material: Carbon Steel
 Finish: Zinc



ITEM NUMBER	SIZE/ DIAMETER (A)	OAL (B)	EYE ID (C)	HOOK ID (D)	RATED CAPACITY	WEIGHT/PC. (Approx.)
HSH532	1/8"	1-9/16"	1/4"	1/2"	80 lbs.	.02 lbs.
HSH316	3/16"	2"	5/16"	9/16"	120 lbs.	.03 lbs.
HSH014	1/4"	2-3/8"	3/8"	3/4"	260 lbs.	.06 lbs.
HSH932	1/4"	2-3/4"	3/8"	13/16"	400 lbs.	.09 lbs.
HSH516	5/16"	3-1/8"	7/16"	1-5/16"	500 lbs.	.14 lbs.
HSH038	3/8"	3-15/16"	5/8"	1-3/16"	770 lbs.	.27 lbs.
HSH012	1/2"	6-5/16"	7/8"	2-1/8"	1,200 lbs.	.76 lbs.

STAINLESS STEEL HOOKS

SNAP



Design: Standard Duty
 Process: Bent/Assembled
 Material: Stainless Steel
 Finish: Polished



ITEM NUMBER	SIZE/ DIAMETER (A)	OAL (B)	EYE ID (C)	HOOK ID (D)	RATED CAPACITY	WEIGHT/PC. (Approx.)
HSH316-SS	3/16"	2"	5/16"	9/16"	105 lbs.	.03 lbs.
HSH014-SS	1/4"	2-3/8"	3/8"	3/4"	260 lbs.	.06 lbs.
HSH516-SS	5/16"	3-1/8"	7/16"	1-5/16"	500 lbs.	.14 lbs.
HSH038-SS	3/8"	3-15/16"	5/8"	1-3/16"	770 lbs.	.27 lbs.
HSH012-SS	1/2"	6-5/16"	7/8"	2-1/8"	1,200 lbs.	.76 lbs.

ROPE/CHAIN HARDWARE

Your **Account Order History** at huyett.com includes:



Order Status



Your Favorites



Order Tracking Info



Quantity Breaks



Expected Ship Date



Customer Specific Pricing



Visit our Knowledge Vault for catalogs, product training, and best practices.

* Some Exclusions Apply



Rated Capacity relates to the hook safe capacity. The capacity/strength of any attachment component must be considered. See Safe Lifting Chart on page 5. All rated capacities consider a straight vertical lift. Use CAUTION when lifting. Any angle beyond vertical (zero degree) will reduce the rated capacity.



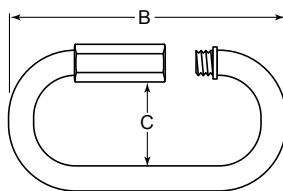
Snap hooks are not recommended for fall arrest, climbing, or overhead lifting applications.



ROPE/CHAIN HARDWARE

LINKS

QUICK



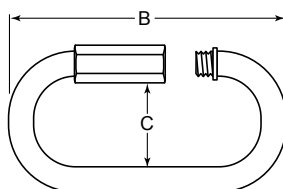
Design: Standard Duty
 Process: Bent/Machined/Assembled
 Threads: UNC
 Material: Carbon Steel
 Finish: Zinc



ITEM NUMBER	SIZE/ DIAMETER (A)	OAL (B)	WIDTH ID (C)	RATED CAPACITY	WEIGHT/PC. (Approx.)
CQL018	1/8"	1-7/16"	3/8"	500 lbs.	.02 lbs.
CQL316	3/16"	1-15/16"	1/2"	660 lbs.	.04 lbs.
CQL014	1/4"	2-1/4"	9/16"	880 lbs.	.12 lbs.
CQL516	5/16"	2-7/8"	11/16"	1,760 lbs.	.15 lbs.
CQL038	3/8"	3-9/16"	13/16"	2,640 lbs.	.28 lbs.
CQL012	1/2"	4-3/16"	15/16"	3,300 lbs.	.46 lbs.

STAINLESS STEEL LINKS

QUICK

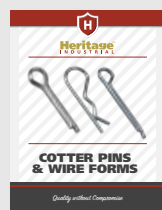


Design: Standard Duty
 Process: Bent/Machined/Assembled
 Threads: UNC
 Material: Stainless Steel
 Finish: Polished



ITEM NUMBER	SIZE/ DIAMETER (A)	OAL (B)	WIDTH ID (C)	RATED CAPACITY	WEIGHT/PC. (Approx.)
CQL014-SS	1/4"	2-1/4"	9/16"	880 lbs.	.12 lbs.
CQL516-SS	5/16"	2-7/8"	11/16"	1,760 lbs.	.15 lbs.
CQL038-SS	3/8"	3-9/16"	13/16"	2,640 lbs.	.28 lbs.
CQL012-SS	1/2"	4-3/16"	15/16"	3,300 lbs.	.46 lbs.

Catalogs Available:



Visit huyett.com/Catalogs to request or download your copy today, or try our Digital Catalogs!

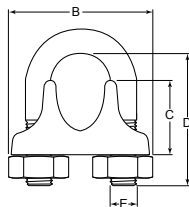
Rated capacity relates to the hook safe capacity. The capacity/strength of any attachment component must be considered. See Safe Lifting Chart on page 5. All rated capacities consider a straight vertical lift. Use CAUTION when lifting. Any angle beyond vertical (zero degree) will reduce the rated capacity.

Quick links are not recommended for fall arrest, climbing, or overhead lifting applications.

ROPE/CHAIN HARDWARE

WIRE ROPE CLIP

FORGED



Design: See Specification
 Process: Forged
 Threads: UNC
 Material: 1045 Carbon Steel
 Finish-Saddle: Hot Dipped Galvanized
 Finish-U-bolt/Nuts: Electro Galvanized



ITEM NUMBER	ROPE SIZE	ACROSS SADDLE (B)	SADDLE HEIGHT (C)	U-BOLT HEIGHT INSIDE (D)	BOLT DIAMETER (E)	WEIGHT/PC. (Approx.)
WRCF18	1/8"	1"	3/8"	11/16"	3/16"	.06 lbs.
WRCF36	3/16"	1-3/16"	1/2"	15/16"	1/4"	.09 lbs.
WRCF14	1/4"	1-7/16"	15/16"	1"	5/16"	.18 lbs.
WRCF56	5/16"	1-11/16"	3/4"	1-3/8"	3/8"	.30 lbs.
WRCF38	3/8"	1-15/16"	7/8"	1-1/2"	7/16"	.45 lbs.
WRCF76	7/16"	2-1/4"	1-1/8"	1-7/8"	1/2"	.78 lbs.
WRCF12	1/2"	2-1/4"	1-1/8"	1-7/8"	1/2"	.80 lbs.
WRCF96	9/16"	2-1/2"	1-5/16"	2-1/4"	9/16"	1.10 lbs.
WRCF58	5/8"	2-1/2"	1-5/16"	2-1/4"	9/16"	1.10 lbs.
WRCF34	3/4"	2-13/16"	1-3/8"	2-3/4"	5/8"	1.40 lbs.
WRCF78	7/8"	3-1/8"	1-9/16"	3-1/8"	3/4"	2.10 lbs.
WRCF01	1"	3-7/16"	1-3/4"	3-1/2"	3/4"	2.50 lbs.
WRCF11	1-1/8"	3-9/16"	1-7/8"	3-7/8"	3/4"	2.80 lbs.
WRCF16	1-1/4"	4-1/8"	2-3/16"	4-7/16"	7/8"	4.40 lbs.
WRCF15	1-1/2"	4-7/16"	2-7/16"	4-15/16"	7/8"	5.50 lbs.
WRCF17	1-3/4"	5-1/4"	2-15/16"	5-3/4"	1-1/8"	9.30 lbs.
WRCF02	2"	5-7/8"	3-1/4"	6-7/16"	1-1/4"	13.00 lbs.
WRCF22	2-1/4"	6-3/8"	3-3/16"	7-1/8"	1-1/4"	16.00 lbs.

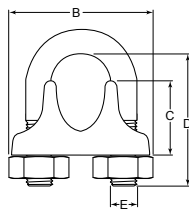
Meets specification FF-C-450 Type 1 - Class 1.

WIRE ROPE CLIP

MALLEABLE



Design: See Specification
 Process: Cast/Bent U-Bolt
 Threads: UNC
 Material-Saddle: Cast Iron
 Material-U-bolt: Carbon Steel
 Finish: Zinc



ITEM NUMBER	ROPE SIZE	WEIGHT/PC. (Approx.)
WRCM16	1/16"	.02 lbs.
WRCM18	1/8"	.03 lbs.
WRCM36	3/16"	.06 lbs.
WRCM14	1/4"	.11 lbs.
WRCM56	5/16"	.12 lbs.
WRCM38	3/8"	.21 lbs.
WRCM76	7/16"	.23 lbs.
WRCM12	1/2"	.35 lbs.
WRCM96	9/16"	.52 lbs.
WRCM58	5/8"	.52 lbs.
WRCM34	3/4"	.75 lbs.
WRCM78	7/8"	1.05 lbs.
WRCM01	1"	1.34 lbs.

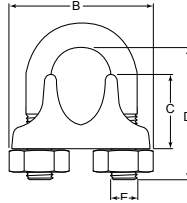
Meets specification FF-C-450 Type 1 - Class 2.
 For approximate dimensions see Wire Rope Clip - Forged.

ROPE/CHAIN HARDWARE

ROPE/CHAIN HARDWARE

STAINLESS STEEL WIRE ROPE CLIP

CAST



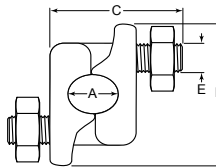
Design: Standard Duty
 Process: Cast
 Material: 304 Stainless Steel
 Finish: Polished



ITEM NUMBER	ROPE SIZE	ACROSS SADDLE (B)	SADDLE HEIGHT (C)	U-BOLT HEIGHT INSIDE (D)	BOLT DIAMETER (E)	WEIGHT/PC. (Approx.)
SWR018	1/8"	15/16"	3/8"	11/16"	3/16"	.05 lbs.
SWR316	3/16"	15/16"	1/2"	15/16"	1/4"	.09 lbs.
SWR014	1/4"	1-7/16"	5/8"	1"	1/4"	.18 lbs.
SWR516	5/16"	1-11/16"	3/4"	1-3/8"	3/8"	.29 lbs.
SWR038	3/8"	1-15/16"	7/8"	1-1/2"	7/16"	.45 lbs.
SWR012	1/2"	2-1/4"	1-1/8"	1-7/8"	1/2"	.80 lbs.
SWR058	5/8"	2-1/2"	1-5/16"	2-3/8"	9/16"	1.10 lbs.
SWR034	3/4"	2-13/16"	1-7/16"	2-3/4"	5/8"	1.38 lbs.
SWR001	1"	3-7/16"	1-13/16"	3-1/2"	3/4"	3.44 lbs.

FIST GRIP CLIP

FORGED



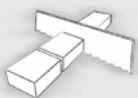
Design: Forged
 Threads: UNC
 Material: 1045 Carbon Steel
 Finish: Hot Dipped Galvanized



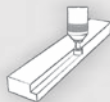
ITEM NUMBER	ROPE SIZE (A)	SADDLE DEPTH (NS)	SADDLE TO END OF BOLT (C)	ACROSS SADDLE (D)	BOLT DIAMETER (E)	WEIGHT/PC. (Approx.)
FGC316	3/16" - 1/4"	15/16"	1-3/8"	1-7/16"	3/8"	.20 lbs.
FGC516	5/16"	1-1/16"	1-1/2"	1-9/16"	3/8"	.28 lbs.
FGC038	3/8"	1-1/16"	1-13/16"	1-3/4"	7/16"	.40 lbs.
FGC012	7/16" - 1/2"	1-1/4"	2-3/16"	2-1/8"	1/2"	.66 lbs.
FGC058	9/16" - 5/8"	1-1/2"	2-11/16"	2-9/16"	5/8"	1.00 lbs.
FGC034	3/4"	1-13/16"	2-15/16"	2-11/16"	3/4"	1.75 lbs.
FGC078	7/8"	2-1/8"	3-5/16"	2-7/8"	3/4"	2.25 lbs.
FGC001	1"	2-1/4"	3-11/16"	3-1/16"	3/4"	3.00 lbs.
FGC118	1-1/8"	2-3/8"	4-3/16"	3-7/16"	7/8"	4.00 lbs.
FGC114	1-1/4"	2-1/2"	4-1/4"	3-9/16"	7/8"	4.00 lbs.
FGC112	1-3/8" - 1-1/2"	3"	5-9/16"	4-1/8"	1"	7.00 lbs.

Meets specification FF-C-450 Type III - Class 1.
 Sizes with dual coverage (i.e. FGC012: 7/16" - 1/2") may be marked with only one dimension (i.e. 1/2").

MANUFACTURING CAPABILITIES



Sawing



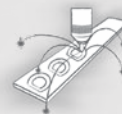
Milling



Drilling



Turning



Laser Cutting



Surface Grinding



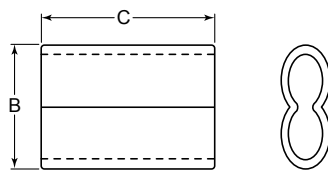
Tumbling

Not designed for lifting. No rated capacity.
 Ensure proper number of clips used per industry specifications.

ROPE/CHAIN HARDWARE

ALUMINUM SLEEVES

6063 - CRIMP



Design: Crimp/Swage - Hour Glass
 Material: Aluminum
 Finish: Self-Colored

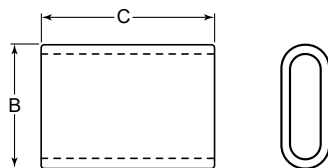
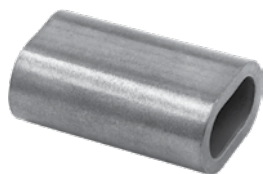


ITEM NUMBER	ROPE SIZE	ACROSS SLEEVE (B)	LENGTH (C)	WEIGHT/100 (Approx.)
ASC116	1/16"	1/4"	3/8"	.10 lbs.
ASC018	1/8"	1/2"	5/8"	.60 lbs.
ASC532	1/8"	9/16"	11/16"	.81 lbs.
ASC316	3/16"	5/8"	1"	1.58 lbs.
ASC014	1/4"	13/16"	1-1/8"	2.60 lbs.
ASC516	5/16"	1-1/16"	1-1/4"	4.62 lbs.
ASC038	3/8"	1-1/8"	1-7/16"	6.21 lbs.
ASC012	1/2"	1-5/8"	2"	17.67 lbs.

Meets specification FF-C-450, Type III, Class - 1.

STAINLESS STEEL SLEEVES

OVAL



Design: Oval
 Material: 304 Stainless Steel
 Finish: Polished



ITEM NUMBER	ROPE SIZE	ACROSS SLEEVE (B)	LENGTH (C)	WEIGHT/100 (Approx.)
SSO116	1/16"	1/8"	1/4"	.22 lbs.
SSO018	1/8"	1/4"	7/16"	.44 lbs.
SSO316	3/16"	3/8"	11/16"	2.21 lbs.
SSO014	1/4"	7/16"	13/16"	3.75 lbs.
SSO516	5/16"	5/8"	1-1/8"	7.94 lbs.

ROPE/CHAIN HARDWARE

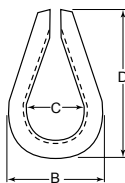
PROUD DISTRIBUTORS OF



ROPE/CHAIN HARDWARE

WIRE ROPE THIMBLE

STAMPED / FORMED



Design: See Specification
 Process: Stamped / Formed
 Material: Carbon Steel
 Finish: Hot Dipped Galvanized

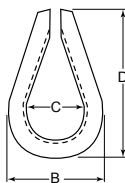


ITEM NUMBER	ROPE SIZE	OD WIDTH (B)	ID WIDTH (C)	OAL (D)	WEIGHT/PC. (Approx.)
HDT018	1/8"	1-1/16"	11/16"	1-15/16"	.02 lbs.
HDT316	3/16"	1-1/16"	11/16"	1-15/16"	.02 lbs.
HDT014	1/4"	1-1/2"	7/8"	2-3/16"	.06 lbs.
HDT516	5/16"	1-13/16"	1-1/16"	2-1/2"	.12 lbs.
HDT038	3/8"	2-1/8"	1-1/8"	2-7/8"	.22 lbs.
HDT716	7/16"	2-3/8"	1-1/4"	3-1/4"	.31 lbs.
HDT012	1/2"	2-3/4"	1-1/2"	3-5/8"	.45 lbs.
HDT916	9/16"	2-3/4"	1-1/2"	3-5/8"	.65 lbs.
HDT058	5/8"	3-1/8"	1-3/4"	4-1/4"	.76 lbs.
HDT034	3/4"	3-13/16"	2"	5"	1.52 lbs.
HDT078	7/8"	4-1/4"	2-1/4"	5-1/2"	1.76 lbs.
HDT001	1"	4-3/4"	2-1/2"	6-1/8"	2.90 lbs.
HDT118	1-1/8" - 1-1/4"	5-7/8"	2-7/8"	7"	4.00 lbs.
HDT114	1-1/4" - 1-3/8"	6-13/16"	3-1/2"	9-1/16"	8.50 lbs.
HDT138	1-3/8" - 1-1/2"	7-1/8"	3-1/2"	9"	12.40 lbs.
HDT158	1-5/8"	8-1/8"	4"	11-1/4"	17.00 lbs.
HDT134	1-3/4"	8-1/2"	4-1/2"	12-3/16"	17.75 lbs.
HDT200	1-7/8" - 2"	10-3/8"	6"	15-1/8"	26.50 lbs.
HDT214	2-1/4"	11-7/8"	7"	17-1/2"	39.50 lbs.

Meets specification FF-T-276, Type III. Sizes 1/8 and 3/16 are Standard Type meeting specification FF-T-276, Type II.

STAINLESS STEEL WIRE ROPE THIMBLE

STAMPED / FORMED



Design: See Specification
 Process: Stamped / Formed
 Material: 304 Stainless Steel
 Finish: Polished



ITEM NUMBER	ROPE SIZE	OD WIDTH (B)	ID WIDTH (C)	OAL (D)	WEIGHT/PC. (Approx.)
SHDT18	1/8"	1-1/16"	11/16"	1-15/16"	.02 lbs.
SHDT16	3/16"	1-1/16"	11/16"	1-15/16"	.02 lbs.
SHDT14	1/4"	1-1/2"	7/8"	2-3/16"	.06 lbs.
SHDT56	5/16"	1-13/16"	1-1/16"	2-1/2"	.12 lbs.
SHDT38	3/8"	2-1/8"	1-1/8"	2-7/8"	.22 lbs.
SHDT12	1/2"	2-3/4"	1-1/2"	3-5/8"	.45 lbs.
SHDT58	5/8"	3-1/8"	1-3/4"	4-1/4"	.76 lbs.
SHDT34	3/4"	3-13/16"	2"	5"	1.52 lbs.

Meets specification FF-T-276, Type III. Sizes 1/8" and 3/16" are Standard Type meeting specification FF-T-276, Type II. Stainless Steel dimension may be smaller than galvanized product.

ROPE/CHAIN HARDWARE

Not designed for lifting. No rated capacity.
 Ensure proper number of clips used per industry specifications.

Inch

mm



Proudly Serving Distributors Since 1899

785-392-3017 | sales@huyett.com

www.huyett.com

© 2022 Huyett, Revision 05/22