

BEARINGS

HUYETT.COM • 785-392-3017

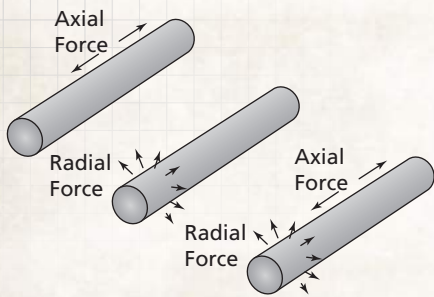
BOX 232 • MINNEAPOLIS, KS • 67467
SALES@HUYETT.COM • FAX 785-392-2845

BEARINGS FEATURES

Bearings are machine elements that support adjoining moving parts and allow them to move in a desired motion. This motion may be linear, rotational, or a combination of the two. Bearings facilitate the desired motion as much as possible by minimizing friction. They are categorized broadly according to the type of operation performed, the motions allowed, or the direction of the loads (force) applied to the parts.

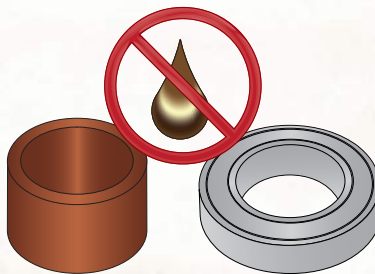
DESIGN CONSIDERATIONS

LOAD TYPE

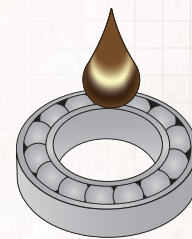


WILL THE LOAD BE AXIAL, RADIAL, OR BOTH?

LUBRICATION

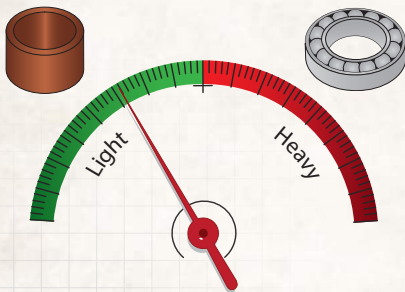


SINTERED BRONZE BEARINGS AND SEALED ROLLER BEARINGS DO NOT REQUIRE REGULAR GREASE OR OIL MAINTENANCE



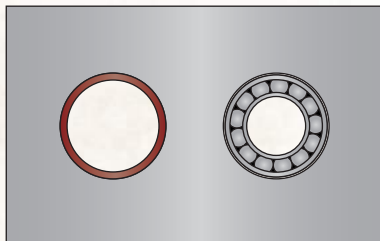
UNSEALED ROLLING BEARINGS MUST BE GREASED OR OILED ON A RECURRING BASIS

LOAD



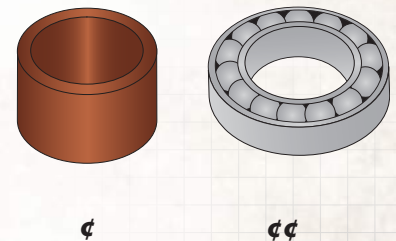
SINTERED BRONZE BEARINGS ARE IDEAL FOR LIGHT DUTY APPLICATIONS, ROLLER BEARINGS ARE BETTER SUITED FOR HEAVY DUTY APPLICATIONS

SPACE



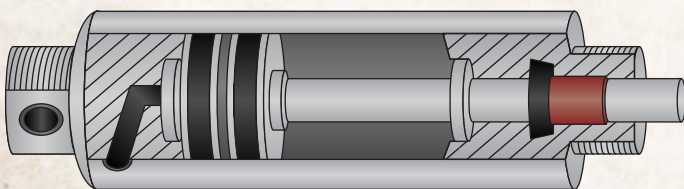
SINTERED BRONZE BEARINGS TAKE UP LESS SPACE THAN ROLLER BEARINGS WHEN INSTALLED

COST



SINTERED BRONZE BEARINGS ARE LESS EXPENSIVE THAN ROLLER BEARINGS

APPLICATION



SINTERED BRONZE BEARINGS ARE USED IN HYDRAULICS

HOW TO READ A PART NUMBER
Bearings come in standard inside diameter x outside diameter x length combinations. Find the part number in charts beginning on page 166.

FB-1220-08

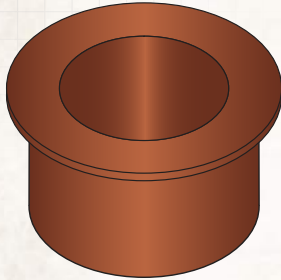
ITEM PREFIX
SIZE CODE

- BEARING PREFIXES:**
- FB • FLANGE BEARING
 - SB • SLEEVE BEARING
 - TB • THRUST BEARING

BEARINGS TYPES

FLANGE

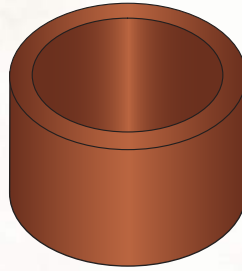
Flange bearings “support” a load. They allow the shaft to slide freely within the bearing. They are used in lower speed applications with lighter loads.



PAGE 166

SLEEVE

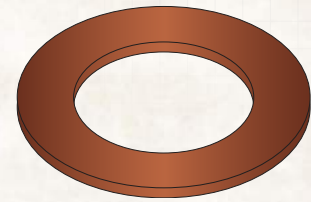
Sleeve bearings typically handle radial loads. The sleeve allows the shaft to spin freely in the bearing.



PAGE 170

THRUST

Thrust bearings are long-wearing, washer-shaped bearings that allow axial loads and protect rotating mechanisms along a shaft.



PAGE 172

QUICK REFERENCE GUIDE

| | COMMON NAMES | APPLICABLE STANDARDS | FABRICATION | HOW TO IDENTIFY | COMMON USES | COMMENTS |
|--------|---|---|---|---|---|--|
| FLANGE | Bushing; Flange; Oilube®; Oilite® | SAE 841, vacuum impregnated with SAE 30 for sintered bronze. SAE 660 for cast bronze. | Formed, sintered, sized, and vacuum impregnated with oil. Cast bronze are formed in a mold. | Inside diameter x length x flange size x thickness of flange. | Used in agriculture, aircraft, automotive, appliances, machine tools, and hydraulics. | Can seize up if allowed to dry out. Re-oiling will prevent this. |
| SLEEVE | Plain Bearing; Journal Bearing; Mechanical Bushing; Oilube; Oilite | SAE 841, vacuum impregnated with SAE 30 for sintered bronze. SAE 660 for cast bronze. | Formed, sintered, sized, and vacuum impregnated with oil. Cast bronze are formed in a mold. | Inside diameter x outside diameter x length. | Used in agriculture, aircraft, automotive, appliances, machine tools, and hydraulics. | Can seize up if allowed to dry out. Re-oiling will prevent this. |
| THRUST | Thrust Washer; Bearing Thrust Washer; Oilube; Oilite | SAE 841, vacuum impregnated with SAE 30 for sintered bronze. SAE 660 for cast bronze. | Formed, sintered, sized, and vacuum impregnated with oil. Cast bronze are formed in a mold. | Inside diameter x outside diameter x thickness. | Used in appliances, machines, automobiles, power tools, and recreational vehicles. | Can seize up if allowed to dry out. Re-oiling will prevent this. |