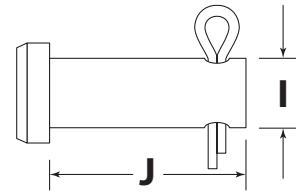
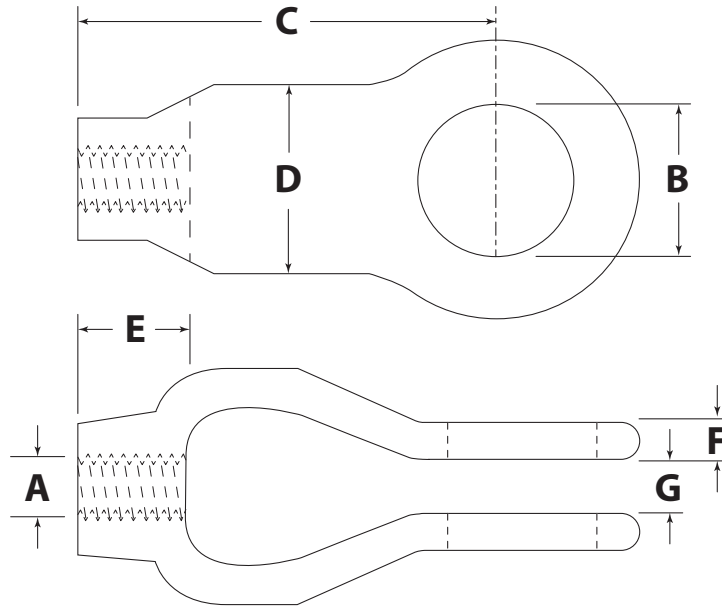


CLEVIS END

PART# _____



Unless otherwise noted,
Clevis End includes a
Clevis Pin and Cotter Pin.

Dimension	Description	Value	Tolerance
A	Thread Diameter		Reference
B	Hole Diameter		Reference
C	Length		Reference
D	Width		Reference
E	Thread Depth		Reference
F	Thickness		Reference
G	Grip		Reference
I	Pin Diameter		Reference
J	Pin Length		Reference

Clevis Size (circle): 2 2-1/2 3
 Thread Size/Pitch: _____
 Thread Type: RH / LH
 Material: _____ 1030-1045 Carbon Steel
 Finish: _____
 Other Requirements: _____

For safety information, rated capacities, weight, and safe lifting practices, visit www.huyett.com/LiftingHardware.

DESIGN APPROVAL

1. All prints must be signed and approved **before** production begins.
2. Specials cannot be returned. See terms and conditions at www.huyett.com/terms.
3. Send completed prints to quotes@huyett.com.

NAME: _____

TITLE: _____

DATE: _____

SIGNATURE: _____



1215 E. 8th St.
 Minneapolis, KS 67467
 PH: 785.392.3017 Fax: 785.382.2845
www.huyett.com

Rev.	Date	Comment	Drawn By:

Note: Unless otherwise requested, the drilled or tapped holes on Hot Dipped Galvanized (HDG) parts may be plain or plated at manufacturer's option. If plated the threads will be oversized prior to coating.