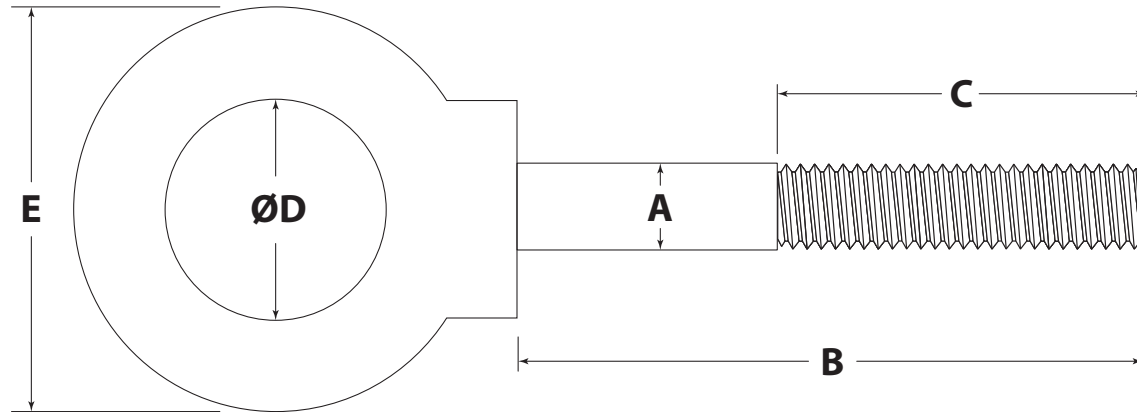


NUT EYE BOLT – SHOULDER PATTERN

PART# _____



| Dimension | Description | Value | Tolerance |
|-----------|------------------|-------|-----------|
| A | Shank Diameter | | Reference |
| B | Shank Length | | +/- .125 |
| C | Thread Length | | Minimum |
| D | Inside Diameter | | +/- .030 |
| E | Outside Diameter | | Reference |
| | | | |
| | | | |
| | | | |
| | | | |
| | | | |
| | | | |
| | | | |
| | | | |
| | | | |

Thread Size/Pitch: _____

Material: _____ 1030-1045 Carbon Steel
 _____ 304 Stainless Steel

Finish: _____

Other Requirements: _____

For safety information, rated capacities, weight, and safe lifting practices, visit www.huyett.com/LiftingHardware.

DESIGN APPROVAL

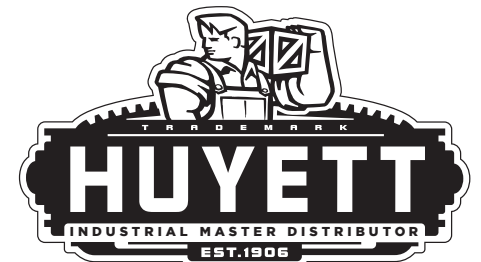
1. All prints must be signed and approved **before** production begins.
2. Specials cannot be returned. See terms and conditions at www.huyett.com/terms.
3. Send completed prints to quotes@huyett.com.

NAME: _____

TITLE: _____

DATE: _____

SIGNATURE: _____



1215 E. 8th St.
 Minneapolis, KS 67467
 PH: 785.392.3017 Fax: 785.382.2845
www.huyett.com

| Rev. | Date | Comment | Drawn By: |
|------|------|---------|-----------|
| | | | |
| | | | |
| | | | |
| | | | |

Note: Hot Dipped Galvanized (HDG) parts threads will be undersized prior to coating.