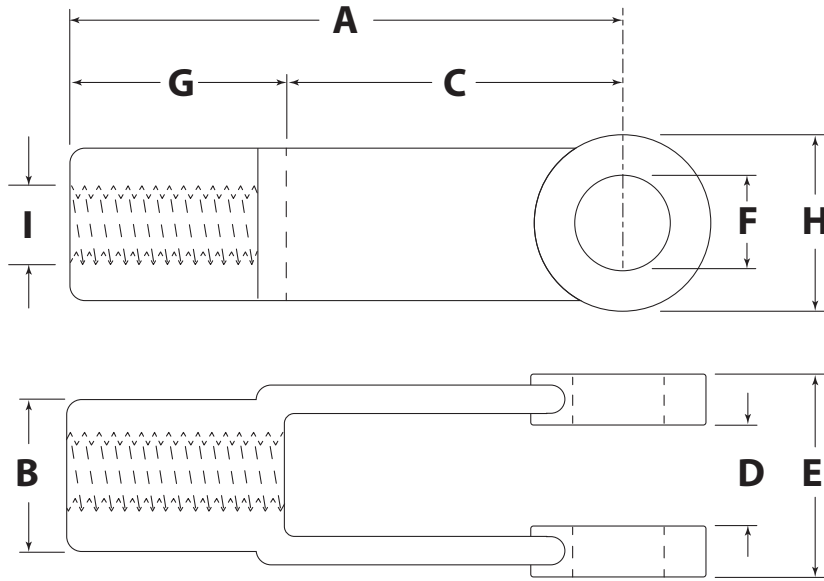


# YOKE END

PART# \_\_\_\_\_



Dimension	Description	Value	Tolerance
A	Body Length		Reference
B	Body Width		Reference
C	Effective Length		+/- .010
D	Inside Opening		+/- .010
E	Outside Opening		+/- .010
F	Hole Diameter		1/4" - 7/16": +/- .001 1/2" - 1": +.001 / -.002
G	Thread Body Length		Reference
H	Outside Diameter		+/- .010
I	Thread Diameter		Reference

Thread Size/Pitch: \_\_\_\_\_

Thread Type: RH / LH

Material: \_\_\_\_\_ 1020 Carbon Steel

Finish: \_\_\_\_\_

Other Requirements: \_\_\_\_\_

\_\_\_\_\_  
 \_\_\_\_\_  
 \_\_\_\_\_  
 \_\_\_\_\_

For safety information, rated capacities, weight, and safe lifting practices, visit [www.huyett.com/LiftingHardware](http://www.huyett.com/LiftingHardware).

# DESIGN APPROVAL

1. All prints must be signed and approved **before** production begins.
2. Specials cannot be returned. See terms and conditions at [www.huyett.com/terms](http://www.huyett.com/terms).
3. Send completed prints to [quotes@huyett.com](mailto:quotes@huyett.com).

NAME: \_\_\_\_\_

TITLE: \_\_\_\_\_

DATE: \_\_\_\_\_

SIGNATURE: \_\_\_\_\_



1215 E. 8th St.  
 Minneapolis, KS 67467  
 PH: 785.392.3017 Fax: 785.382.2845  
[www.huyett.com](http://www.huyett.com)

Rev.	Date	Comment	Drawn By:

**Note:** Unless otherwise requested, the drilled or tapped holes on Hot Dipped Galvanized (HDG) parts may be plain or plated at manufacturer's option. If plated the threads will be oversized prior to coating.