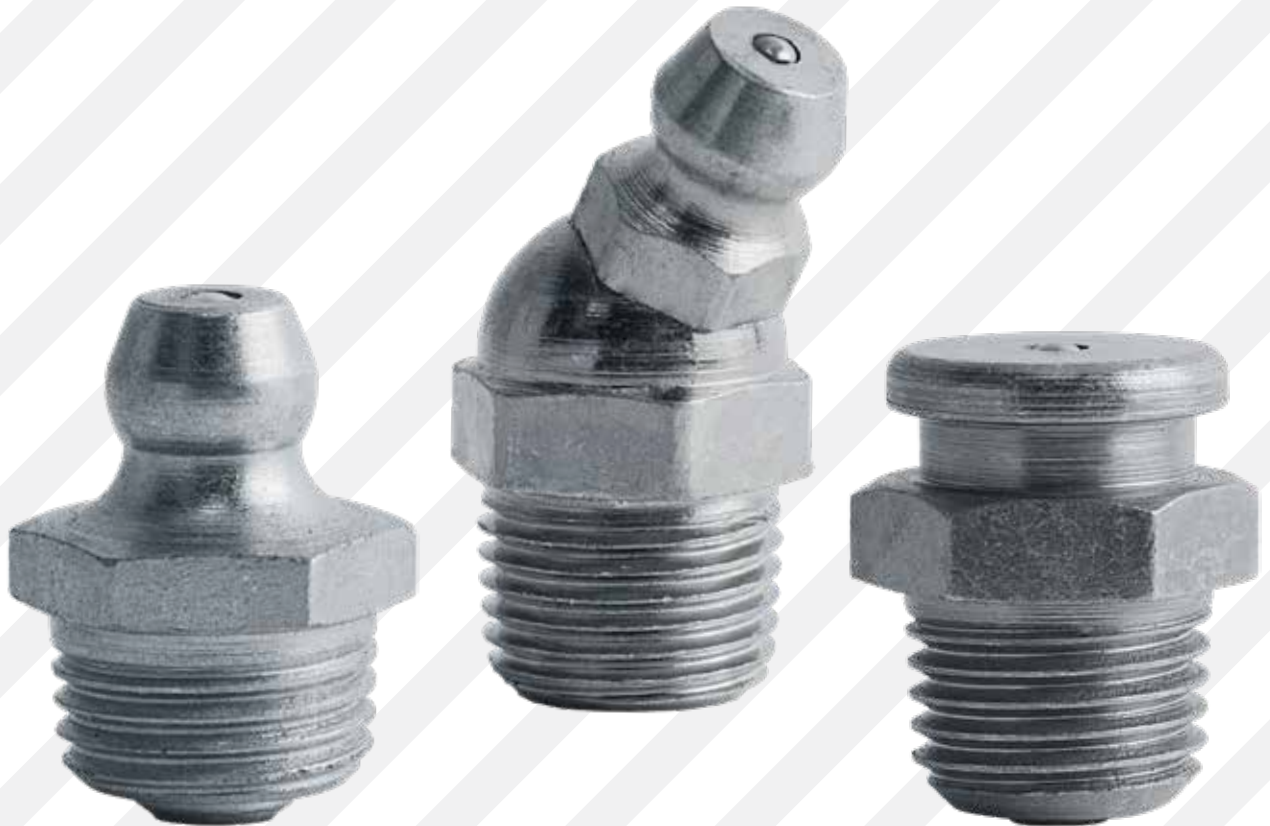




**Heritage**<sup>TM</sup>  
INDUSTRIAL

---



---

# **GREASE FITTINGS & ACCESSORIES**

*Quality without Compromise*

## Table of Contents

<b>Standard Grease Fittings.....</b>	<b>4</b>
Inch Grease Fittings.....	4
Metric Grease Fittings.....	6
Grease Fitting Caps.....	6
British Thread Fittings.....	8
German Thread Fittings.....	8
<b>Specialty Grease Fittings.....</b>	<b>9</b>
Vent Fittings.....	10
Flush Type Fittings.....	11
Button Head Fittings.....	12
Leak Proof Fitting.....	13
Dual Nipple Fittings.....	13
Grease Plugs.....	13
<b>Automatic Installation.....</b>	<b>14</b>
Thread Forming Fittings.....	14
Drive Type Fittings.....	15
Drive Fitting Tools.....	15

<b>Couplers.....</b>	<b>16</b>
Button Head Couplers.....	16
Flush Type Couplers.....	16
Needle Couplers.....	16
Hydraulic Couplers.....	16
Quick Connect Couplers.....	17
Loaders.....	17
Multi Tools.....	17
Fitting Unblocker Tool.....	17
<b>Miscellaneous.....</b>	<b>18</b>
Extensions, Elbows, & Adapters.....	18
<b>Grease Guns &amp; Accessories.....</b>	<b>19</b>
Grease Guns.....	19
Grease Hoses.....	19
Grease Gun Holder.....	19
Grease Gun Light.....	19

## About Heritage Industrial

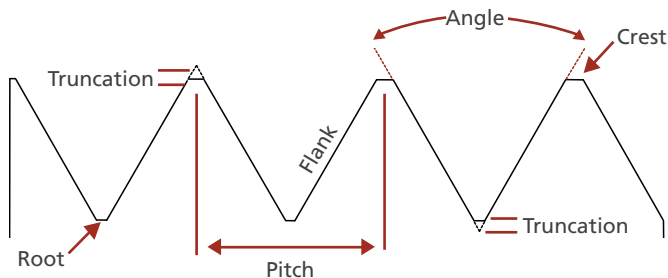
Huyett—an ISO 9001 certified manufacturer, master distributor, and importer of non-threaded fasteners, grease fittings, and engineered fasteners—is proud to offer a line of high-quality, attractively priced, Heritage Industrial™ Grease Fittings and Accessories.

Heritage Industrial Grease Fittings are designed to exacting standards and meet SAE J534 specifications for design and performance, and SAE J476 for threads. They are available in inch and metric sizes in a wide variety of materials and finishes.

In addition to grease fittings and accessories, Huyett offers Heritage Industrial Hose Clamps, Cotter Pins, Hammerlock Cotter Pins, Bridge Pins, Hair Pins, and Assortments.

For high quality parts and great prices, visit [www.huyett.com](http://www.huyett.com).

## Thread Terms



**Truncation** – Material removed from the theoretical V-thread triangle of the thread form.

**Crest** – Highest point of a thread, opposite the root.

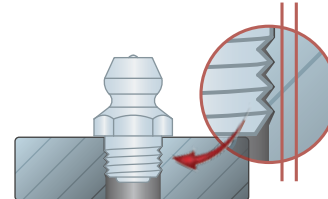
**Root** – The lowest point of a thread, opposite the crest.

**Flank** – Thread portion joining the thread root and crest.

**Angle** – The angle between the adjacent thread flanks.

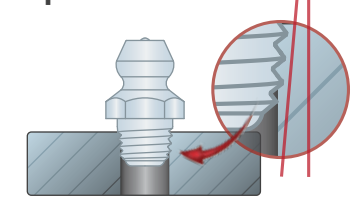
## Parallel vs. Taper Threads

### Parallel Threads

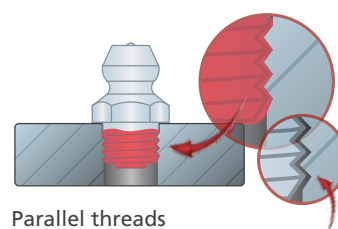


Parallel threads run PARALLEL to mating material.

### Taper Threads

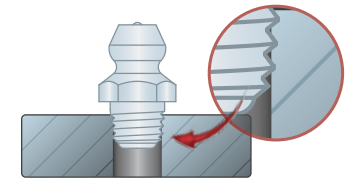


Taper threads run DIAGONAL to mating material.

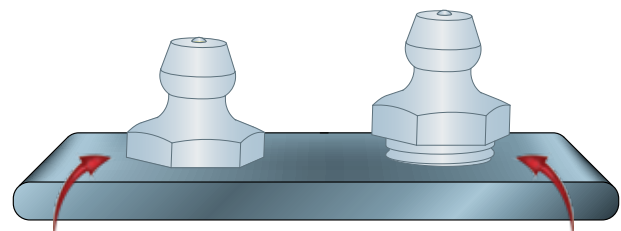


Parallel threads ALWAYS require the use of thread sealant to ensure a leak-proof seal.

Parallel threads without sealant.



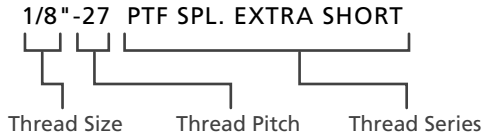
Some, but not all, taper threads are self-sealing.



Parallel threads seat on the shoulder as a screw would, providing consistently installed heights.

Taper threads do not seat flush, leaving some threads exposed resulting in less consistently installed heights.

## Thread Description



### Thread Size

Thread size is the nominal size of pipe that a fitting mates with. Originally, the size referred to the inside diameter of the pipe at a time when pipes had very thick walls. That is why a 1/8" pipe has a 0.393" actual outside diameter.

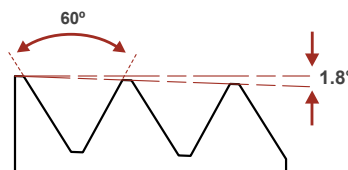
## Thread Series

### SAE-LT

*Society of Automotive Engineers*

- Taper Thread
- Self-sealing

Used on industrial machines and many other standard-duty applications.

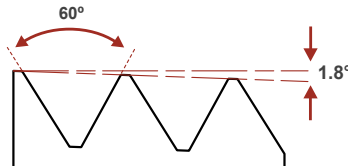


### PTF

*American Standard Pipe Thread*

- Taper Thread
- Self-sealing

Feature dry seal threads specially designed to form a leak-free seal without the use of thread sealant. The seal is created by controlling truncation at the crest and root of NPT form threads to allow for an interference fit, closing the pathway and preventing spiral leakage.

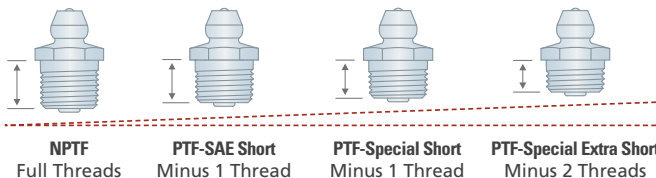
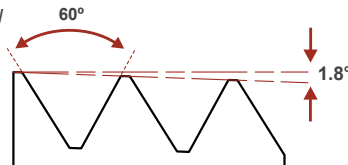


### NPTF

*American Standard Pipe Thread Fuel*

- Taper Thread
- Self-sealing

Feature dry seal threads specially designed to form a leak-free seal without the use of thread sealant. The seal is created by controlling truncation at the crest and root of NPT form threads to allow for an interference fit, closing the pathway and preventing spiral leakage.

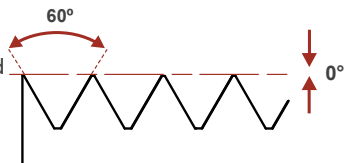


### UNF

*Unified National Fine Thread*

- Parallel Thread
- Thread sealant recommended

A common mechanical thread type used in the U.S. for screws and bolts.



### Thread Pitch

Thread pitch refers to the distance "peak-to-peak" of each thread. Threads grouped close together are considered to be "fine," while threads that are spread out are "coarse."

### Thread Series

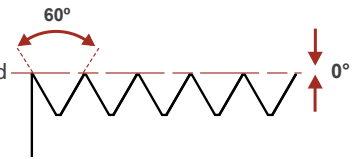
Thread series is the thread style of a given grease fitting. There are many different thread series and each has specific attributes.

### UNEF

*Unified National Extra Fine Thread*

- Parallel Thread
- Thread sealant recommended

A common mechanical thread type, similar to UNF, but with a finer thread count.

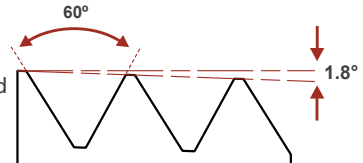


### ISO METRIC

*Foreign Standard Pipe Thread*

- Taper Thread
- Thread sealant recommended

ISO Metric threads were one of the first international standards agreed upon when the International Organization for Standardization was created in 1947.

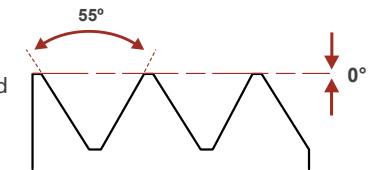


### BSPP

*British Standard Pipe Parallel*

- Parallel Thread
- Thread sealant recommended

Coarse threaded Whitworth form threads with a parallel thread profile.

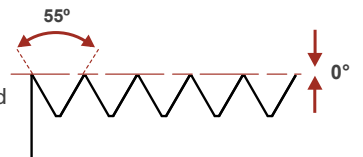


### BSF

*British Standard Fine*

- Parallel Thread
- Thread sealant recommended

Parallel threaded Whitworth form threads.

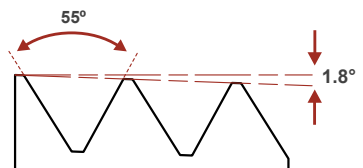


### BSPT

*British Standard Pipe Tapered*

- Taper Thread
- Thread sealant recommended

Whitworth form tapered male threads. Female threads are typically parallel.

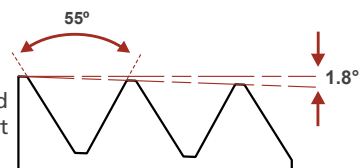


### German Thread

*British Standard Pipe Tapered*

- Taper Thread
- Thread sealant recommended

These are the thread equivalent to BSPT in Germany.



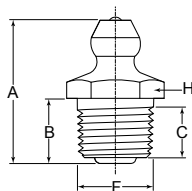
## Inch Grease Fittings

Available in straight and angled designs with a variety of thread types, standard grease fittings are ideal for a wide range of industrial, automotive, and agricultural applications.

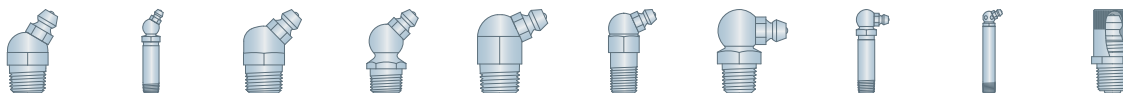
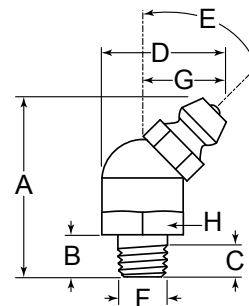
Other materials and finishes available upon request.  
 Part illustrations are not shown at actual size.

### PTF

American Standard Pipe Thread



- A Overall Length
- B Shank Length
- C Min. Thread Length
- D Overall Width
- E Angle
- F Thread Diameter
- G Swing Clearance
- H Hex

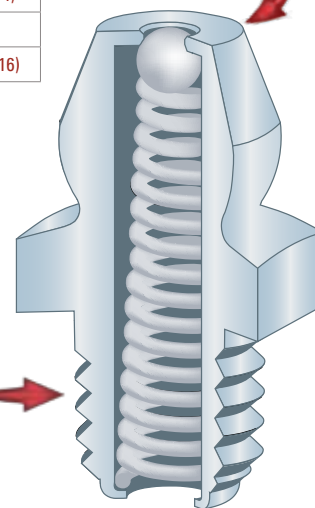


	1/8"-27									
Zinc Clear	H1611Z3	H1638Z3	H1689Z3	H1688Z3	H1612Z3	H1623Z3	H1613Z3	H1606Z3	H1649Z3	H1958Z3
Stainless	H1611S	—	H1689S	—	H1612S	—	H1613S	—	—	—
A	.900"	2.090"	.880"	1.070"	.860"	1.180"	.840"	1.810"	2.760"	1.000"
B	.300"	1.250" (1-1/4)	.280"	.280"	.300"	.540"	.300"	1.250" (1-1/4)	2.240"	.310"
C	.220"	.220"	.220"	.220"	.220"	.250" (1/4)	.220"	.310"	.190"	.190"
D	.560"	.560"	.620"	.620"	.720"	.720"	.720"	.730"	.660"	—
E	30°	30°	45°	45°	65°	65°	90°	90°	65°	—
F	.393"	.393"	.393"	.393"	.393"	.393"	.393"	.393"	.393"	.393"
G	.340"	.340"	.460"	.460"	.500" (1/2)	.500" (1/2)	.500" (1/2)	.520"	.470"	—
H	.437" (7/16)	.437" (7/16)	.437" (7/16)	.437" (7/16)	.437" (7/16)	.437" (7/16)	.437" (7/16)	.437" (7/16)	.375" (3/8)	.437" (7/16)



	1/8"-27							
Zinc Clear	H1644Z3	H1610Z3	—	H1607Z3	H1669Z3	H1684Z3	H1614Z3	H1609Z3
Stainless	H1644S	H1610S	H1961S	H1607S	—	—	—	—
A	.560"	.660"	.720"	1.250" (1-1/4)	1.750" (1-3/4)	2.620"	.720"	.750" (3/4)
B	.230"	.280"	.280"	.750" (3/4)	1.280"	2.160"	.280"	.340"
C	.150"	.180"	.181"	.220"	.220"	.220"	.180"	.250" (1/4)
F	.393"	.393"	.393"	.393"	.393"	.393"	.393"	.393"
H	.437" (7/16)	.437" (7/16)	.437" (7/16)	.437" (7/16)	.437" (7/16)	.437" (7/16)	.437" (7/16)	.437" (7/16)

Perfectly concentric head design – the ball is concentric within 1 micron (0.00004").



Rolled threads are cold worked for added strength.



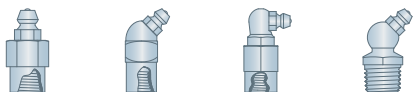
	1/4"-18			3/8"-18		
Zinc Clear	H1629Z3	H1690Z3	H1627Z3	H1714Z3	H1715Z3	H1716Z3
Stainless	—	—	H1627S	—	—	—
A	.970"	.950"	.880"	.900"	1.000"	.790"
B	.340"	.370"	.450"	.430"	.280"	.300"
C	.280"	.230"	.340"	.310"	.220"	.220"
D	.840"	.720"	—	—	.870"	1.060"
E	65°	90°	—	—	45°	90°
F	.523"	.523"	.523"	.648"	.648"	.648"
G	.560"	.440"	—	—	.530"	.730"
H	.562" (9/16)	.562" (9/16)	.562" (9/16)	.750" (3/4)	17.00 mm	17.00 mm

All Heritage Industrial fittings meet SAE J534 specifications.



## NPTF

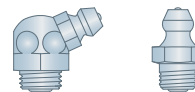
National Pipe Thread Fuel



	1/8"-27			1/4"-18
Zinc Clear	H1618Z3	H1620Z3	H1622Z3	H1645Z3
A	1.000"	1.130"	1.250" (1-1/4)	1.170"
B	.310"	.390"	.410"	.370"
C	.280"	.280"	.280"	.300"
D	—	.640"	.660"	.650"
E	—	45°	90°	45°
F	.393"	.393"	.393"	.523"
G	—	.330"	.410"	.370"
H	.500" (1/2)	.437" (7/16)	.500" (1/2)	.562" (9/16)

## UNEF

Unified National Extra Fine



	5/16"-32	
Zinc Clear	H1648Z3	H1631Z3
A	.630"	.660"
B	.130"	.220"
C	.110"	.170"
D	.700"	—
E	65°	—
F	.312" (5/16)	.312" (5/16)
G	.520"	—
H	.375" (3/8)	.375" (3/8)

## UNF

Unified National Fine Thread



	1/4"-28		5/16"-24			3/8"-24		1/2"-20	
Zinc Clear	H1770Z3	H1792Z3	H1712Z3	H1713Z3	H1711Z3	H1709Z3	H1708Z3	H1710Z3	H1740Z3
Stainless	—	H1792S	—	—	H1711S	—	—	H1710S	—
A	.610"	.480"	.830"	.710"	.660"	.980"	.790"	.640"	.890"
B	.130"	.140"	.210"	.210"	.200"	.220"	.220"	.240"	.260"
C	.080"	.080"	.170"	.170"	.120"	.150"	.150"	.140"	.150"
D	.580"	—	.580"	.750" (3/4)	—	.670"	.760"	—	.750" (3/4)
E	45°	—	45°	90°	—	45°	90°	—	45°
F	.250" (1/4)	.250" (1/4)	.312" (5/16)	.312" (5/16)	.312" (5/16)	.375" (3/8)	.375" (3/8)	.375" (3/8)	.500" (1/2)
G	.390" (25/64)	—	.390" (25/64)	.560"	—	.450"	.550"	—	.470"
H	.375" (3/8)	.156" (9/32)	.375" (3/8)	.375" (3/8)	.375" (3/8)	.437" (7/16)	.437" (7/16)	.437" (7/16)	.562" (9/16)

## SAE-LT

Society of Automotive Engineers

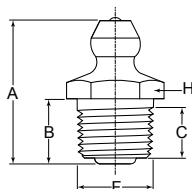


	1/4"-28									
Zinc Clear	H1641Z3	H1652Z3	H1680Z3	H1698Z3	H3014Z3	H1637Z3	H1636Z3	H3010Z3	H1911Z3	H1790Z3
Stainless	H1641S	H1652S	H1680S	—	—	H1637S	—	—	H1911S	—
A	.540"	.690"	.920"	1.120"	1.640" (1-41/64)	.820"	.940"	.780"	.750" (3/4)	.800"
B	.180"	.340"	.600"	.810"	1.000"	.200"	.300"	.300"	.200"	.300"
C	.100"	.200"	.250" (1/4)	.200"	.200"	.100"	.200"	.200"	.100"	.220"
D	—	—	—	—	—	.580"	.580"	.660"	.660"	.690"
E	—	—	—	—	—	45°	45°	65°	90°	90°
F	.223"	.223"	.223"	.223"	.223"	.223"	.223"	.223"	.223"	.223"
G	—	—	—	—	—	.390" (25/64)	.390" (25/64)	.470"	.470"	.500" (1/2)
H	.312" (5/16)	.312" (5/16)	.312" (5/16)	.312" (5/16)	.312" (5/16)	.375" (3/8)	.375" (3/8)	.375" (3/8)	.375" (3/8)	.375" (3/8)

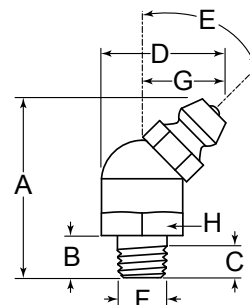
## Metric Grease Fittings

Available in straight and angled designs with ISO Metric Thread Diameters. Metric grease fittings are ideal for a wide range of industrial, automotive, and construction applications.

*Other materials and finishes available upon request.  
 Part illustrations are not shown at actual size.*



- A Overall Length
- B Shank Length
- C Min. Thread Length
- D Overall Width
- E Angle
- F Thread Diameter
- G Swing Clearance
- H Hex

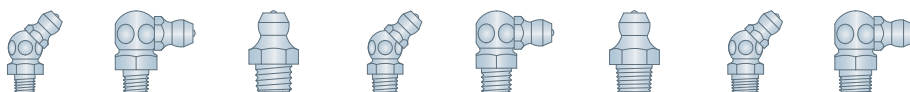


### ISO METRIC

Foreign Standard Pipe Thread

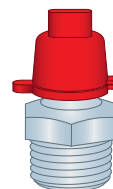


	M5 x 0.80			M6 x 0.75						
Zinc Clear	H2100Z3	H2101Z3	H2102Z3	H21165Z3	H211680Z3	H213014Z3	H2106Z3	H2115Z3	H2107Z3	H2108Z3
Stainless	H2100S	—	—	—	—	—	H2106S	H2115S	H2107S	H2108S
A	15.00 mm	23.50 mm	18.00 mm	17.30 mm	24.00 mm	41.00 mm	16.00 mm	15.00 mm	21.00 mm	18.00 mm
B	5.50 mm	5.50 mm	5.50 mm	8.50 mm	14.00 mm	31.00 mm	5.50 mm	5.50 mm	5.50 mm	5.50 mm
C	3.70 mm	3.70 mm	3.70 mm	5.00 mm	6.00 mm	5.00 mm	3.70 mm	3.70 mm	3.70 mm	3.70 mm
D	—	15.00 mm	17.00 mm	—	—	—	—	—	14.00 mm	16.00 mm
E	—	45°	90°	—	—	—	—	—	45°	90°
F	5.00 mm	5.00 mm	5.00 mm	6.00 mm	6.00 mm	6.00 mm	6.00 mm	6.00 mm	6.00 mm	6.00 mm
G	—	10.00 mm	13.00 mm	—	—	—	—	—	10.00 mm	12.00 mm
H	7.00 mm	9.00 mm	9.00 mm	7.00 mm	7.00 mm	7.00 mm	7.00 mm	7.00 mm	9.00 mm	9.00 mm

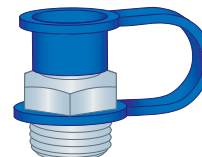


	M6 x 0.75		M7 x 1.00			M8 x 0.75		
Zinc Clear	H2116Z3	H2117Z3	H2139Z3	H2140Z3	H2141Z3	H2118Z3	H2119Z3	H2120Z3
A	23.50 mm	18.00 mm	15.00 mm	23.50 mm	18.00 mm	15.00 mm	23.50 mm	18.00 mm
B	5.50 mm	5.50 mm	5.50 mm	5.50 mm	5.50 mm	5.50 mm	5.50 mm	5.50 mm
C	3.70 mm	3.70 mm	3.70 mm	3.70 mm	3.70 mm	3.70 mm	3.70 mm	3.70 mm
D	15.00 mm	17.00 mm	—	15.00 mm	17.00 mm	—	15.00 mm	17.00 mm
E	45°	90°	—	45°	90°	—	45°	90°
F	6.00 mm	6.00 mm	7.00 mm	7.00 mm	7.00 mm	8.00 mm	8.00 mm	8.00 mm
G	10.00 mm	13.00 mm	—	10.00 mm	13.00 mm	—	10.00 mm	13.00 mm
H	9.00 mm	9.00 mm	9.00 mm	9.00 mm	9.00 mm	9.00 mm	9.00 mm	9.00 mm

### Dome Style Cap



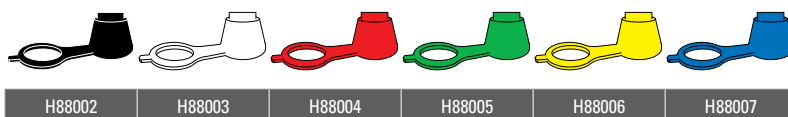
### Tab Style Cap



## Grease Fitting Caps

Grease fitting caps serve several purposes and they prevent contamination by covering the greasing nipple entirely. Though they are most commonly used to plan maintenance and distinguish which fittings to lubricate and when.

*Part illustrations are not shown at actual size.*



H88002	H88003	H88004	H88005	H88006	H88007
--------	--------	--------	--------	--------	--------



H88102	H88103	H88104	H88105	H88106	H88107
--------	--------	--------	--------	--------	--------



## ISO METRIC

Foreign Standard Pipe Thread



	M8 x 1.00				M8 x 1.25			M10 x 1.00	
Zinc Clear	H2104Z3	H2105Z3	H2103Z3	H2193Z3	H2113Z3	H2114Z3	H2112Z3	H2110Z3	H2111Z3
Stainless	H2104S	H2105S	H2103S	—	—	H2114S	H2112S	H2110S	H2111S
A	21.00 mm	18.00 mm	16.00 mm	18.50 mm	21.00 mm	18.00 mm	17.00 mm	21.00 mm	18.00 mm
B	5.50 mm	5.50 mm	5.50 mm	8.55 mm	5.50 mm	5.50 mm	5.50 mm	5.50 mm	5.50 mm
C	3.70 mm	3.70 mm	3.70 mm	4.00 mm	3.70 mm	3.70 mm	3.70 mm	3.70 mm	3.70 mm
D	14.00 mm	16.00 mm	—	—	14.00 mm	16.00 mm	—	16.00 mm	20.00 mm
E	45°	90°	—	—	45°	90°	—	45°	90°
F	8.00 mm	8.00 mm	8.00 mm	8.00 mm	8.00 mm	8.00 mm	8.00 mm	10.00 mm	10.00 mm
G	9.80 mm	12.00 mm	—	—	9.80 mm	12.00 mm	—	11.00 mm	15.00 mm
H	9.00 mm	9.00 mm	9.00 mm	9.00 mm	9.00 mm	9.00 mm	9.00 mm	11.00 mm	11.00 mm



	M10 x 1.00		M10 x 1.25			M10 x 1.50		M12 x 1.00	
Zinc Clear	H2109Z3	H211610Z3	H2137Z3	H2138Z3	H2136Z3	H2123Z3	H2121Z3	H2142Z3	H2144Z3
Stainless	H2109S	—	—	—	—	—	—	—	—
A	16.00 mm	17.50 mm	25.00 mm	20.00 mm	15.00 mm	18.00 mm	18.00 mm	17.50 mm	22.00 mm
B	5.50 mm	7.50 mm	5.50 mm	5.50 mm	5.50 mm	5.50 mm	5.50 mm	6.50 mm	6.50 mm
C	3.70 mm	4.00 mm	3.70 mm	3.70 mm	3.70 mm	3.70 mm	3.70 mm	3.70 mm	3.70 mm
D	—	—	17.00 mm	19.00 mm	—	20.00 mm	—	—	23.00 mm
E	—	—	45°	90°	—	90°	—	—	90°
F	10.00 mm	10.00 mm	10.00 mm	10.00 mm	10.00 mm	10.00 mm	10.00 mm	12.00 mm	12.00 mm
G	—	—	11.00 mm	14.00 mm	—	15.00 mm	—	—	16.00 mm
H	11.00 mm	11.00 mm	11.00 mm	11.00 mm	11.00 mm	11.00 mm	11.00 mm	14.00 mm	14.00 mm

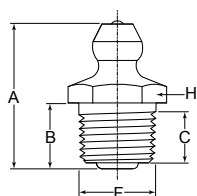
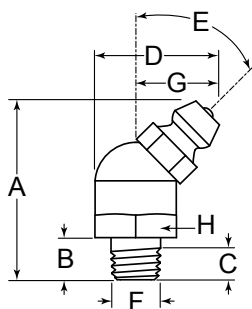


	M12 x 1.25	M12 x 1.50			M12 x 1.75			M16 x 1.50	
Zinc Clear	H2145Z3	H2124Z3	H2125Z3	H2126Z3	H2148Z3	H2149Z3	H2150Z3	H2151Z3	H2152Z3
Stainless	—	H2124S	—	—	—	—	—	—	—
A	17.50 mm	17.50 mm	22.50 mm	22.00 mm	17.50 mm	22.50 mm	22.00 mm	18.00 mm	25.50 mm
B	6.50 mm	6.50 mm	6.50 mm	6.50 mm	6.50 mm	6.50 mm	6.50 mm	7.00 mm	7.00 mm
C	3.70 mm	3.70 mm	3.70 mm	3.70 mm	3.70 mm	3.70 mm	3.70 mm	4.00 mm	4.00 mm
D	—	—	19.00 mm	23.00 mm	—	19.00 mm	23.00 mm	—	22.00 mm
E	—	—	45°	90°	—	45°	90°	—	45°
F	12.00 mm	12.00 mm	12.00 mm	12.00 mm	12.00 mm	12.00 mm	12.00 mm	16.00 mm	16.00 mm
G	—	—	12.00 mm	16.00 mm	—	12.00 mm	16.00 mm	—	13.00 mm
H	14.00 mm	14.00 mm	14.00 mm	14.00 mm	14.00 mm	14.00 mm	14.00 mm	17.00 mm	17.00 mm

## British Thread Fittings

British taper threads are commonly used in Europe. Caution should be used when measuring these threads, as they are very close in size to PTF.

Other materials and finishes available upon request.  
Part illustrations are not shown at actual size.



- A Overall Length
- B Shank Length
- C Min. Thread Length
- D Overall Width
- E Angle
- F Thread Diameter
- G Swing Clearance
- H Hex

## BSF

British Standard Fine Threads



	1/4"-26			5/16"-22		3/8"-20	
Zinc Clear	H2701Z3	H2702Z3	H2700Z3	H2704Z3	H2703Z3	H2708Z3	H2706Z3
Stainless	H2701S	H2702S	H2700S	—	—	—	—
A	.930"	.710"	.590"	.930"	.590"	.790"	.590"
B	.220"	.220"	.220"	.220"	.220"	.220"	.220"
C	.150"	.150"	.150"	.150"	.150"	.150"	.150"
D	.590"	.670"	—	.590"	—	.750" (3/4)	—
E	45°	90°	—	45°	—	90°	—
F	.250" (1/4)	.250" (1/4)	.250" (1/4)	.312" (5/16)	.312" (5/16)	.375" (3/8)	.375" (3/8)
G	.390" (25/64)	.510"	—	.390" (25/64)	—	.550"	—
H	9.00 mm	9.00 mm	7.00 mm	9.00 mm	9.00 mm	11.00 mm	11.00 mm

## BSPT

British Standard Pipe Threads

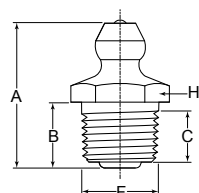


	1/8"-28			1/4"-19		3/8"-19	
Zinc Clear	H2601Z3	H2602Z3	H2600Z3	H2604Z3	H2605Z3	H2603Z3	H2606Z3
Stainless	H2601S	H2602S	H2600S	H2604S	H2605S	H2603S	—
A	.980"	.790"	.630"	.890"	.870"	.690"	.710"
B	.220"	.220"	.220"	.260"	.260"	.260"	.280"
C	.150"	.150"	.150"	.150"	.150"	4.20 mm	.160"
D	.670"	.750" (3/4)	—	.750" (3/4)	.910"	—	—
E	45°	90°	—	45°	90°	—	—
F	.380"	.380"	.380"	.470"	.470"	.470"	.630"
G	.430"	.550"	—	.470"	.630"	—	—
H	11.00 mm	11.00 mm	11.00 mm	14.00 mm	14.00 mm	14.00 mm	17.00 mm

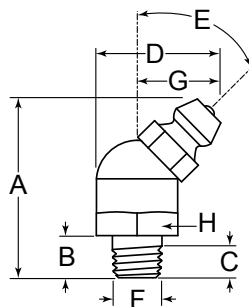
## German Thread Fittings

What is often referred to as German threads are really a German designation of British Standard Pipe Tapered threads.

Other materials and finishes available upon request.  
Part illustrations are not shown at actual size.

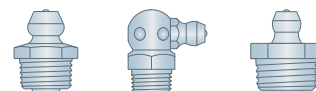


- A Overall Length
- B Shank Length
- C Min. Thread Length
- D Overall Width
- E Angle
- F Thread Diameter
- G Swing Clearance
- H Hex



## R

British Standard Pipe Threads – German

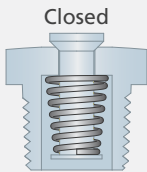


	R 1/8		R 1/4
Zinc Clear	H2610Z3	H2612Z3	H2613Z3
Stainless	H2610S	H2612S	H2613S
A	15.00 mm	18.00 mm	17.50 mm
B	5.50 mm	5.50 mm	6.50 mm
C	3.81 mm	3.81 mm	4.20 mm
D	—	19.50 mm	—
E	—	90°	—
F	.380"	.380"	.470"
G	—	14.00 mm	—
H	11.00 mm	11.00 mm	14.00 mm

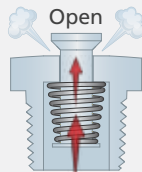
## Types of Specialty Fittings:

### Vent

Vent fittings open and close within a predetermined pressure range. As internal pressures rise, the plunger or ball check opens, allowing pressure to vent out through the fitting. As pressures decrease to below the minimum threshold, the valve closes. Vent fittings are available in either a top vent or side vent designs.



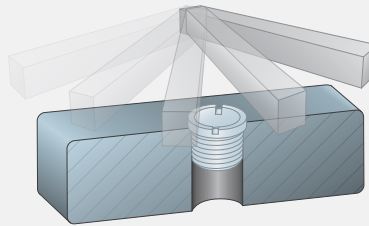
The basic design consists of a spring that controls a pop-up valve. At peak performance, the valve is closed, sealing the bearing.



Once internal pressures reach the predetermined opening PSI, the pop-up valve engages and the fitting allows pressure to escape.

### Flush Type

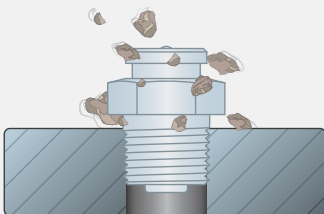
Flush type fittings use a variety of styles and drive systems, but the principal designs are all the same. A flush design yields a low profile which shields the part from flying debris, or from nearby moving parts. The compact design of the flush type fitting allows for use on shafts, pulleys, and other rotating assemblies.



Flush type fittings are ideal for applications with hard to lubricate areas and/or in low clearance areas.

### Button Head

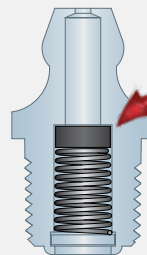
Button head fittings are compact, relatively flush, and used in heavy-duty applications. The head design minimizes damage from flying debris such as in coal mines or on material handling conveyors. A conventional ball check system is deployed, yielding a 6,000 PSI operating pressure rating.



Button head fittings are designed to withstand repetitive abuse from harsh environments.

### Leak Proof

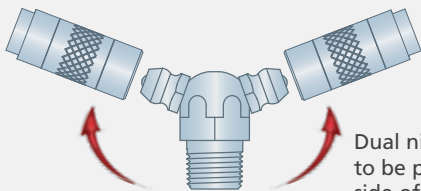
Leak proof fittings use a rubber seal rather than a ball check for light oils and hydraulic fluids. It is important to keep input passages free from contamination. In critical applications where back pressure is needed, it is recommended that seals be redundant. Leak proof fittings are recommended for pressures up to 5,000 PSI. They are not suitable as check valves where high sustained back pressure is prevalent.



The seal provides leak-free performance, so as to prevent contamination from grease back pressure.

### Dual Nipple

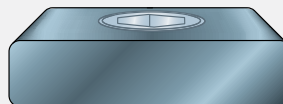
Dual greasing nipples provide multiple access points where moving parts change fitting orientation, such as u-joints.



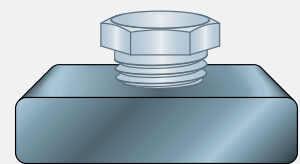
Dual nipples allow lubrication to be performed from either side of a machine, or where assembly rotation changes orientation and access to greasing nipples.

### Plugs

Plugs are used to seal off threaded holes in a variety of applications including oil galleys, water jackets, vacuum manifolds, and header blocks. They can also be used to temporarily fill a hole to prevent debris from accumulating in the opening.



Socket plug installed flush.

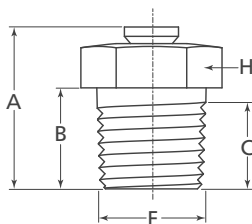


Hex head plug installed above surface.

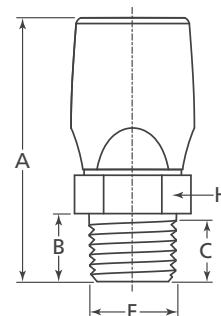
## Vent Fittings

These grease fittings are designed to allow air to escape as inside temperatures and pressures build up in working components. Vent fittings release excessive pressure which may accumulate during operation of a bearing housing or gearbox. Install above fluid level.

Other materials and finishes available upon request.  
Part illustrations are not shown at actual size.

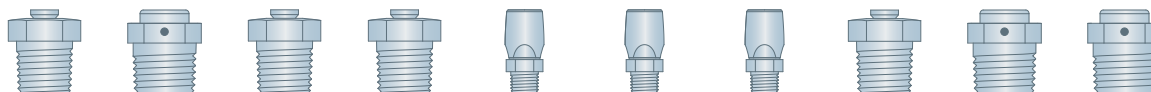


A Overall Length  
B Shank Length  
C Min. Thread Length  
F Thread Diameter  
H Hex

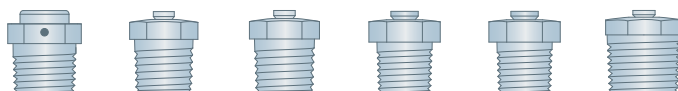


### PTF

American Standard Pipe Thread

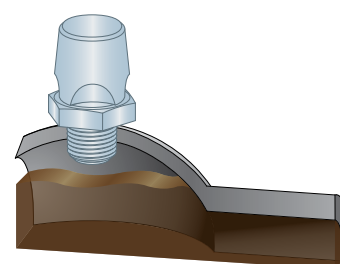


	1/8"-27									
Zinc Clear	H47200Z3	H5678Z3	H317400Z3	H323060Z3	H131000Z3	H300805Z3	H327240Z3	H369593Z3	H5677Z3	H5679Z3
Opening PSI	1-5 PSI	7.500-15 PSI	.250-1 PSI	15-25 PSI	.430 PSI	.040-.110 PSI	1-1.500 PSI	100-200 PSI	1-5 PSI	15-25 PSI
A	.500" (1/2)	.500" (1/2)	.500" (1/2)	.500" (1/2)	1.000"	1.000"	1.000"	.500" (1/2)	.500" (1/2)	.500" (1/2)
B	.300"	.280"	.300"	.300"	.260"	.270"	.260"	.300"	.280"	.280"
C	.200"	.173"	.200"	.200"	.190"	.190"	.190"	.200"	.170"	.170"
F	.393"	.393"	.393"	.393"	.393"	.393"	.393"	.393"	.393"	.393"
H	.437" (7/16)	.437" (7/16)	.437" (7/16)	.437" (7/16)	.437" (7/16)	.437" (7/16)	.437" (7/16)	.437" (7/16)	.437" (7/16)	.437" (7/16)



	1/8"-27	1/4"-18				3/8"-18
Zinc Clear	H5680Z3	H47202Z3	H317402Z3	H323062Z3	H47642Z3	H47204Z3
Opening PSI	45-80 PSI	1-5 PSI	.250-1 PSI	15-25 PSI	7.500-15 PSI	1-5 PSI
A	.500" (1/2)	.670"	.670"	.670"	.670"	.710"
B	.280"	.420"	.420"	.420"	.420"	.500" (1/2)
C	.170"	.270"	.270"	.270"	.270"	.340"
F	.393"	.523"	.523"	.523"	.523"	.648"
H	.437" (7/16)	.562" (9/16)	.562" (9/16)	.562" (9/16)	.562" (9/16)	.687" (11/16)

### Above Fluid Level vs. Below Fluid Level



### NPTF

National Pipe Thread Fuel



	1/4"-18	1/2"-14	
Zinc Clear	H47222Z3	H317406Z3	H323066Z3
Opening PSI	1-5 PSI	.250-1 PSI	15-25 PSI
A	1.060"	1.160"	1.160"
B	.460"	.550"	.550"
C	.523"	.420"	.420"
F	.523"	.820"	.820"
H	.562" (9/16)	.812" (13/16)	.812" (13/16)

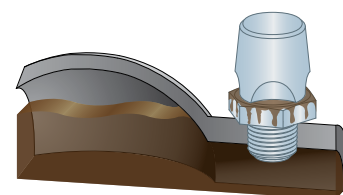
### ISO METRIC

Foreign Standard Pipe Thread



	M10 x 1.00
Zinc Clear	H47900Z3
Opening PSI	70 PSI
A	11.00 mm
B	6.00 mm
C	5.50 mm
F	9.80 mm
H	11.00 mm

Vents are designed to be used above the fluid level.



If the vent is below the fluid level, the fluid will leak out through the fitting.



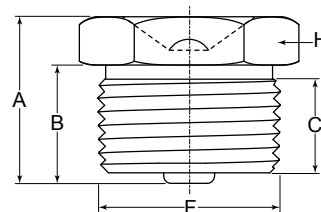
## Flush Type Fittings

Flush type fittings have a low profile which shields the fitting from flying debris or nearby moving parts. These fittings are for applications where a protruding greasing nipple may be impractical.

*Other materials and finishes available upon request.  
Part illustrations are not shown at actual size.*

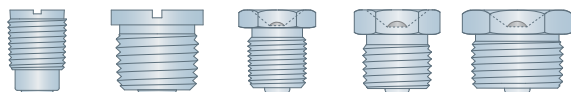
**Flush Type Couplers are available on page 16.**

- A Overall Length
- B Shank Length
- C Min. Thread Length
- F Thread Diameter
- H Hex



## NPTF

National Pipe Thread Fuel



	1/8"-27		3/8"-18	1/2"-14	3/4"-14
Zinc Clear	H1452Z3	H1815Z3	H1841Z3	H1842Z3	H1843Z3
A	.530"	.360"	.810"	.850"	.870"
B	—	.300"	.630"	.600"	.600"
C	.280"	.220"	.380"	.380"	.380"
F	.393"	.393"	.648"	.820"	1.010"
H	.390" (25/64)	.406" (13/32)	.750" (3/4)	.875" (7/8)	1.000"

## UNF

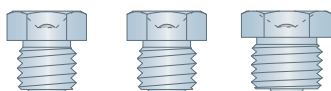
Unified National Fine Thread



	1/4"-28
Zinc Clear	H1851Z3
A	.410"
B	.300"
C	.190"
F	.250" (1/4)
H	.312" (5/16)

## ISO METRIC

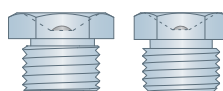
Foreign Standard Pipe Thread



	M6 x 0.75	M6 x 1.00	M8 x 1.00
Zinc Clear	H2415Z3	H2406Z3	H2403Z3
A	8.50 mm	8.50 mm	9.50 mm
B	5.50 mm	5.50 mm	6.50 mm
C	3.70 mm	3.70 mm	3.70 mm
F	6.00 mm	6.00 mm	7.90 mm
H	7.00 mm	7.00 mm	9.00 mm

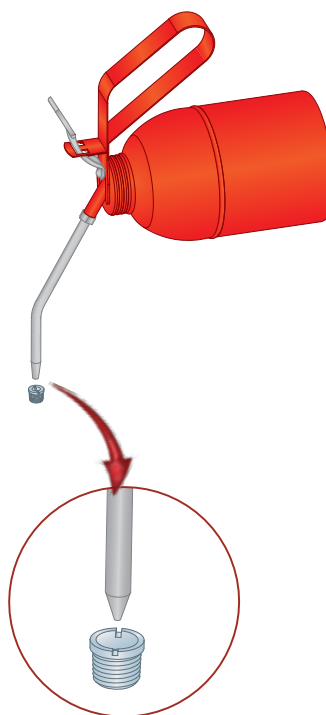
## BSPP

British Standard Pipe Parallel



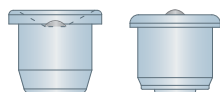
	1/8"-28	1/4"-19
Zinc Clear	H2900Z3	H2903Z3
A	.370"	.550"
B	.260"	.370"
C	.150"	.170"
F	.380"	.470"
H	11.00 mm	14.00 mm

## Service Suggestion



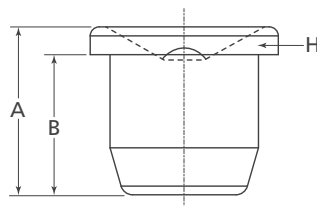
In light duty applications, a standard oil can may be used.

## Inch – Drive Type



	1/4"	5/16"
Zinc Clear	H1885Z3	H1814Z3
A	.280"	.330"
B	.230"	.280"
H	.312" (5/16)	.375" (3/8)

- A Overall Length
- B Shank Length
- H Hex



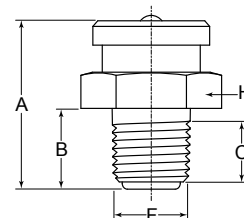
## Button Head Fittings

Button head fittings' flat head design minimizes damage from flying debris. They are popular in rugged applications such as on conveyors, mining equipment, and agricultural equipment.

*Other materials and finishes available upon request.  
Part illustrations are not shown at actual size.*

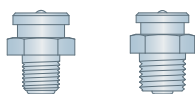
**Button Head Couplers are available on page 16.**

A Overall Length  
B Shank Length  
F Thread Diameter  
H Hex



### PTF – Ball Check

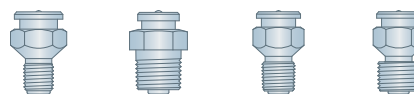
American Standard Pipe Thread



	1/8"-27	1/4"-28
Zinc Clear	H1184Z3	H1186Z3
Stainless	H1184S	H1186S
A	.750" (3/4)	.850"
B	.340"	.440"
F	.393"	.523"
H	.625" (5/8)	.625" (5/8)

### NPTF – Ball Check

National Pipe Thread Fuel



	1/4"-18	3/8"-18	1/2"-18
Zinc Clear	H1823Z3	H1188Z3	H1820Z3
Stainless	—	H1188S	—
A	1.310"	1.060"	1.410"
B	.500" (1/2)	.590"	.670"
F	.523"	.648"	.820"
H	.875" (7/8)	.750" (3/4)	.875" (7/8)

### NPTF – Plunger

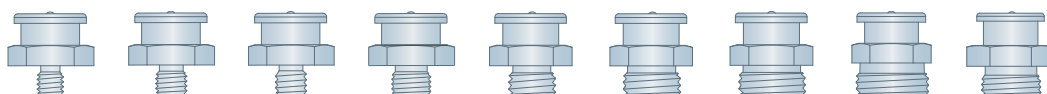
National Pipe Thread Fuel



	1/4"-18
Zinc Clear	HA1186Z3
A	.830"
B	.420"
F	.523"
H	.625" (5/8)

### ISO METRIC – Ball Check

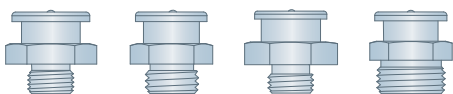
Foreign Standard Pipe Thread



	M6 x 1.00	M8 x 1.00	M8 x 1.25	M10 x 1.00	M10 x 1.50	M12 x 1.50	M14 x 1.50	M16 x 1.50
Zinc Clear	H2306Z3	H2303Z3	H2304Z3	H2309Z3	H2311Z3	H2315Z3	H2319Z3	H2323Z3
Stainless	H2306S	H2303S	H2304S	H2309S	—	H2315S	—	—
A	17.00 mm	17.00 mm	17.00 mm	17.00 mm	17.00 mm	17.00 mm	17.00 mm	18.00 mm
B	6.00 mm	6.00 mm	6.00 mm	6.00 mm	6.00 mm	6.00 mm	6.00 mm	7.00 mm
F	6.00 mm	7.90 mm	7.90 mm	9.80 mm	9.80 mm	11.80 mm	13.70 mm	15.60 mm
H	17.00 mm	17.00 mm	17.00 mm	17.00 mm	17.00 mm	17.00 mm	17.00 mm	22.00 mm

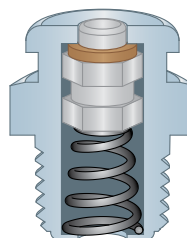
### BSPP – Ball Check

British Standard Pipe Parallel

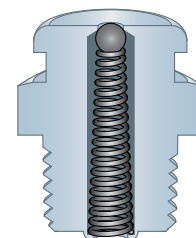


	1/8"-28	1/4"-19	3/8"-19
Zinc Clear	H2800Z3	H2803Z3	H2806Z3
Stainless	H2800S	H2803S	—
A	.670"	.670"	.830"
B	.240"	.240"	.280"
F	.380"	.470"	.630"
H	17.00 mm	17.00 mm	22.00 mm

### Plunger Check vs. Ball Check



Fittings with plunger checks are more tolerant of high back pressures and allow larger volumes of lubricant to flow into the assembly.



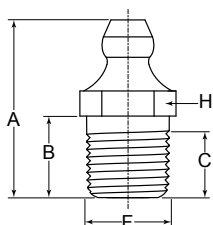
Fittings with ball checks are cost-effective while providing adequate back pressure protection in most applications.

## Leak Proof Fittings

Leak proof fittings use a rubber seal rather than a ball check for light oils and hydraulic fluids. Leak proof fittings are recommended for pressures up to 5,000 PSI.

*Other materials and finishes available upon request.  
Part illustrations are not shown at actual size.*

- A Overall Length
- B Shank Length
- C Min. Thread Length
- F Thread Diameter
- H Hex



### PTF

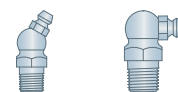
American Standard Pipe Thread



	1/8"-27	
Zinc Clear	H1634Z3	H1650Z3
A	.850"	.840"
B	.380"	.380"
C	.230"	.270"
F	.393"	.393"
H	.437" (7/16)	.437" (7/16)

### NPTF

National Pipe Thread Fuel



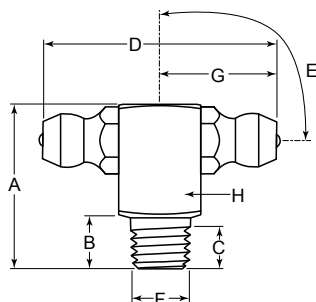
	1/8"-27	
Zinc Clear	H1692Z3	H1693Z3
A	1.220"	.970"
B	.380"	.380"
C	.270"	.270"
D	.560"	.720"
E	30°	90°
F	.393"	.393"
G	.330"	.500" (1/2)
H	.437" (7/16)	.437" (7/16)

## Dual Nipple Fittings

Dual nipples allow lubrication to be performed from either side of a machine, or where assembly rotation changes orientation and access to greasing nipples.

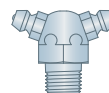
*Other materials and finishes available upon request.  
Part illustrations are not shown at actual size.*

- A Overall Length
- B Shank Length
- C Min. Thread Length
- D Overall Width
- E Angle
- F Thread Diameter
- G Swing Clearance
- H Hex



### PTF

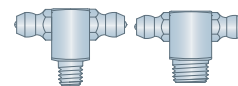
American Standard Pipe Thread



	1/8"-27
Zinc Clear	H2X369574Z3
A	.840"
B	.300"
C	.190"
D	1.100"
E	70°
F	.393"
G	.550"
H	.500" (1/2)

### ISO METRIC

Foreign Standard Pipe Thread



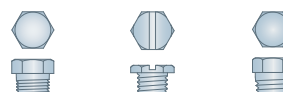
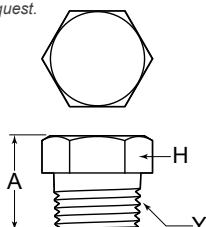
	M6 x 1.00	M10 x 1.00
Zinc Clear	H2X2108Z3	H2X2111Z3
A	18.00 mm	18.00 mm
B	5.50 mm	5.50 mm
C	3.70 mm	3.70 mm
D	29.00 mm	30.00 mm
E	90°	90°
F	6.00 mm	10.00 mm
G	14.00 mm	15.00 mm
H	9.00 mm	11.00 mm

## Grease Plugs

Plugs are used to seal off threaded holes in a variety of applications including in oil galleys, water jackets, vacuum manifolds and header blocks. They can also be used to temporarily fill a hole when welding is performed nearby to prevent debris from accumulating in the opening.

*Other materials and finishes available upon request.  
Part illustrations are not shown at actual size.*

- A Overall Length
- H Hex
- Y Male Thread

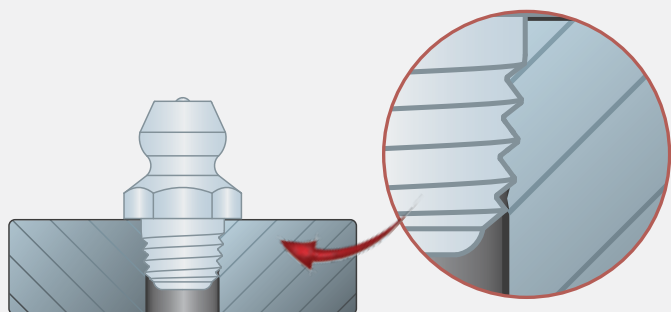
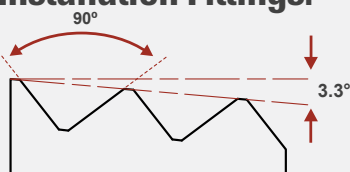


	1/8"-27 NPT	1/4"-28 SAE-LT	1/4"-28 SAE-Thread Forming
Zinc Clear	H12511	H328224Z3	H700337Z3
A	.440"	.330"	.310"
H	.437" (7/16)	.312" (5/16)	.281" (9/32)
Y	1/8"-27	1/4"-28	1/4"-28

## Types of Automatic Installation Fittings:

### Thread Forming

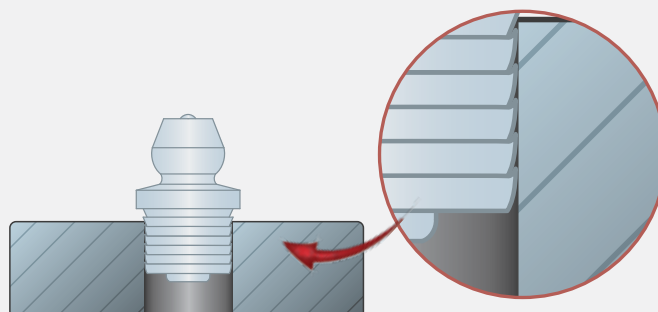
Ideal for high-volume assembly line applications, thread forming threads are made out of case-hardened steel and designed for untapped holes.



Thread forming fittings displace material instead of removing it. The process is cleaner, cheaper, easier, and produces superior results when compared to conventional tapping methods.

### Drive Type

Drive type fittings can have a serrated shank, or a plain, smooth shank. Typical installation requires driving or pounding the fitting into a drilled, untapped hole. The serrations deform to provide a leak-free seal.

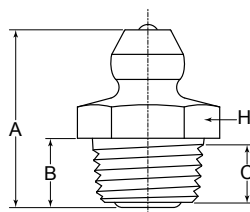


Upon installation, the serrations of drive type fittings deform to grip the material's surface and provide a leak-free seal.

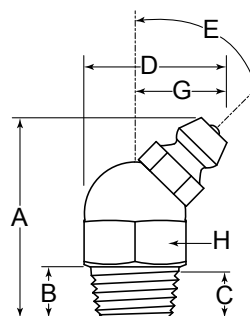
## Thread Forming Fittings

Thread forming threads possess a larger thread angle and are hardened, which enables them to be installed and create threads in an untapped hole without deformation. Standard SAE-LT and PTF fittings may be used to replace a thread forming fitting.

*Other materials and finishes available upon request.  
Part illustrations are not shown at actual size.*



- A Overall Length
- B Shank Length
- C Min. Thread Length
- D Overall Width
- E Angle
- F Thread Diameter
- G Swing Clearance
- H Hex



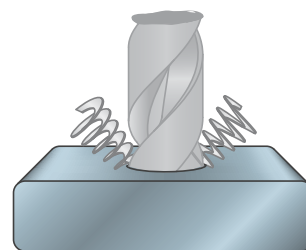
## SAE-Thread Forming

*Society of Automotive Engineers*



	1/8"-27			1/4"-28			
Zinc Clear	H1720Z3	H369579Z3	H1723Z3	H3038Z3	H369582Z3	H3053Z3	H3054Z3
A	.620"	.700"	.760"	.550"	.510"	.810"	.750" (3/4)
B	.240"	.320"	.200"	.190"	.190"	.190"	.190"
C	.140"	.210"	.140"	.100"	.120"	.160"	.160"
D	—	—	.720"	—	—	.580"	.660"
E	—	—	90°	—	—	45°	90°
F	.125" (1/8)	.125" (1/8)	.125" (1/8)	.250" (1/4)	.250" (1/4)	.250" (1/4)	.250" (1/4)
G	—	—	.500" (1/2)	—	—	.390" (25/64)	.470"
H	.437" (7/16)	.437" (7/16)	.437" (7/16)	.312" (5/16)	.281" (9/32)	.375" (3/8)	.375" (3/8)

## Automatic Installation Fittings

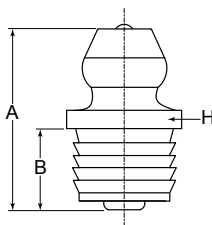


Automatic installation fittings only require a hole to be drilled for installation, making them a cheap and easy solution compared to other grease fittings which require a drilled and tapped hole.

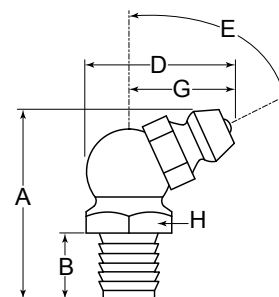
## Drive Type Fittings

Drive type fittings do not require a threaded hole decreasing the cost of installation. Some are equipped with a hex shoulder to assist in orientation. Drive type fittings are not recommended for high pressure applications.

*Other materials and finishes available upon request.  
Part illustrations are not shown at actual size.*



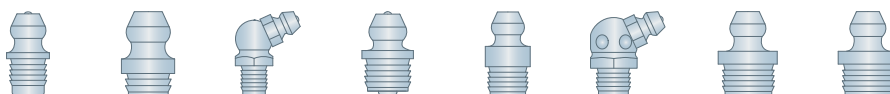
A Overall Length  
B Shank Length  
D Overall Width  
E Angle  
G Swing Clearance  
H Hex



### Inch

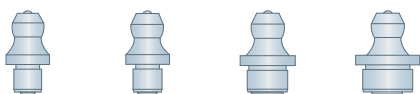


	1/8"		3/16"						
Zinc Clear	H1736Z3	H3019Z3	H1633Z3	H1728Z3	H3005Z3	H3009Z3	H700504Z3	H1646Z3	H1992Z3
Stainless	—	—	—	H1728S	—	—	—	—	—
A	.560"	.470"	.630"	.520"	.470"	.390" (25/64)	.480"	.700"	.830"
B	.250" (1/4)	.160"	.250" (1/4)	.250" (1/4)	.170"	.100"	.170"	.220"	.220"
D	—	—	—	—	—	—	—	.660"	.580"
E	—	—	—	—	—	—	—	65°	45°
G	—	—	—	—	—	—	—	.470"	.390" (25/64)
H	.312" (5/16)	.312" (5/16)	.312" (5/16)	.312" (5/16)	.312" (5/16)	.312" (5/16)	.312" (5/16)	.375" (3/8)	.375" (3/8)



	1/4"			5/16"			3/8"	
Zinc Clear	H1743Z3	H1952Z3	H1744Z3	H1608Z3	H1699Z3	H1630Z3	H1666Z3	H5036Z3
Stainless	H1743S	—	—	—	—	—	—	—
A	.580"	.470"	.760"	.550"	.630"	.700"	.580"	.660"
B	.260"	.130"	.280"	.250" (1/4)	.220"	.220"	.220"	.250" (1/4)
D	—	—	.660"	—	—	.660"	—	—
E	—	—	65°	—	—	65°	—	—
G	—	—	.470"	—	—	.470"	—	—
H	.343" (11/32)	.343" (11/32)	.375" (3/8)	.375" (3/8)	.343" (11/32)	.375" (3/8)	.437" (7/16)	.437" (7/16)

### Metric

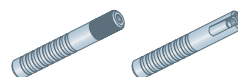


	M5	M6	M8	M10
Zinc Clear	H2500Z3	H2506Z3	H2503Z3	H2509Z3
A	15.00 mm	15.00 mm	14.70 mm	15.00 mm
B	5.50 mm	5.50 mm	5.30 mm	5.50 mm
H	8.00 mm	8.00 mm	10.00 mm	12.00 mm

## Drive Fitting Tools

Drive tools are designed to ease the installation of drive type fittings. Their special design holds and guides grease fittings as they are driven into place, reducing the risk of damage. They are available for both straight and angled drive type fittings.

*Part illustrations are not shown at actual size.*

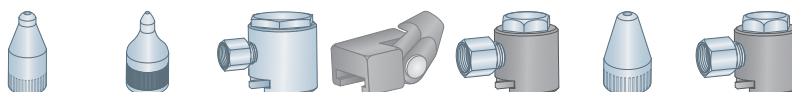


H83200	H83250
Straight	Angled

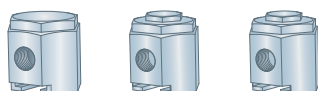
## Button Head Couplers

Button head couplers are designed to push or pull over the head of a button head grease fitting. The slot opening for the standard button head couplers is designed for a 5/8" and 15.00 mm button head grease fitting.

Part illustrations are not shown at actual size.



	1/8"-27 NPTF				1/8"-27 NPT	M10 x 1.00	
Part #	H84200	H84205	H84475	H84415	H84425	H84225	H84440
Type	Flush	Flush	Button Head	Button Head	Button Head	Flush	Button Head



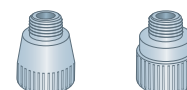
	7/16-27 UNS		
Part #	H84400Z3	H84450Z3	H84460Z3
Type	Button Head	Button Head	Button Head

## Flush Type Couplers

Flush type couplers are specifically designed for flush type fittings. The rounded end of the coupler mates with the fitting to provide proper engagement when servicing.

Part illustrations are not shown at actual size.

## Button Head Adapter

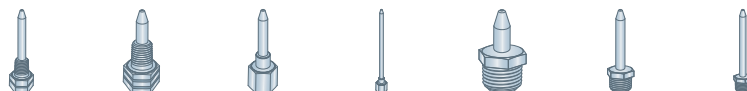


Male	7/16-27 UNS	
Female	1/8"-27 NPT	3/8"-27 NPT
Part #	H85000	H85050

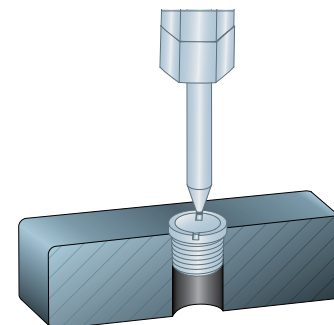
## Needle Couplers

Needle couplers allow for dispensing a fine line of grease which is beneficial when the greasing point is hard to reach, for example, a U-joint. Threads are designed to fit onto a grease gun rigid extension or whip hose.

Part illustrations are not shown at actual size.



	1/8"-27 NPTF Female				1/8"-27 NPTF Male		
Part #	H85100	H85102	H85104	H85106	H85105	H85110	H85115
Length	1.500" (1-1/2)	.593" (19/32)	1.375" (1-3/8)	6.000"	.812" (13/16)	2.250" (2-1/4)	4.500" (4-1/2)

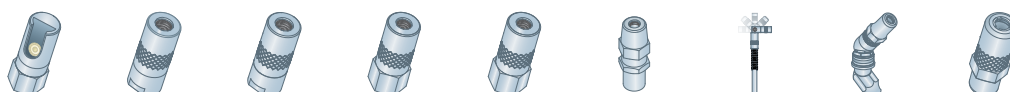


Needle couplers are designed for lubricating flush type fittings.

## Hydraulic Couplers

Hydraulic coupler jaws are heat treated and fully hardened spring steel to ensure a tight fit through extended use. Internal ball checks prevent back pressure from reaching the gun.

Part illustrations are not shown at actual size.










	1/8"-27 NPTF	1/8"-27 NPT							M10 x 1.00
Part #	H84001	H84000	H84020	H84030	H84050	H84075	H84100	H84150	H84025Z3









## Quick Connect Couplers

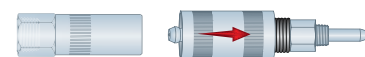
Quick connect couplers are an effective way to bring versatility to grease guns. When multiple types of greasing tools are required for scheduled maintenance, quick connect couplers allow for fast and easy changing of tools to ensure proper lubrication of grease fittings.

*Part illustrations are not shown at actual size.*

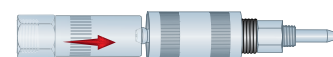
							
Part #	H84080	H84085	H84090	H84095	H84480	H84600	H84625
Tip	Hydraulic	Hydraulic	Hydraulic	Hydraulic	Button Head	Push Type	Push Type
Angle	15°	—	90°	90°	90°	—	90°

						
Part #	H85120	H85130	H85140	H85145	H85165	H85200
Tip	Needle Nozzle	Needle Nozzle	Needle Nozzle	Needle Nozzle	Rubber Tip	Injector Needle
Length	.875" (7/8)	.593" (19/32)	4.000"	1.500" (1-1/2)	1.406" (1-13/32)	1.500" (1-1/2)

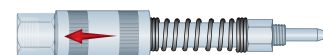
### Design Feature



Retract the sleeve of the quick connect coupler.



Attach the quick connect coupler to the hydraulic coupler of your grease gun.

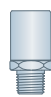
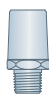
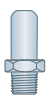


Release the quick connect coupler sleeve to secure connection.

## Loaders

Grease gun bulk loader fittings for light to medium, and heavy weight lubricants. These bulk loader fittings fit grease guns with a 1/8"-27 NPTF port in the head. Installation is easy, simply remove plug and install.



*Part illustrations are not shown at actual size.*

		
1/8"-27 NPT		
H86000	H86020	H86040
.480" Straight	.580" Taper	.340" Straight

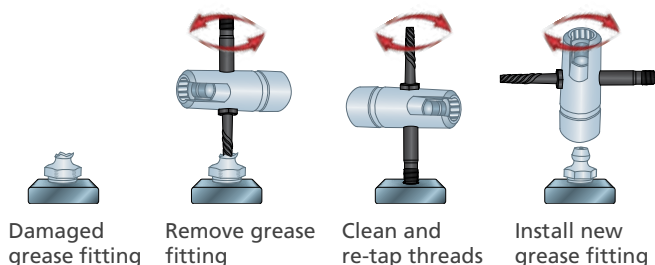
## Multi Tools

Grease fitting multi-tools combine four tools in one compact design: an easy-out to remove broken or damaged fittings, a hardened tap to repair damaged threads, a socket wrench for installation of the most common sizes of straight fittings, and a slotted socket for installing common sizes of angled fittings. These compact tools are a great addition to any toolbox.

*Part illustrations are not shown at actual size.*

	
H83000	H83050
1/8"-27 NPTF	1/4"-28 SAE-LT

### How It Works



## Fitting Unblocker Tool

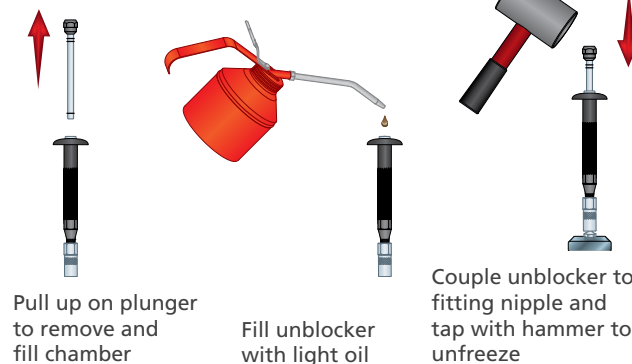
This precision tool is specially engineered to quickly and easily unplug stubborn grease fittings. To operate, a light weight oil is injected into the tool's reservoir. The plunger is then inserted, and a tap from a hammer injects the oil into the fitting, loosening the internal components.

*Part illustrations are not shown at actual size.*



H83300

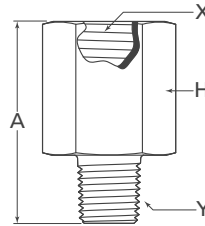
### How It Works



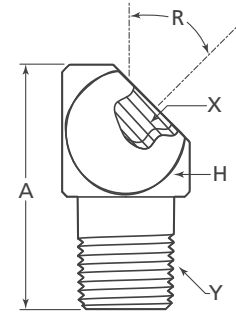
## Extensions, Elbows, & Adapter

Elbows are angled connectors used to plumb and make turns around obstructions. They usually have a male and female end. Extensions and elbows, unlike adapters, maintain the same thread diameter and thread series on both ends.

*Part illustrations are not shown at actual size*



A Overall Length  
H Hex  
R Angle  
X Female Thread  
Y Male Thread



### PTF – Elbow

*Am. Std. Pipe Thread*



	1/8"-27
Zinc Clear	H316071
A	.820"
H	.500" (1/2)
X	1/8"-27
Y	1/8"-27
R	90°

### NPTF – Extensions & Elbows

*National Pipe Thread Fuel*



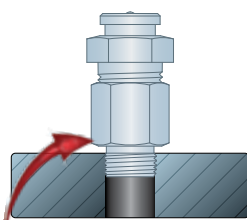
	1/4"-18	1/8"-27						
Zinc Clear	H43748	H13129	H43706	H43761	H43762	H43763	H43716Z3	H44701Z3
A	1.340"	1.500" (1-1/2)	1.130"	.750" (3/4)	1.250" (1-1/4)	.940"	1.000"	1.000"
H	.687" (11/16)	.625" (5/8)	.500" (1/2)	.500" (1/2)	.500" (1/2)	.562" (9/16)	.500" (1/2)	.500" (1/2)
X	1/4"-18	1/8"-27	1/8"-27	1/8"-27	1/8"-27	1/8"-27	1/8"-27	1/8"-27
Y	1/4"-18	1/8"-27	1/8"-27	1/8"-27	1/8"-27	1/8"-27	1/8"-27	1/8"-27
R	90°	90°	90°	—	—	—	45°	90°

### NPTF – Adapters

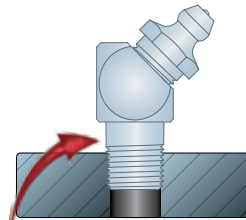
*National Pipe Thread Fuel*



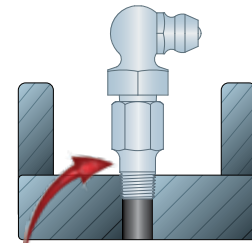
Female	1/4"-18 NPTF	1/8"-27 NPTF					
Male	1/8"-27 NPTF	1/4"-18 NPTF	1/4"-28 SAE-LT			7/16"-27 UNS	
Zinc Clear	H43760	H43718	H310912	H51942	H51943	HA51942Z3	H305859
A	1.190"	1.190"	.810"	.750" (3/4)	.810"	.870"	.780"
H	.625" (5/8)	.562" (9/16)	.500" (1/2)	.500" (1/2)	.500" (1/2)	.500" (1/2)	.562" (9/16)
X	1/4"-18	1/8"-27	1/8"-27	1/8"-27	1/8"-27	1/8"-27	1/8"-27
Y	1/8"-27	1/4"-18	1/4"-28	1/4"-28	1/4"-28	1/4"-28	7/16"-27
R	—	90°	45°	—	90°	—	—



Adapters feature two different thread pitches and are used to connect dissimilar threads.



An elbow is a connecting part that is installed to allow a change of direction for easier access to the lubrication point.

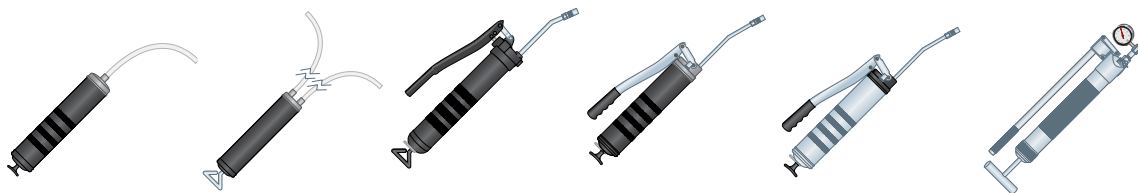


This part is used to extend a grease fitting to a more accessible service area using the same thread pitch.

## Grease Guns

Heritage Industrial has a wide range of suction, lever, pistol-grip, and pneumatic grease guns suitable for applications of all kinds. Suction and lever guns require two hands to operate while only one hand is required to operate pistol-grip and pneumatic. Pneumatic grease guns are trigger operated, portable, and convenient.

*Part illustrations are not shown at actual size.*



	Suction		Lever			
Part #	H81400	H81405	H81000	H81100	H81600	H81650
PSI	—	—	6,000 PSI	10,000 PSI	10,000 PSI	15,000 PSI
Capacity	16 oz.	12 oz.	14 oz./16 oz.	14 oz./16 oz.	14 oz./16 oz.	12 oz.



	Pistol-Grip				Pneumatic
Part #	H81300	H81050	H81150	H81145	H81200
PSI	3,500 PSI	5,000 PSI	5,000 PSI	7,500 PSI	4,800 PSI
Capacity	3 oz./4 oz.	14 oz./16 oz.	14 oz./16 oz.	14 oz./16 oz.	14 oz./16 oz.

## Grease Hoses

Made of thermoplastic construction with a 9/64" ID and 21/64" OD, these hoses are suitable for hand operated grease guns. Please note: never use a grease hose at a pressure above the recommended working PSI.

*Custom lengths are available.*

*Part illustrations are not shown at actual size.*

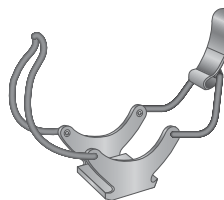


	1/8"-27 NPTF				
Part #	H82008	H82012	H82018	H82512	H82518
Working PSI	3,000 PSI	3,000 PSI	3,000 PSI	5,800 PSI	5,800 PSI
Burst PSI	11,600 PSI	11,600 PSI	11,600 PSI	13,775 PSI	13,775 PSI
Length	8.000"	12.000"	18.000"	12.000"	18.000"

## Grease Gun Holder

Mounts to rigid surface near service location to improve efficiency.

*Part illustration is not shown at actual size.*



H86250

## Grease Gun Light

LED light with batteries and mounting clamp for grease gun steel extension or hose.

*Part illustration is not shown at actual size.*



HLED55015B

# HUYETT.COM

SEARCH ■ ORDER ■ TRACK



## FAST & EASY

Real Time Access to Order Details 24/7



### Order Status

Know if your order is processing, complete, or partially shipped.



### Order Tracking

Track your order by clicking on the tracking number in order details.



### Expected Ship Date

See the expected ship date if an item is back ordered.



### Customer Specific Pricing

Login today for great prices on high quality fasteners.



### Quantity Breaks

Stock up on frequently used parts to save time and money.



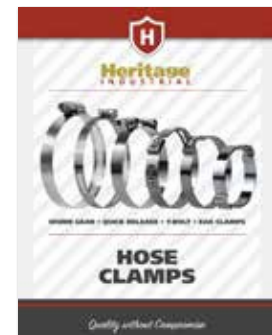
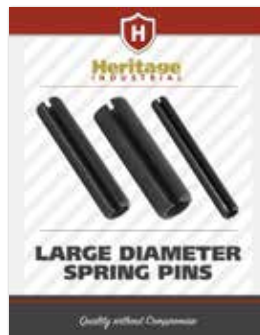
### Free Material, Compliance, & RoHS/REACH Certifications\*

Online. All the time. Download today.

\* Some Exclusions Apply



## FIND THESE AND OTHER HERITAGE INDUSTRIAL PRODUCT LINES ON HUYETT.COM



For more information, to request a quote,  
or to place an order:  
785-392-3017 • sales@huyett.com

Distributed by



www.huyett.com